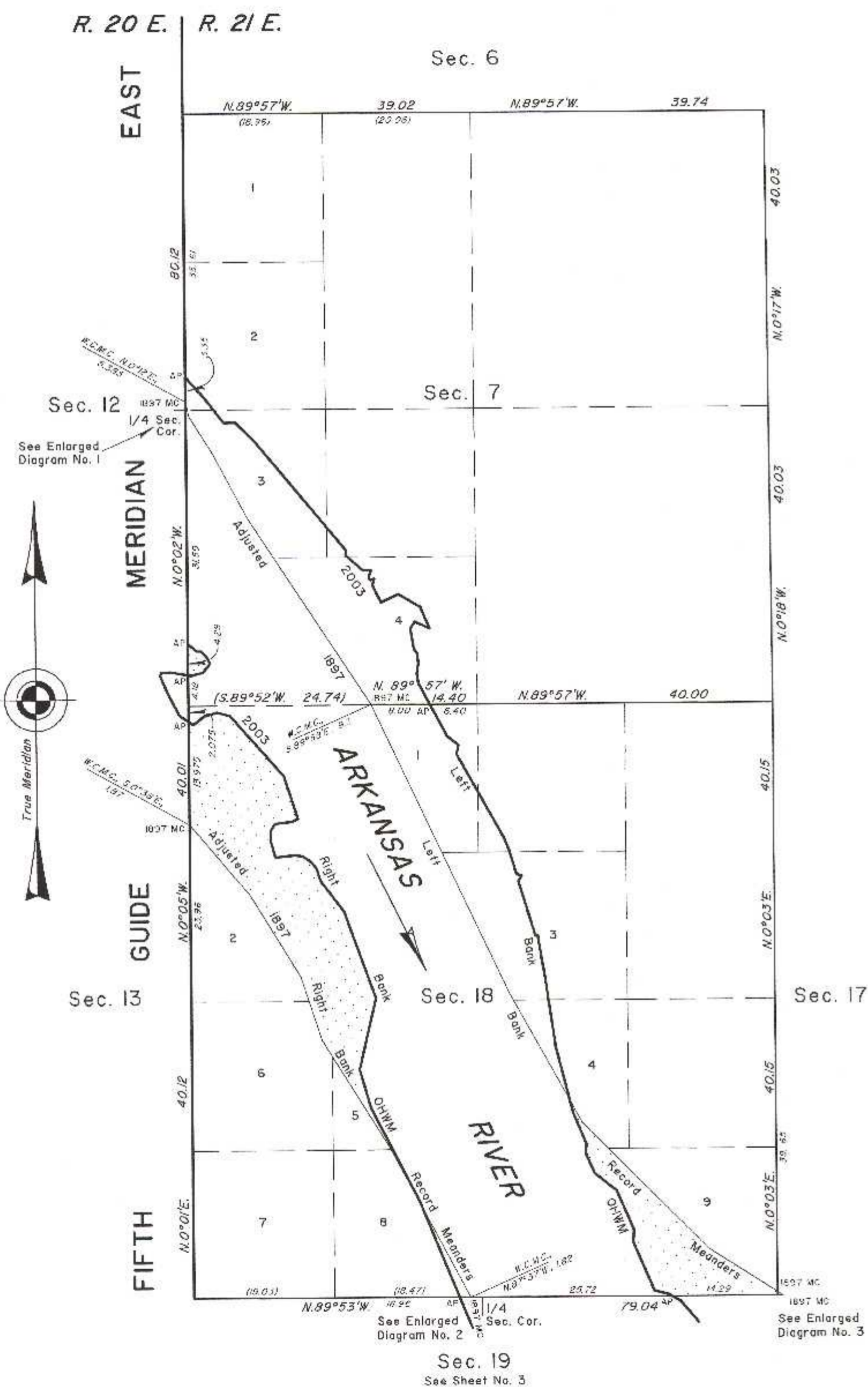


TOWNSHIP 12 NORTH, RANGE 21 EAST, OF THE INDIAN MERIDIAN, OKLAHOMA
DEPENDENT RESURVEY AND SURVEY



2003 Arkansas River in Section 7
Right Bank OHWM as Digitized

From AP, sections 7 and 12, at 2003 Right Bank OHWM, thence upstream in section 7:

S.79°13'E.	0.40
N.74°18'E.	1.74
N.38°07'E.	1.51
N.28°30'W.	0.98
N.43°23'W.	1.12
N.69°19'W.	0.58
N.49°13'W.	1.575

AP sections 7 and 12

2003 Arkansas River in Section 7
Left Bank OHWM as Digitized

From AP, sections 7 and 18, at 2003 Left Bank OHWM, thence upstream in section 7:

N.27°59'W.	3.14
N.11°03'W.	1.39
N.10°14'E.	1.42
N. 7°05'W.	1.30
N.34°18'W.	0.80
N. 9°16'W.	2.8
N.35°18'E.	1.12
S.65°45'E.	2.15
N.23°29'W.	3.13
N.58°46'W.	3.43
S.64°48'W.	2.59
N.26°06'W.	2.59
N.14°46'E.	0.87
S.75°35'W.	0.56
N.26°06'W.	0.40
N.19°32'E.	1.03
N.69°33'W.	1.13
N.48°39'W.	3.07
N. 2°4'E.	0.71
N.39°40'W.	19.25
N.45°30'W.	3.67
S.88°01'W.	1.52
N.37°46'W.	4.20
N.42°01'W.	3.845

AP sections 7 and 12

2003 Arkansas River in Section 18
Right Bank OHWM as Digitized

From AP, sections 18 and 19, at 2003 Right Bank OHWM, thence upstream in section 18:

N.22°10'W.	13.23
Adj. 1897 R.B. Meander	
N.22°10'W.	1.00
N.27°08'W.	14.05
N.5°42'W.	5.39
N.13°21'E.	9.92
N.19°40'W.	12.48
N.37°11'W.	5.31
N.16°10'W.	1.63
N.37°34'W.	1.20
N.56°21'W.	1.41
N.82°20'W.	1.10
S.83°18'W.	2.63
N.15°30'W.	2.29
N. 2°27'W.	1.35
N.32°57'E.	1.24
N.83°23'E.	2.34
N.66°23'E.	0.84
N.17°52'W.	6.07
N.41°22'W.	10.96
N.74°16'W.	1.80
S.73°56'W.	1.85
S.51°24'W.	1.86
N.53°54'W.	0.782

AP sections 18 and 19

2003 Arkansas River in Section 18
Left Bank OHWM as Digitized

From AP, sections 18 and 19, at 2003 Left Bank OHWM, thence upstream in section 18:

N.60°40'W.	0.478
N.74°42'W.	2.01
N.23°03'W.	7.11
N. 2°24'E.	1.66
N.23°07'W.	5.86
N.51°33'W.	3.76
N.23°22'W.	2.97
N. 7°10'E.	1.17
N.22°47'W.	4.70
N.14°19'W.	1.768
Adj. 1897 L.B. Meander	
N.14°19'W.	7.392
N. 8°05'W.	8.80
N. 9°29'W.	6.50
S.87°15'W.	0.31
N.16°43'W.	7.72
N.30°57'E.	0.89
N.77°56'W.	0.74
N.16°46'W.	3.50
N.22°51'W.	1.90
N.29°01'W.	12.75
N.10°03'E.	1.30
N.51°02'W.	1.93
N.27°59'W.	4.93

AP sections 7 and 18

Adjusted 1897 Right Bank Record Meanders

From the 1897 MC, sections 18 and 19 thence:

N.27°57'W.	6.77
Historic Bank	
N.27°57'W.	7.106
2003 Right Bank OHWM	
N.27°57'W.	9.184
N.31°56'W.	17.04
N.17°59'W.	9.02
N.31°26'W.	13.03
N.40°10'W.	12.58

1897 MC Secs. 18 and 19

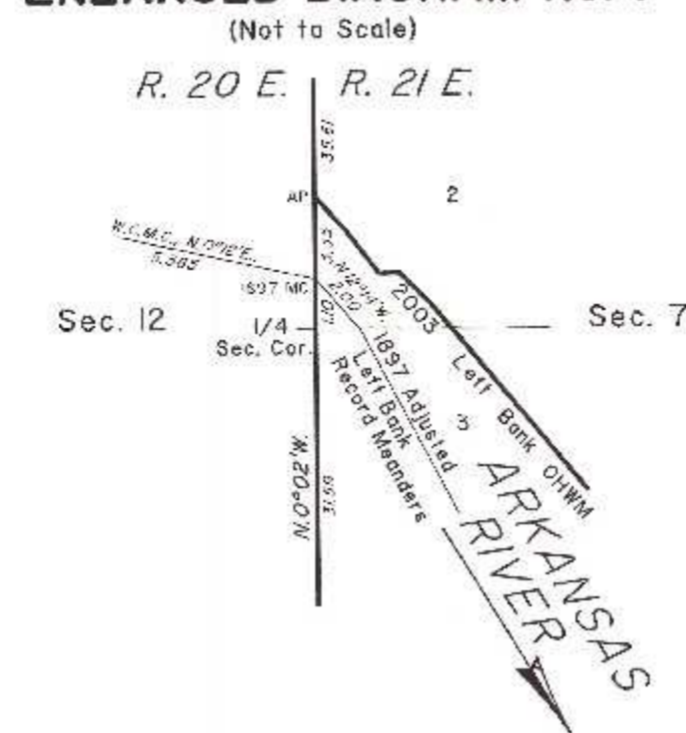
Adjusted 1897 Left Bank Record Meanders

From the 1897 MC, sections 17 and 20 thence:

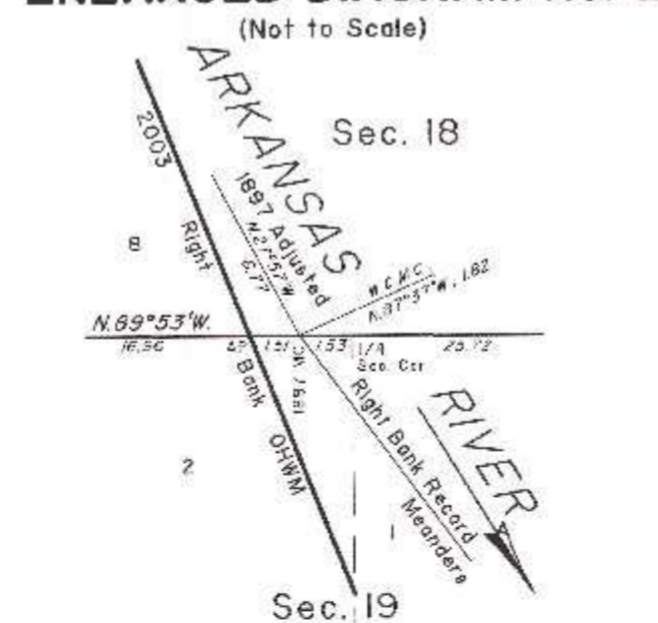
N.54°24'W.	0.96
1897 MC Secs. 17 and 18	
N.57°21'W.	11.02
N.44°38'W.	24.06
N.28°56'W.	3.527
2003 Left Bank OHWM	
N.28°56'W.	1.393
Historic Bank	
N.28°56'W.	15.15
N.25°12'W.	43.34
1897 MC Secs. 7 and 18	
N.33°11'W.	30.09
N.27°42'W.	10.03
N.32°11'W.	6.02
N.12°14'W.	2.00

1897 MC Secs. 7 and 12

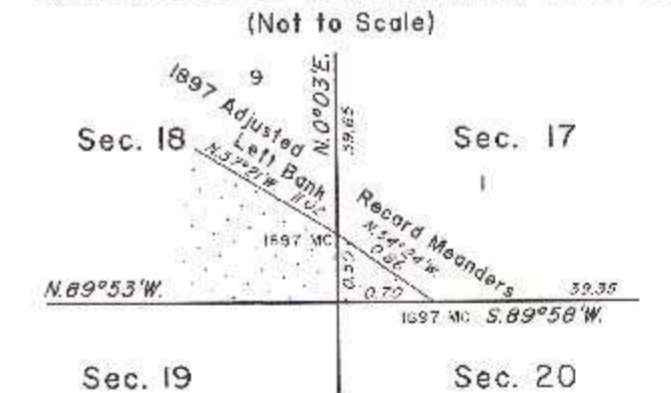
ENLARGED DIAGRAM No. 1



ENLARGED DIAGRAM No. 2



ENLARGED DIAGRAM No. 3



Reference should be made to sheet No. 1 for survey and disclaimer information.

UNITED STATES DEPARTMENT OF THE INTERIOR
BUREAU OF LAND MANAGEMENT

Sante Fe, New Mexico September 30, 2011

This plat is strictly conformable to the approved field notes, and the survey, having been correctly executed in accordance with the requirements of law and the regulations of this Bureau, is hereby accepted.

For the Director

Chief Cadastral Surveyor for New Mexico

2003 Arkansas Riverbed in Section 7

Claim Area ±86.43 Acres

1897 Arkansas Riverbed Claim Area ±0.83 Acres

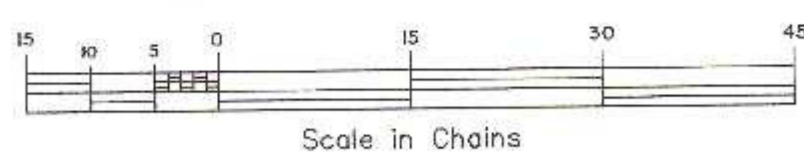
2003 Arkansas Riverbed in Section 18

Claim Area ±212.51 Acres

1897 Arkansas Riverbed Claim Area ±65.39 Acres

1897 Arkansas Riverbed in Section 17

Claim Area ±0.01 Acres



1897 Riverbed Claim Area