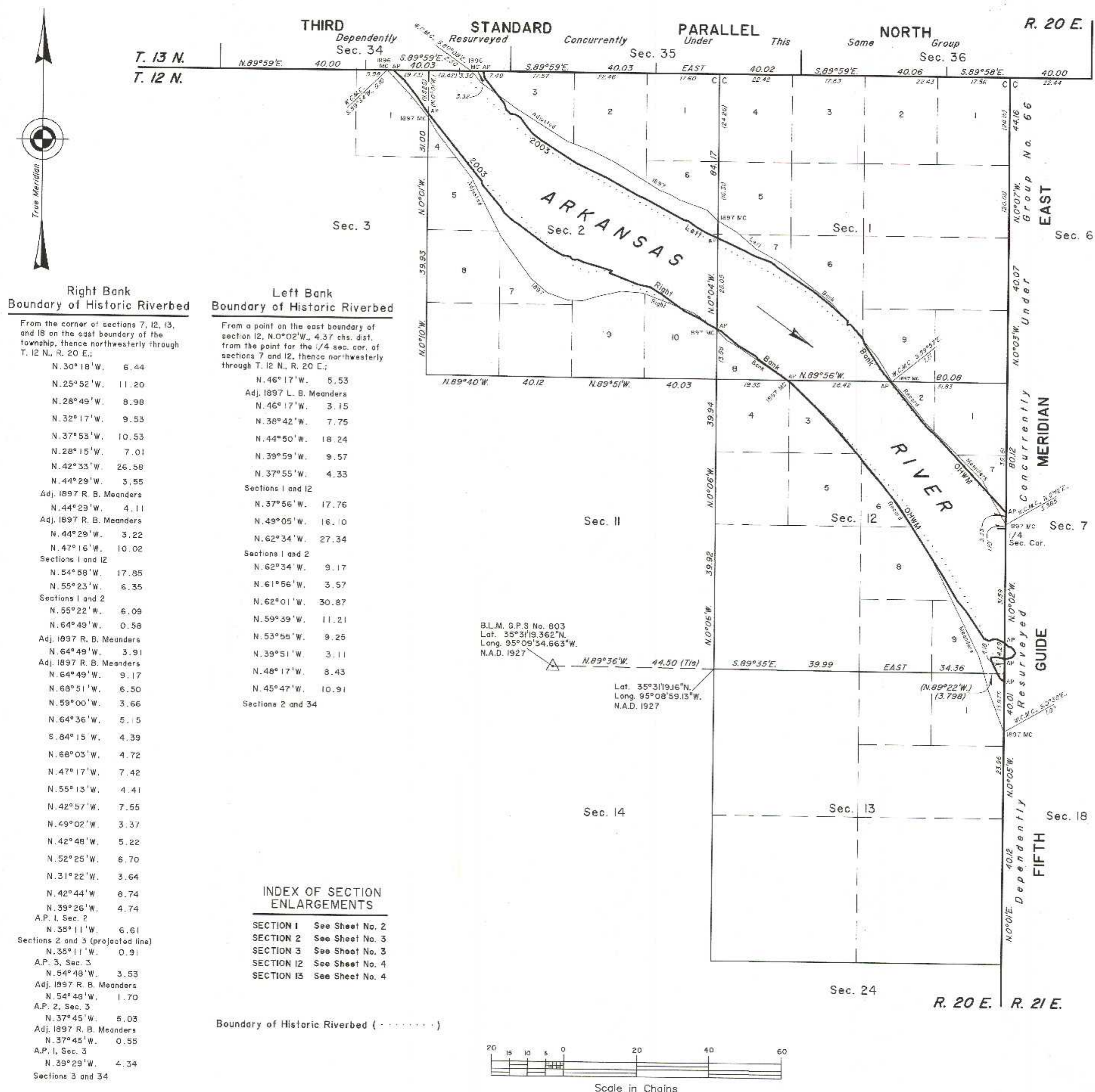


TOWNSHIP 12 NORTH, RANGE 20 EAST, OF THE INDIAN MERIDIAN, OKLAHOMA
DEPENDENT RESURVEY AND SURVEY



Right Bank Boundary of Historic Riverbed

From the corner of sections 7, 12, 13, and 18 on the east boundary of the township, thence northwesterly through T. 12 N., R. 20 E.:

N. 30° 18' W.	6.44
N. 25° 52' W.	11.20
N. 28° 49' W.	8.98
N. 32° 17' W.	9.53
N. 37° 53' W.	10.53
N. 28° 15' W.	7.01
N. 42° 33' W.	26.58
N. 44° 29' W.	3.55
Adj. 1897 R. B. Meanders	
N. 44° 29' W.	4.11
Adj. 1897 R. B. Meanders	
N. 44° 29' W.	3.22
N. 47° 16' W.	10.02
Sections 1 and 12	
N. 54° 58' W.	17.85
N. 55° 23' W.	6.35
Sections 1 and 2	
N. 55° 22' W.	6.09
N. 64° 49' W.	0.58
Adj. 1897 R. B. Meanders	
N. 64° 49' W.	3.91
Adj. 1897 R. B. Meanders	
N. 64° 49' W.	9.17
N. 68° 51' W.	6.50
N. 59° 00' W.	3.66
N. 64° 36' W.	5.15
S. 84° 15' W.	4.39
N. 68° 03' W.	4.72
N. 47° 17' W.	7.42
N. 55° 13' W.	4.41
N. 42° 57' W.	7.55
N. 49° 02' W.	3.37
N. 42° 48' W.	5.22
N. 52° 25' W.	6.70
N. 31° 22' W.	3.64
N. 42° 44' W.	8.74
N. 39° 26' W.	4.74
A.P. 1, Sec. 2	
N. 35° 11' W.	6.61
Sections 2 and 3 (projected line)	
N. 35° 11' W.	0.91
A.P. 3, Sec. 3	
N. 54° 48' W.	3.53
Adj. 1897 R. B. Meanders	
N. 54° 48' W.	1.70
A.P. 2, Sec. 3	
N. 37° 45' W.	5.03
Adj. 1897 R. B. Meanders	
N. 37° 45' W.	0.55
A.P. 1, Sec. 3	
N. 39° 29' W.	4.34
Sections 3 and 34	

Left Bank Boundary of Historic Riverbed

From a point on the east boundary of section 12, N. 0° 02' W., 4.37 chs. dist. from the point for the 1/4 sec. cor. of sections 7 and 12, thence northwesterly through T. 12 N., R. 20 E.:

N. 46° 17' W.	5.53
Adj. 1897 L. B. Meanders	
N. 46° 17' W.	3.15
N. 38° 42' W.	7.75
N. 44° 50' W.	18.24
N. 39° 59' W.	9.57
N. 37° 55' W.	4.33
Sections 1 and 12	
N. 37° 56' W.	17.76
N. 49° 05' W.	16.10
N. 62° 34' W.	27.34
Sections 1 and 2	
N. 62° 34' W.	9.17
N. 61° 56' W.	3.57
N. 62° 01' W.	30.87
N. 59° 39' W.	11.21
N. 53° 55' W.	9.25
N. 39° 51' W.	3.11
N. 48° 17' W.	8.43
N. 45° 47' W.	10.91
Sections 2 and 34	

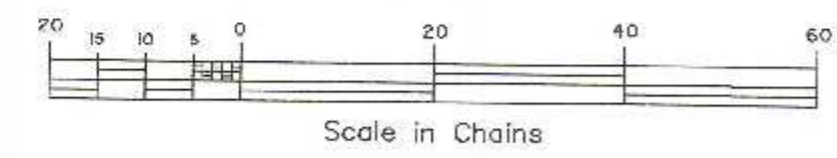
INDEX OF SECTION ENLARGEMENTS

SECTION 1	See Sheet No. 2
SECTION 2	See Sheet No. 3
SECTION 3	See Sheet No. 3
SECTION 12	See Sheet No. 4
SECTION 13	See Sheet No. 4

Boundary of Historic Riverbed (- - - - -)

B.L.M. G.P.S. No. 803
 Lat. 35° 31' 19.362" N.
 Long. 95° 09' 34.663" W.
 N.A.D. 1927

Lat. 35° 31' 19.16" N.
 Long. 95° 08' 59.13" W.
 N.A.D. 1927



A history of surveys and additional information are contained in the field notes.

This plat, in four sheets, represents the dependent resurvey of a portion of the subdivisional lines and the adjusted record meanders of the 1897 right and left banks of the Arkansas River, designed to restore the corners in their true original locations according to the best available evidence, the informative traverse of the 2003 right and left banks ordinary high water mark (OHWM) of the Arkansas River, as digitized from aerial photography (identifying said riverbed as instructed by Public Law No. 107-331, enacted December 13, 2002), and the informative survey of the boundary of the historic riverbed of the Arkansas River and the calculated acreages of the Arkansas Riverbed, Township 12 North, Range 20 East, Indian Meridian, Oklahoma.

Except as indicated hereon, the lottings and areas are as shown on the plat approved October 31, 1898. Bearings and distances depicted in parenthesis on certain lines represent calculated data. The intersections of the 2003 digitized banks with surveyed lines were not verified by a field survey.

Survey executed by Mark L. Bush and Gilbert V. Olson, Supervisory Cadastral Surveyors, beginning August 6, 1990 and completed August 24, 1994, pursuant to Special Instructions dated July 23, 1990, for Group No. 67, Oklahoma.

SETTLEMENT ACT

The Settlement Act of January 23, 2002, set forth in Public Law No. 107-331, dated December 13, 2002, defines in Sections 602 (17), 604 (2),(4)and(6) and 605 of said act, the Indian Nations claim to certain riverbed and wetbed lands. Further defined, said Section 602 (17), provides that "... each Indian Nation expressly reserved all of its beneficial interest and title to all other Riverbed lands, including minerals", pursuant to United States Supreme Court decision 397 U.S. 620 (1970), "and further reserved any and all right, title, or interest that each nation may have in and to the water flowing in the Arkansas River and its tributaries." The status of lands are as defined in said act.

UNITED STATES DEPARTMENT OF THE INTERIOR
BUREAU OF LAND MANAGEMENT

Santa Fe, New Mexico September 30, 2011

This plat is strictly conformable to the approved field notes, and the survey, having been correctly executed in accordance with the requirements of law and the regulations of this Bureau, is hereby accepted.

For the Director

Chief Cadastral Surveyor for New Mexico