

TOWNSHIP 13 NORTH, RANGE 20 EAST, OF THE INDIAN MERIDIAN, OKLAHOMA

DEPENDENT RESURVEY AND SURVEY

INDEX OF SECTION ENLARGEMENTS

SECTION 15	See Sheet No. 4	SECTION 22	See Sheet No. 5
SECTION 16	See Sheet No. 4	SECTION 27	See Sheet No. 5
SECTION 17	See Sheet No. 3	SECTION 28	See Sheet No. 5
SECTION 18	See Sheet No. 2	SECTION 33	See Sheet No. 6
SECTION 19	See Sheet No. 2	SECTION 34	See Sheet No. 6
SECTION 20	See Sheet No. 3		

A history of surveys and additional information are contained in the field notes.

This plat, in seven sheets, represents the dependent resurvey of a portion of the Third Standard Parallel North (south boundary), a portion of the west boundary, a portion of the subdivisional lines, and the adjusted record meanders of the 1896 right and left banks of the Arkansas River, designed to restore the corners in their true original locations according to the best available evidence, the informative traverse of the 2003 right and left banks ordinary high water mark (OHWM) of the Arkansas River, as digitized from aerial photography (identifying said riverbed as instructed by Public Law No. 107-331, enacted December 13, 2002), and the informative survey of the boundary of the historic riverbed of the Arkansas River and the calculated acreages of the Arkansas Riverbed, Township 13 North, Range 20 East, Indian Meridian, Oklahoma.

Except as indicated hereon, the lottings and areas are as shown on the plat approved July 11, 1898.

Bearings and distances depicted in parenthesis on certain lines represent calculated data. The intersections of the 2003 digitized banks with surveyed lines were not verified by a field survey.

Survey executed by Mark L. Bush and Gilbert V. Olson, Supervisory Cadastral Surveyors, beginning July 31, 1990 and completed January 18, 1994, pursuant to Special Instructions dated July 23, 1990, for Group No. 67, Oklahoma.

SETTLEMENT ACT

The Settlement Act of January 23, 2002, set forth in Public Law No. 107-331, dated December 13, 2002, defines in Sections 602 (17), 604 (2),(4) and (6) and 605 of said act, the Indian Nations claim to certain riverbed and wetbed lands. Further defined, said Section 602 (17), provides that "... each Indian Nation expressly reserved all of its beneficial interest and title to all other Riverbed lands, including minerals", pursuant to United States Supreme Court decision 397 U.S. 620 (1970), "and further reserved any and all right, title, or interest that each nation may have in and to the water flowing in the Arkansas River and its tributaries." The status of lands are as defined in said act.

UNITED STATES DEPARTMENT OF THE INTERIOR
BUREAU OF LAND MANAGEMENT

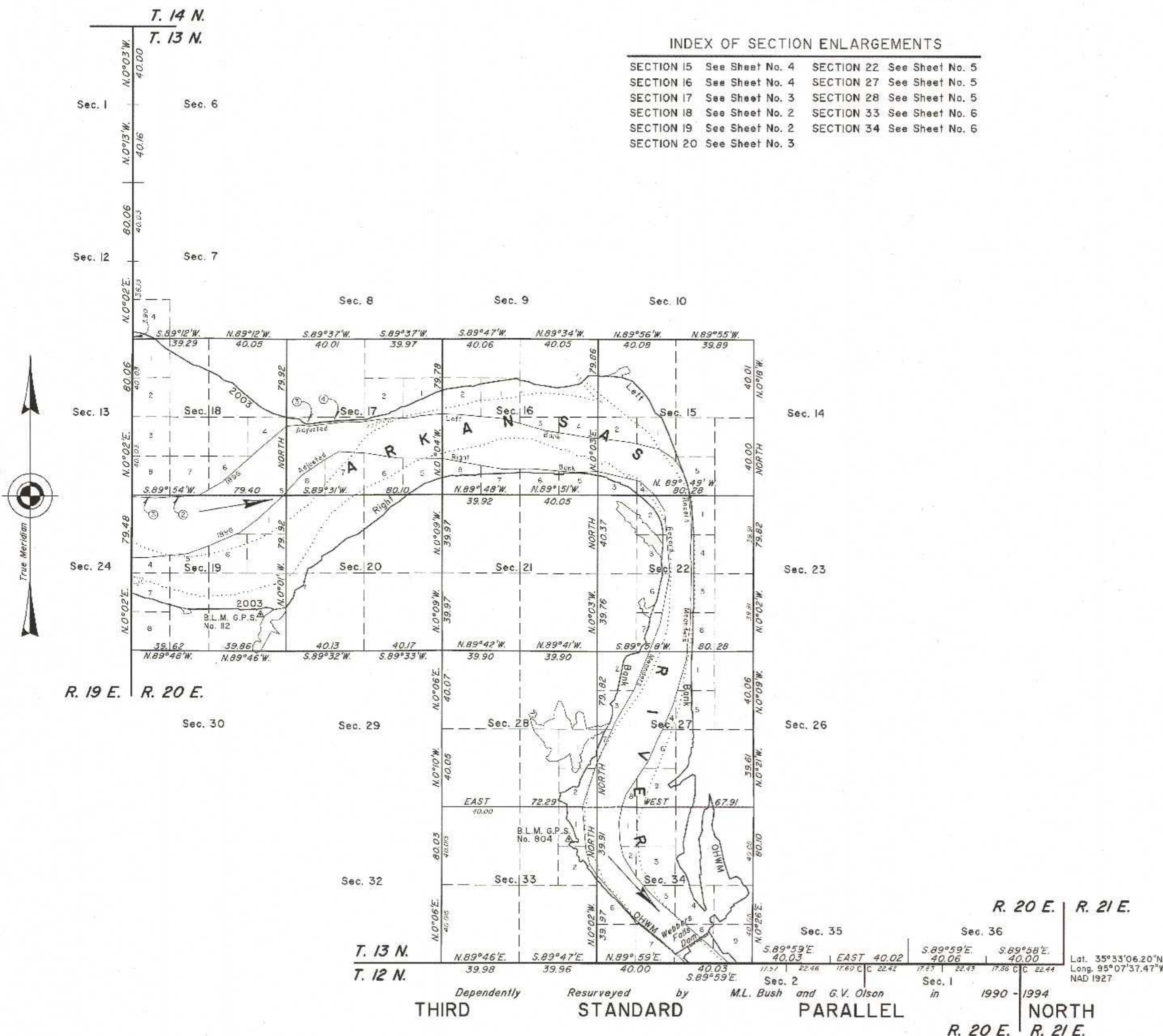
Santa Fe, New Mexico December 14, 2011

This plat is strictly conformable to the approved field notes, and the survey, having been correctly executed in accordance with the requirements of law and the regulations of this Bureau, is hereby accepted.

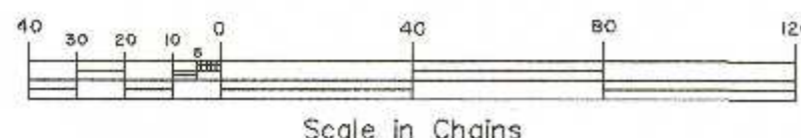
For the Director

John A. Casiano

Chief Cadastral Surveyor for New Mexico



Boundary of Historic Riverbed (---) See Sheet No. 7 for Table of Historic Riverbed



Lat. 35°33'06.20"N
Long. 95°07'37.47"W
NAD 1927

THIRD STANDARD PARALLEL NORTH
R. 20 E. R. 21 E.