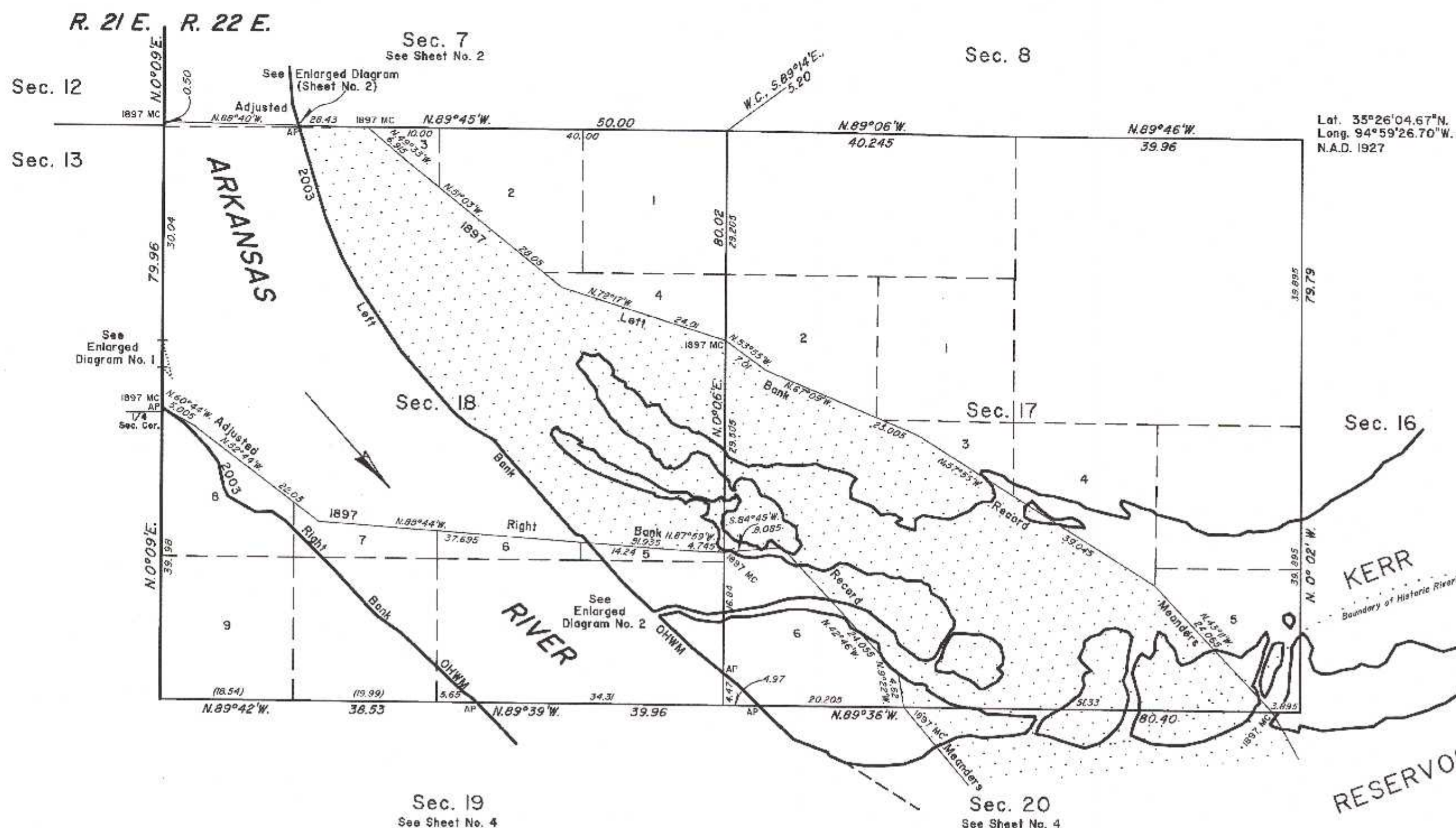


TOWNSHIP II NORTH, RANGE 22 EAST, OF THE INDIAN MERIDIAN, OKLAHOMA
DEPENDENT RESURVEY AND SURVEY



2003 Arkansas River in Section 17
Left Bank OHWM as Digitized
From AP, sections 17 and 20,
at 2003 Left Bank OHWM,
thence upstream in section 17;
N.45°25'W. 3.89
N.50°51'W. 2.82
AP sections 17 and 18

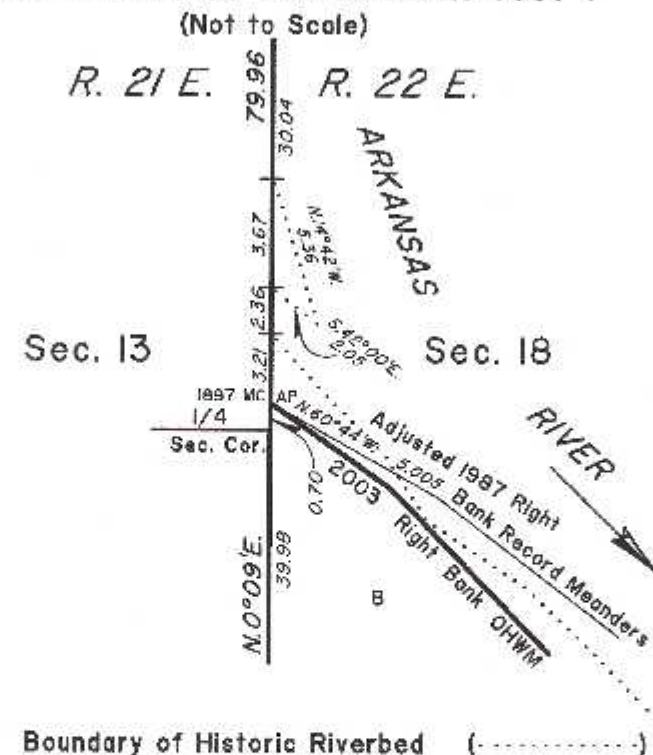
2003 Arkansas River in Section 18
Left Bank OHWM as Digitized
From AP, sections 17 and 18,
at 2003 Left Bank OHWM,
thence upstream in section 18;
N.50°51'W. 5.47
N.47°07'W. 13.20
N.4°32'W. 7.51

2003 Arkansas River in Section 18
Right Bank OHWM as Digitized
From AP, sections 18 and 19,
at 2003 Right Bank OHWM,
thence upstream in section 18;
N.44°15'W. 0.76
N.56°17'W. 1.67
N.46°37'W. 11.79

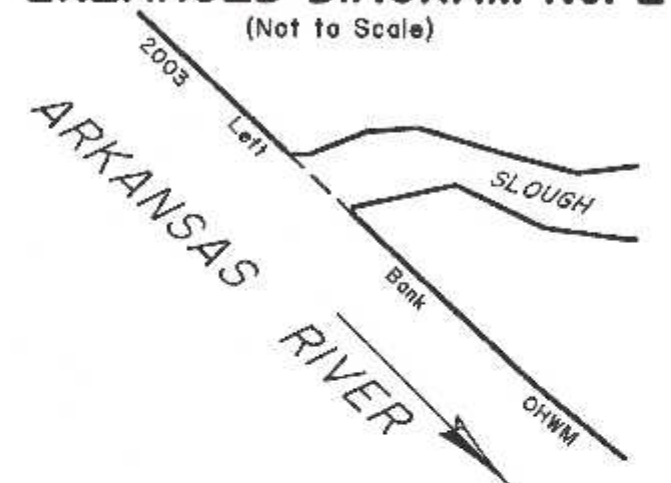
Adj. 1897 R.B. Meander
N.4°32'W. 1.21
N.74°37'W. 1.02
N.4°27'W. 14.25
N.39°55'W. 3.14
N.60°12'W. 3.91
N.49°14'W. 2.81
N.4°38'W. 3.53
N.4°03'W. 7.83
N.33°52'W. 10.98
N.29°01'W. 4.49
N.22°27'W. 6.00
N.16°34'W. 13.13
AP Calculated Section Line sections 7 and 18

N.54°51'W. 4.44
N.42°55'W. 8.69
N.45°20'W. 9.46
N.55°47'W. 2.34
S.87°48'W. 2.20
N.6°06'W. 4.47
N.26°02'W. 1.38
N.12°06'W. 3.54
N.36°06'W. 2.71
N.44°04'W. 4.55
N.54°54'W. 3.85
AP sections 13 and 18

ENLARGED DIAGRAM No. 1
(Not to Scale)



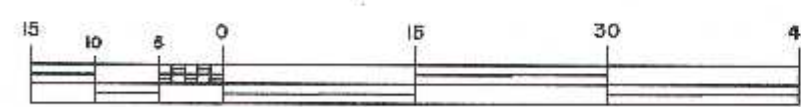
ENLARGED DIAGRAM No. 2
(Not to Scale)



1897 Riverbed Claim Area

2003 Arkansas Riverbed in Section 18
Claim Area ±269.09 Acres
1897 Arkansas Riverbed Claim Area ±165.02 Acres

2003 Arkansas Riverbed in Section 17
Claim Area ±1.16 Acres
1897 Arkansas Riverbed Claim Area ±184.09 Acres



Scale in Chains

Reference should be made to sheet No. 1 for survey and disclaimer information.

UNITED STATES DEPARTMENT OF THE INTERIOR
BUREAU OF LAND MANAGEMENT

Sante Fe, New Mexico

July 22, 2011

This plat is strictly conformable to the approved field notes, and the survey, having been correctly executed in accordance with the requirements of law and the regulations of this Bureau, is hereby accepted.

For the Director

Robert A. Casiday

Chief Cadastral Surveyor for New Mexico