

TOWNSHIP II NORTH, RANGE 22 EAST, OF THE INDIAN MERIDIAN, OKLAHOMA
DEPENDENT RESURVEY AND SURVEY

2003 Arkansas River in Section 20 Left Bank OHWM as Digitized	2003 Arkansas River in Section 20 Right Bank OHWM as Digitized	2003 Arkansas River in Section 19 Right Bank OHWM as Digitized
From AP, sections 20 and 21, at 2003 Left Bank OHWM, thence upstream in section 20;	From AP, sections 20 and 21, at 2003 Right Bank OHWM, thence upstream in section 20;	From AP, sections 19 and 20, at 2003 Right Bank OHWM, thence upstream in section 19;
S.50°59'W. 2.22	N.51°39'W. 2.40	S.67°00'W. 1.95
S.68°55'W. 1.90	S.81°50'W. 0.66	N.42°12'W. 6.73
N.72°39'W. 2.17	N.51°58'W. 1.10	N.44°32'W. 2.70
N.57°24'W. 1.10	N.89°24'W. 0.96	N. 7°39'W. 4.08
S.73°12'W. 2.55	Adj. 1897 R.B. Meander	N.51°27'W. 5.35
S.77°36'W. 2.33	N.89°24'W. 0.76	N.52°01'W. 6.55
S.65°54'W. 1.45	N.74°32'W. 1.84	N.77°14'W. 1.47
N.57°24'W. 2.20	N.78°58'W. 2.62	N.35°05'W. 2.97
N.89°32'W. 2.82	N.53°52'W. 5.06	N. 6°14'W. 1.04
S.88°55'W. 1.22	N.51°19'W. 2.59	N.32°05'W. 5.27
N.78°49'W. 1.79	N.45°11'W. 4.27	N.27°15'W. 10.50
N.77°51'W. 2.66	N.37°22'W. 1.58	N.44°15'W. 7.94
N.70°32'W. 2.60	N.51°48'W. 1.70	AP sections 18 and 19
N.62°47'W. 2.25	N.25°16'W. 1.10	
N.65°23'W. 2.28	N.65°46'W. 1.44	
N.49°54'W. 1.62	N.82°02'W. 1.49	
N.31°10'W. 1.67	N.75°10'W. 2.77	
N.37°37'W. 2.56	N.80°04'W. 2.73	
N.74°42'W. 2.70	S.87°33'W. 2.33	
N.73°59'W. 1.13	N.87°53'W. 3.45	
Adj. 1897 R.B. Meander	N.84°43'W. 6.69	
N.73°59'W. 1.98	N.77°48'W. 3.49	
N.50°59'W. 1.89	S.89°13'W. 1.97	
N.46°05'W. 2.48	N.76°14'W. 1.84	
N.58°49'W. 3.42	N.86°04'W. 3.86	
N.65°27'W. 2.11	N.69°58'W. 2.44	
N.61°21'W. 3.68	N.82°57'W. 1.29	
N.68°43'W. 1.40	N.64°56'W. 3.01	
S.78°36'W. 0.85	N.55°30'W. 4.01	
N.43°58'W. 1.45	N.39°13'W. 2.61	
N.57°54'W. 12.10	N.79°33'W. 3.40	
N.66°31'W. 1.13	N.33°01'W. 1.02	
N.66°31'W. 1.34	N.86°13'W. 1.37	
N.26°22'W. 0.49	N.55°19'W. 6.31	
N.69°22'W. 5.03	N.25°23'W. 1.83	
N.46°58'W. 4.64	N.67°21'W. 1.60	
N.45°25'W. 2.14	N.32°42'W. 2.04	
AP sections 17 and 20	S.67°00'W. 0.51	
	AP sections 19 and 20	

Reference should be made to sheet No. 1 for survey and disclaimer information.

UNITED STATES DEPARTMENT OF THE INTERIOR
BUREAU OF LAND MANAGEMENT

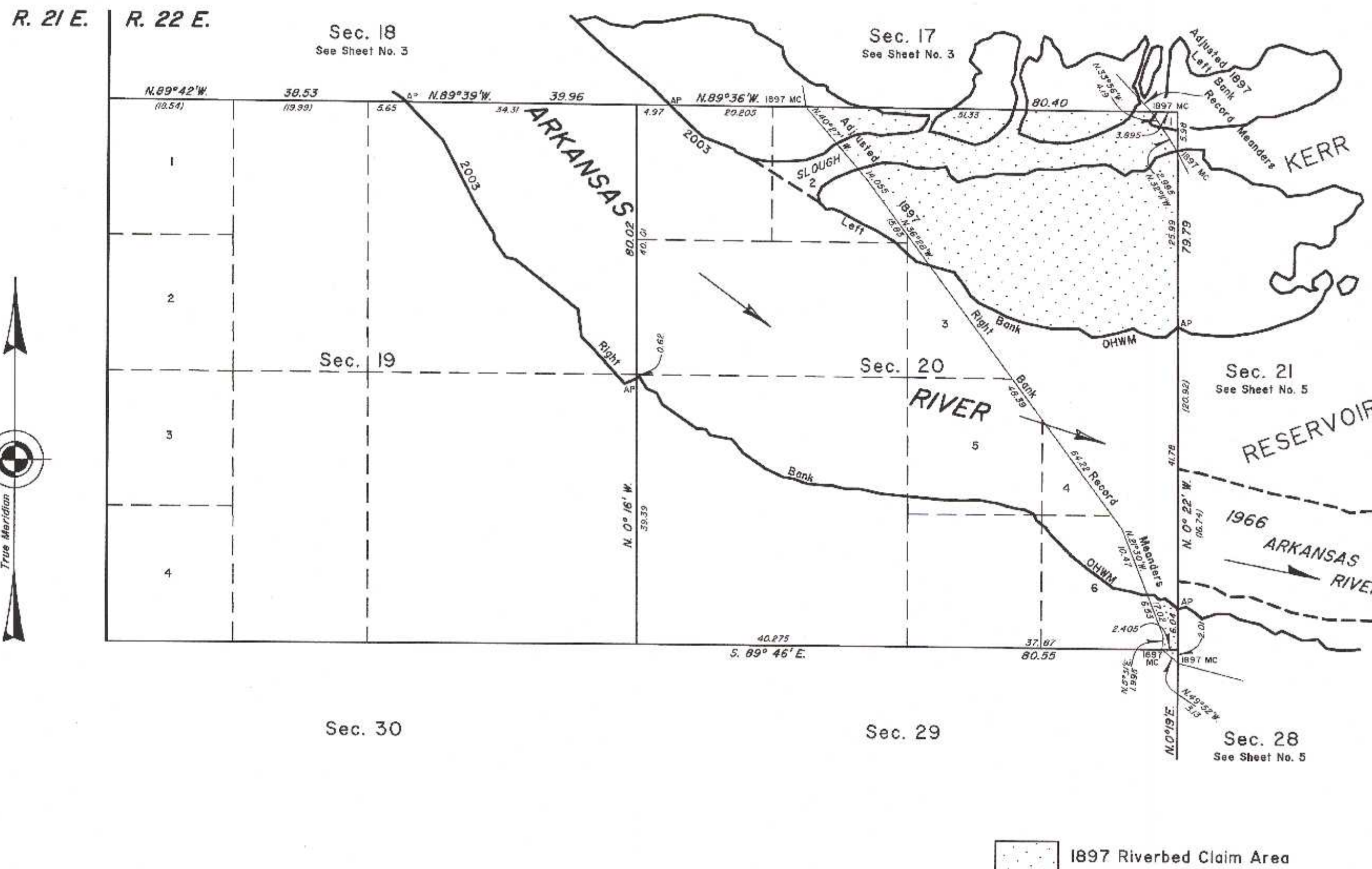
Sante Fe, New Mexico July 22, 2011

This plat is strictly conformable to the approved field notes, and the survey, having been correctly executed in accordance with the requirements of law and the regulations of this Bureau, is hereby accepted.

For the Director



Chief Cadastral Surveyor for New Mexico



2003 Arkansas Riverbed in Section 19 Claim Area ± 76.68 Acres	2003 Arkansas Riverbed in Section 20 Claim Area ± 305.82 Acres	1897 Arkansas Riverbed in Section 29 Claim Area ± 0.24 Acres
	1897 Arkansas Riverbed Claim Area ± 135.15 Acres	

