

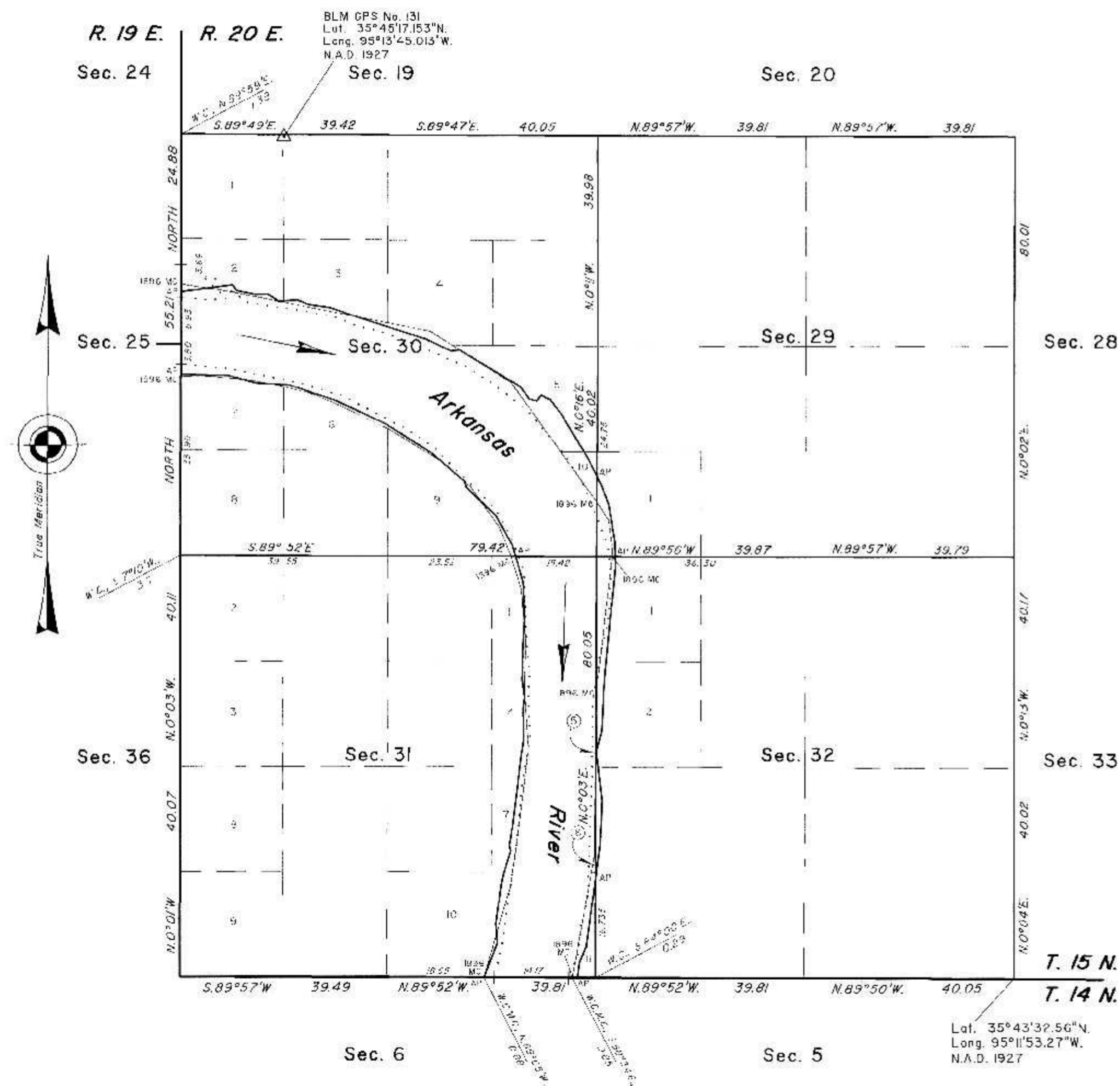
# TOWNSHIP 15 NORTH, RANGE 20 EAST, OF THE INDIAN MERIDIAN, OKLAHOMA

## DEPENDENT RESURVEY AND SURVEY

### INDEX OF SECTION ENLARGEMENTS

SECTION 29 See Sheet No. 2    SECTION 31 See Sheet No. 3  
SECTION 30 See Sheet No. 2    SECTION 32 See Sheet No. 3

Boundary of Historic Riverbed ( · · · · · )



Left Bank Boundary of Historic Riverbed	Right Bank Boundary of Historic Riverbed
--	---

From a point on the south boundary of section 31, N.89°52'W., 5.06 chs. from the cor. of secs. 5, 6, 31 and 32, thence in section 31;

N.2°21'E., 3.55

Adj. 1896 L.B. Meander

N.2°21'E., 1.51

N.5°33'E., 3.73

Adj. 1896 L.B. Meander

N.8°33'E., 2.07

N.5°46'E., 1.65

Adj. 1896 L.B. Meander

N.5°46'E., 2.33

N.2°08'E., 1.67

Adj. 1896 L.B. Meander

N.2°08'E., 23.00

N.0°08'E., 11.47

N.3°42'E., 4.33

N.10°04'E., 2.37

Secs. 31 and 32 thence in Sec. 32;

N.10°04'E., 5.67

Adj. 1896 L.B. Meander

N.10°04'E., 0.10

N.17°22'E., 3.15

N.7°02'E., 5.30

N.0°55'E., 6.21

Adj. 1896 L.B. Meander

N.0°55'E., 0.47

N.7°29'W., 2.32

Secs. 29 and 32 thence in Sec. 29;

N.7°31'W., 2.33

N.2°50'W., 5.49

Secs. 29 and 30 thence in Sec. 30;

N.21°48'W., 6.07

N.30°20'W., 2.96

Adj. 1896 L.B. Meander

N.30°20'W., 3.25

N.40°03'W., 4.10

Adj. 1896 L.B. Meander

N.40°03'W., 8.06

N.5°58'W., 5.35

N.57°57'W., 6.08

N.66°51'W., 14.69

N.75°04'W., 7.41

N.69°21'W., 5.30

N.80°38'W., 16.53

N.54°46'W., 3.00

Adj. 1896 L.B. Meander

N.64°46'W., 4.52

N.75°58'W., 2.62

N.47°43'E., 3.93

Adj. 1896 L.B. Meander

N.47°43'E., 2.55

N.87°50'W., 4.02

N.84°00'W., 4.66

Secs. 25 and 30.

W. Rej. of Tp.

From a point on the south boundary of section 31, N.89°52'W., 19.23 chs. from the cor. of secs. 5, 6, 31 and 32, thence in section 31;

N.16°37'E., 1.28

N.11°24'E., 6.22

N.8°05'E., 12.31

Adj. 1896 R.B. Meander

N.8°05'E., 4.75

N.5°30'E., 12.26

N.9°16'E., 7.37

Adj. 1896 R.B. Meander

N.9°16'E., 2.01

N.3°38'W., 4.68

N.0°41'E., 8.08

N.6°15'W., 3.05

N.2°37'W., 15.88

N.20°28'W., 2.92

Secs. 30 and 31 thence in Sec. 30;

N.20°31'W., 3.29

N.26°37'W., 5.67

N.40°26'W., 5.78

N.48°24'W., 4.99

N.43°43'W., 6.29

N.55°31'W., 6.78

N.63°02'W., 14.62

N.74°17'W., 6.46

N.77°58'W., 14.38

N.83°48'W., 8.13

N.86°57'W., 1.83

Secs. 25 and 30.

W. Rej. of Tp.

Additional survey information and a history of surveys are contained in the field notes.

This plat, in three sheets, represents the dependent resurvey of a portion of the south boundary, a portion of the west boundary, a portion of the subdivisonal lines, and the adjusted record meanders of the 1896 right and left banks of the Arkansas River, designed to restore the corners in their true original locations according to the best available evidence, the informative traverse of the 2003 right and left banks ordinary high water mark (OHWM) of the Arkansas River, as digitized from aerial photography (identifying said riverbed as instructed by Public Law No. 107-331, enacted December 13, 2002), and the informative survey of the boundary of the historic riverbed of the Arkansas River and the calculated acreages of the Arkansas Riverbed, Township 15 North, Range 20 East, Indian Meridian, Oklahoma.

Except as indicated hereon, the lottings and areas are as shown on the plat approved July 11, 1898.

Survey executed by Mark L. Bush, Supervisory Cadastral Surveyor, beginning July 22, 1991 and completed April 13, 1992, pursuant to Special Instructions approved July 23, 1990, for Group No. 67, Oklahoma.

### SETTLEMENT ACT

The Settlement Act of January 23, 2002, set forth in Public Law No. 107-331, dated December 13, 2002, defines in Sections 602 (17), 604 (2),(4) and (6) and 605 of said act, the Indian Nations claim to certain riverbed and wetbed lands. Further defined, said Section 602 (17), provides that "... each Indian Nation expressly reserved all of its beneficial interest and title to all other Riverbed lands, including minerals", pursuant to United States Supreme Court decision 397 U.S. 620 (1970), "and further reserved any and all right, title, or interest that each nation may have in and to the water flowing in the Arkansas River and its tributaries." The status of lands are as defined in said act.

UNITED STATES DEPARTMENT OF THE INTERIOR  
BUREAU OF LAND MANAGEMENT

Sante Fe, New Mexico                      September 28, 2012

This plat is strictly conformable to the approved field notes, and the survey, having been correctly executed in accordance with the requirements of law and the regulations of this Bureau, is hereby accepted.

For the Director

Chief Cadastral Surveyor for New Mexico