

EXHIBIT "A"

~BASIS OF BEARING~
As shown on the official BLM plat, approved July 22, 2010, referenced to the true meridian.

LEGAL DESCRIPTION EXHIBIT

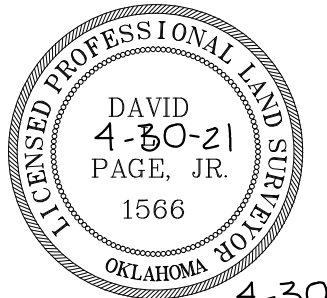
SECTION 13, TOWNSHIP 10 NORTH, RANGE 24 EAST
LEFLORE AND SEQUOYAH COUNTY, STATE OF OKLAHOMA.



124 SOUTH 8th AVENUE
DURANT, OKLAHOMA 74701
(580) 920-9101 OR (580) 239-0176
FAX (580) 920-9121

DAVID L. PAGE JR. © 2021
PROFESSIONAL LAND SURVEYOR #1566
C.A. # 1991, EXPIRES 6-30-2021

Surveyor's Seal



4-30-21
DATE SIGNED

David L. Page
DAVID L. PAGE, JR. P.L.S. #1566

LOCATION
SECTION 12
TOWNSHIP 10 NORTH, RANGE 24 EAST
LEFLORE AND SEQUOYAH COUNTY

GENERAL NOTES

SUBJECT TO EASEMENTS AND/OR RIGHTS-OF-WAY, EITHER RECORDED, OR IMPLIED, THEREOF.
NO UTILITIES OF ANY KIND HAVE BEEN LOCATED EXCEPT THOSE SHOWN ON THE ABOVE PLAT
CONTROLLING CORNERS FOR THIS LEGAL DESCRIPTION ARE AS INDICATED ON THE LOCATION MAP
THIS IS NOT A VALID LEGAL DESCRIPTION WITHOUT THE SURVEYORS ORIGINAL SIGNATURE AND ORIGINAL SEAL
PORTIONS OF THIS PLAT ARE IN COLOR, PHOTO AND ELECTRONIC COPIES OF THIS PLAT MAKE IT INVALID AND MAY ALTER ITS MEANING
THIS EXHIBIT AND LEGAL DESCRIPTION MEETS THE OKLAHOMA MINIMUM STANDARDS FOR THE PRACTICE OF LAND SURVEYING AS ADOPTED BY THE OKLAHOMA STATE BOARD OF LICENSURE FOR PROFESSIONAL ENGINEERS AND LAND SURVEYORS.

NO.	REVISION/ISSUE	DATE

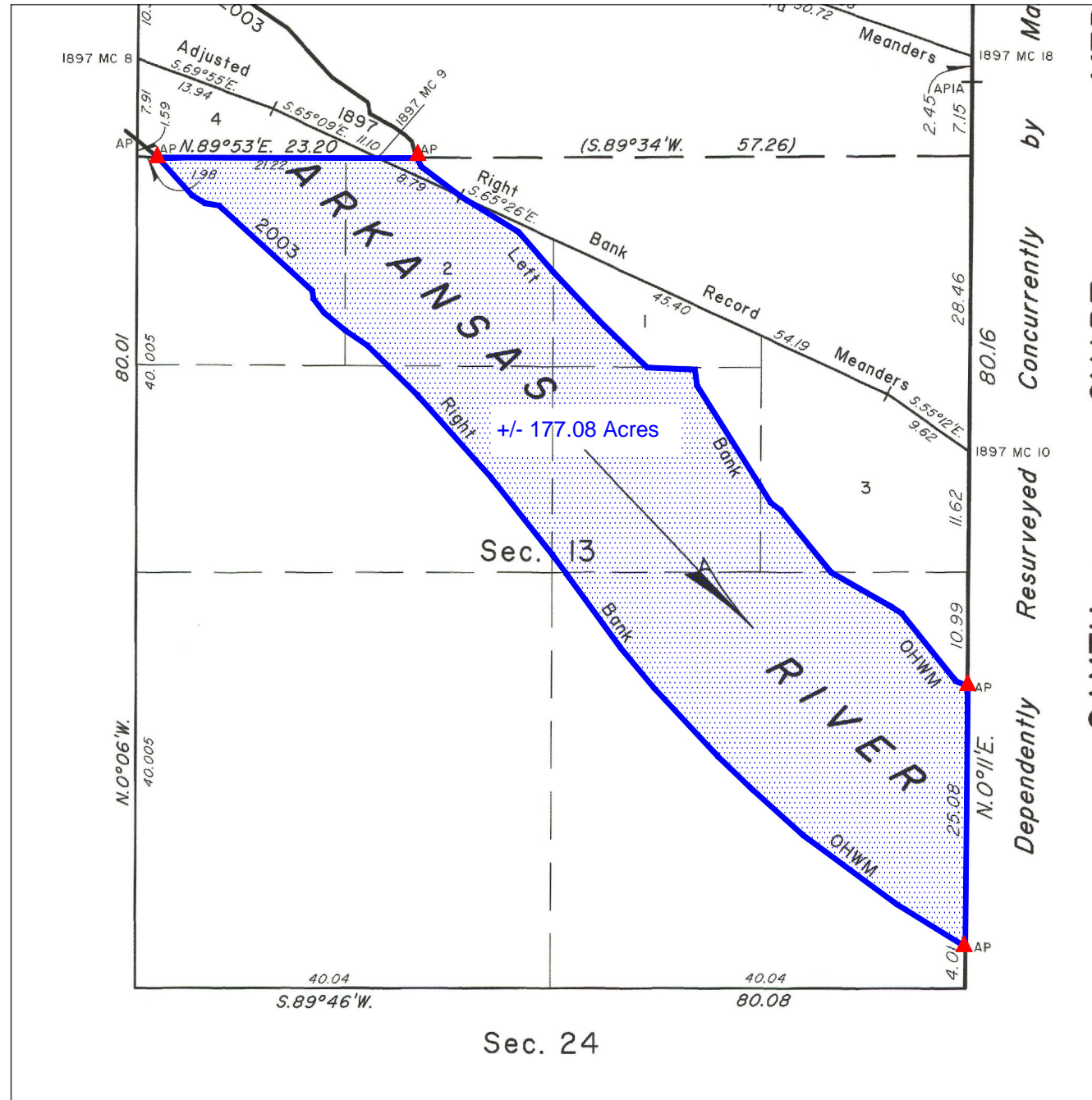
SURVEY INFORMATION		
FIELD WORK PERFORMED:	NONE	
DATE OF LAST SITE VISIT:	NONE	
EXHIBIT COMPLETED:	4-30-21	

Project Name and Address
ARKANSAS RIVER EXHIBIT
SECTION 12, TOWNSHIP 10 NORTH, RANGE 24 EAST
LEFLORE AND SEQUOYAH COUNTY, STATE OF OKLAHOMA.

SCALE
1" = 1000'

SHEET NO.
1 OF 1

DATE
4-30-21



LEGAL DESCRIPTION:

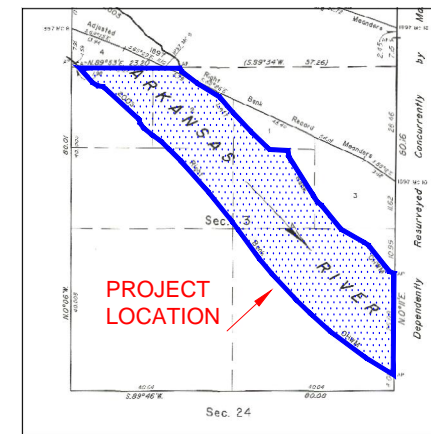
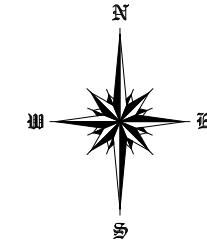
A parcel of land situated in section 13 of township 10 north, range 24 east, Indian Meridian, LeFlore and Sequoyah County, Oklahoma, being the wet bed acres of section 13, and being more particularly described as follows:

- BEGINNING** at the angle point of sections 13 and 18, at the digitized 2003 left bank ordinary high-water mark, upstream along said mark in section 13;
- THENCE**, upstream aforesaid mark, N. 67°08' W., 83.16 feet;
- THENCE**, N. 38°56' W., 551.10 feet;
- THENCE**, N. 57°29' W., 73.92 feet;
- THENCE**, N. 60°29' W., 446.82 feet;
- THENCE**, N. 39°16' W., 510.18 feet;
- THENCE**, N. 54°15' W., 77.22 feet;
- THENCE**, N. 32°23' W., 118.14 feet;
- THENCE**, N. 32°24' W., 764.28 feet;
- THENCE**, N. 08°12' W., 100.98 feet;
- THENCE**, N. 87°38' W., 304.26 feet;
- THENCE**, N. 46°01' W., 427.02 feet;
- THENCE**, N. 43°28' W., 422.40 feet;
- THENCE**, N. 41°11' W., 337.26 feet;
- THENCE**, N. 58°47' W., 433.62 feet to the adjusted 1897 right bank record meanders;
- THENCE**, N. 53°05' W., 316.14 feet;
- THENCE**, N. 26°12' W., 58.74 feet to the angle point of section 13 and 18 at the digitized 2003 left bank ordinary high-water mark;
- THENCE**, S. 89°34' W., along the line between sections 12 and 13, 247.94 feet to the 1897 meander corner at the adjusted 1897 right bank record meanders ;
- THENCE**, S. 89°53' W., 1400.52 feet to the angle point of sections 12 and 13 at the digitized 2003 right bank ordinary high-water mark, downstream along said mark in section 13
- THENCE**, downstream aforesaid mark, S. 42°12' E., 324.72 feet;
- THENCE**, S. 59°07' E., 97.68 feet;
- THENCE**, S. 81°22' E., 88.44 feet;
- THENCE**, S. 47°53' E., 803.88 feet;
- THENCE**, S. 08°56' E., 53.46 feet;
- THENCE**, S. 37°08' E., 107.58 feet;
- THENCE**, S. 50°42' E., 178.86 feet;
- THENCE**, S. 55°53' E., 169.62 feet;
- THENCE**, S. 45°40' E., 186.12 feet;
- THENCE**, S. 45°32' E., 266.64 feet;
- THENCE**, S. 41°58' E., 697.62 feet;
- THENCE**, S. 38°45' E., 628.32 feet;
- THENCE**, S. 36°45' E., 141.90 feet;
- THENCE**, S. 36°24' E., 591.36 feet;
- THENCE**, S. 40°03' E., 327.36 feet;
- THENCE**, S. 43°18' E., 599.28 feet;
- THENCE**, S. 46°21' E., 291.72 feet;
- THENCE**, S. 48°17' E., 445.50 feet;
- THENCE**, S. 53°45' E., 735.90 feet;
- THENCE**, S. 58°32' E., 522.06 feet to the angle point between sections 13 and 18 at the digitized 2003 right bank ordinary high-water mark;
- THENCE**, N. 00°11' E., along the line between sections 13 and 18, 1655.28 feet to the **POINT OF BEGINNING**, containing +/- 177.08 acres.

BASIS OF BEARINGS: As shown on the official BLM plat, approved July 22, 2010, referenced to the true meridian.

Meaning and intending to describe the parcel derived from the Official Bureau of Land Management plats and field notes of the Dependent Resurvey and Survey of the Arkansas River Bed approved July 22, 2010. The purpose of this description is to describe the wet bed areas as shown on the plat. This is exclusively for use by the Arkansas Riverbed Authority and the Choctaw, Chickasaw and Cherokee Nations of Oklahoma. Accuracy and acreages defined by the original survey documentation.

Note: See Exhibit "A" enlargement of the official Bureau of Land Management Plat attached.



LOCATION MAP

LEGEND

These standard symbols may be found in the drawing.

- CALCULATED AREA LIMITS
- CALCULATED CORNER



SURVEYOR'S SPECIAL NOTE:

1. MEANING AND INTENDING TO DESCRIBE THE PARCEL DERIVED FROM THE OFFICIAL BUREAU OF LAND MANAGEMENT PLATS AND FIELDNOTES OF THE DEPENDENT RESURVEY AND SURVEY OF THE ARKANSAS RIVER BED APPROVED JULY 22, 2010. THE PURPOSE OF THIS DESCRIPTION IS TO DESCRIBE THE WET BED AREAS AS SHOWN ON THE PLAT. THIS IS EXCLUSIVELY FOR USE BY THE ARKANSAS RIVERBED AUTHORITY AND THE CHOCTAW, CHICKASAW AND CHEROKEE NATIONS OF OKLAHOMA. ACCURACY AND ACRES ARE DEFINED BY THE ORIGINAL SURVEY DOCUMENTATION.

2. THIS IS NOT A BOUNDARY SURVEY AND IS NOT INTENDED TO BE USED AS A BOUNDARY SURVEY. NO FIELD WORK HAS BEEN DONE AND NO MONUMENTS HAVE BEEN VERIFIED.

LEGAL DESCRIPTION:

A parcel of land situated in section 13 of township 10 north, range 24 east, Indian Meridian, LeFlore and Sequoyah County, Oklahoma, being the wet bed acres of section 13, and being more particularly described as follows:

BEGINNING at the angle point of sections 13 and 18, at the digitized 2003 left bank ordinary high-water mark, upstream along said mark in section 13;

THENCE, upstream aforesaid mark, N. 67°08' W., 83.16 feet;

THENCE, N. 38°56' W., 551.10 feet;

THENCE, N. 57°29' W., 73.92 feet;

THENCE, N. 60°29' W., 446.82 feet;

THENCE, N. 39°16' W., 510.18 feet;

THENCE, N. 54°15' W., 77.22 feet;

THENCE, N. 32°23' W., 118.14 feet;

THENCE, N. 32°24' W., 764.28 feet;

THENCE, N. 08°12' W., 100.98 feet;

THENCE, N. 87°38' W., 304.26 feet;

THENCE, N. 46°01' W., 427.02 feet;

THENCE, N. 43°28' W., 422.40 feet;

THENCE, N. 41°11' W., 337.26 feet;

THENCE, N. 58°47' W., 433.62 feet to the adjusted 1897 right bank record meanders;

THENCE, N. 53°05' W., 316.14 feet;

THENCE, N. 26°12' W., 58.74 feet to the angle point of section 13 and 18 at the digitized 2003 left bank ordinary high-water mark;

THENCE, S. 89°34' W., along the line between sections 12 and 13, 247.94 feet to the 1897 meander corner at the adjusted 1897 right bank record meanders ;

THENCE, S. 89°53' W., 1400.52 feet to the angle point of sections 12 and 13 at the digitized 2003 right bank ordinary high-water mark, downstream along said mark in section 13

THENCE, downstream aforesaid mark, S. 42°12' E., 324.72 feet;

THENCE, S. 59°07' E., 97.68 feet;

THENCE, S. 81°22' E., 88.44 feet;

THENCE, S. 47°53' E., 803.88 feet;

THENCE, S. 08°56' E., 53.46 feet;

THENCE, S. 37°08' E., 107.58 feet;

THENCE, S. 50°42' E., 178.86 feet;

THENCE, S. 55°53' E., 169.62 feet;

THENCE, S. 45°40' E., 186.12 feet;

THENCE, S. 45°32' E., 266.64 feet;

THENCE, S. 41°58' E., 697.62 feet;

THENCE, S. 38°45' E., 628.32 feet;

THENCE, S. 36°45' E., 141.90 feet;

THENCE, S. 36°24' E., 591.36 feet;

THENCE, S. 40°03' E., 327.36 feet;

THENCE, S. 43°18' E., 599.28 feet;

THENCE, S. 46°21' E., 291.72 feet;

THENCE, S. 48°17' E., 445.50 feet;

THENCE, S. 53°45' E., 735.90 feet;

THENCE, S. 58°32' E., 522.06 feet to the angle point between sections 13 and 18 at the digitized 2003 right bank ordinary high-water mark;

THENCE, N. 00°11' E., along the line between sections 13 and 18, 1655.28 feet to the **POINT OF BEGINNING**, containing +/- 177.08 acres.

BASIS OF BEARINGS: As shown on the official BLM plat, approved July 22, 2010, referenced to the true meridian.

Meaning and intending to describe the parcel derived from the Official Bureau of Land Management plats and field notes of the Dependent Resurvey and Survey of the Arkansas River Bed approved July 22, 2010. The purpose of this description is to describe the wet bed areas as shown on the plat. This is exclusively for use by the Arkansas Riverbed Authority and the Choctaw, Chickasaw and Cherokee Nations of Oklahoma. Accuracy and acreages defined by the original survey documentation.

Note: See Exhibit "A" enlargement of the official Bureau of Land Management Plat attached.

David L. Page
DAVID L. PAGE, JR. P.L.S. #1566

4-30-21
DATE SIGNED

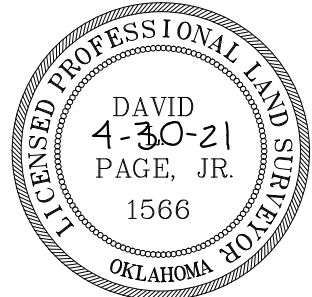


EXHIBIT "A"

~BASIS OF BEARING~
As shown on the official BLM plat, approved July 22, 2010, referenced to the true meridian.

LEGAL DESCRIPTION EXHIBIT

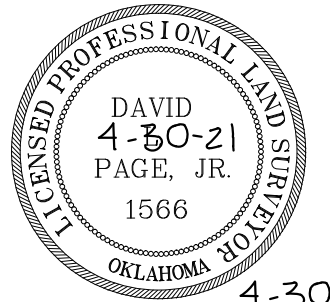
SECTION 12, TOWNSHIP 10 NORTH, RANGE 24 EAST
LEFLORE AND SEQUOYAH COUNTY, STATE OF OKLAHOMA.



124 SOUTH 8th AVENUE
DURANT, OKLAHOMA 74701
(580) 920-9101 OR (580) 239-0176
FAX (580) 920-9121

DAVID L. PAGE JR. © 2021
PROFESSIONAL LAND SURVEYOR #1566
C.A. # 1991, EXPIRES 6-30-2021

Surveyor's Seal



4-30-21
DATE SIGNED

David L. Page
DAVID L. PAGE, JR. P.L.S. #1566

LOCATION
SECTION 12
TOWNSHIP 10 NORTH, RANGE 24 EAST
LEFLORE AND SEQUOYAH COUNTY

GENERAL NOTES

SUBJECT TO EASEMENTS AND/OR RIGHTS-OF-WAY, EITHER RECORDED, OR IMPLIED, THEREOF.
NO UTILITIES OF ANY KIND HAVE BEEN LOCATED EXCEPT THOSE SHOWN ON THE ABOVE PLAT
CONTROLLING CORNERS FOR THIS LEGAL DESCRIPTION ARE AS INDICATED ON THE LOCATION MAP
THIS IS NOT A VALID LEGAL DESCRIPTION WITHOUT THE SURVEYORS ORIGINAL SIGNATURE AND ORIGINAL SEAL
PORTIONS OF THIS PLAT ARE IN COLOR, PHOTO AND ELECTRONIC COPIES OF THIS PLAT MAKE IT INVALID AND MAY ALTER ITS MEANING
THIS EXHIBIT AND LEGAL DESCRIPTION MEETS THE OKLAHOMA MINIMUM STANDARDS FOR THE PRACTICE OF LAND SURVEYING AS ADOPTED BY THE OKLAHOMA STATE BOARD OF LICENSURE FOR PROFESSIONAL ENGINEERS AND LAND SURVEYORS.

NO.	REVISION/ISSUE	DATE

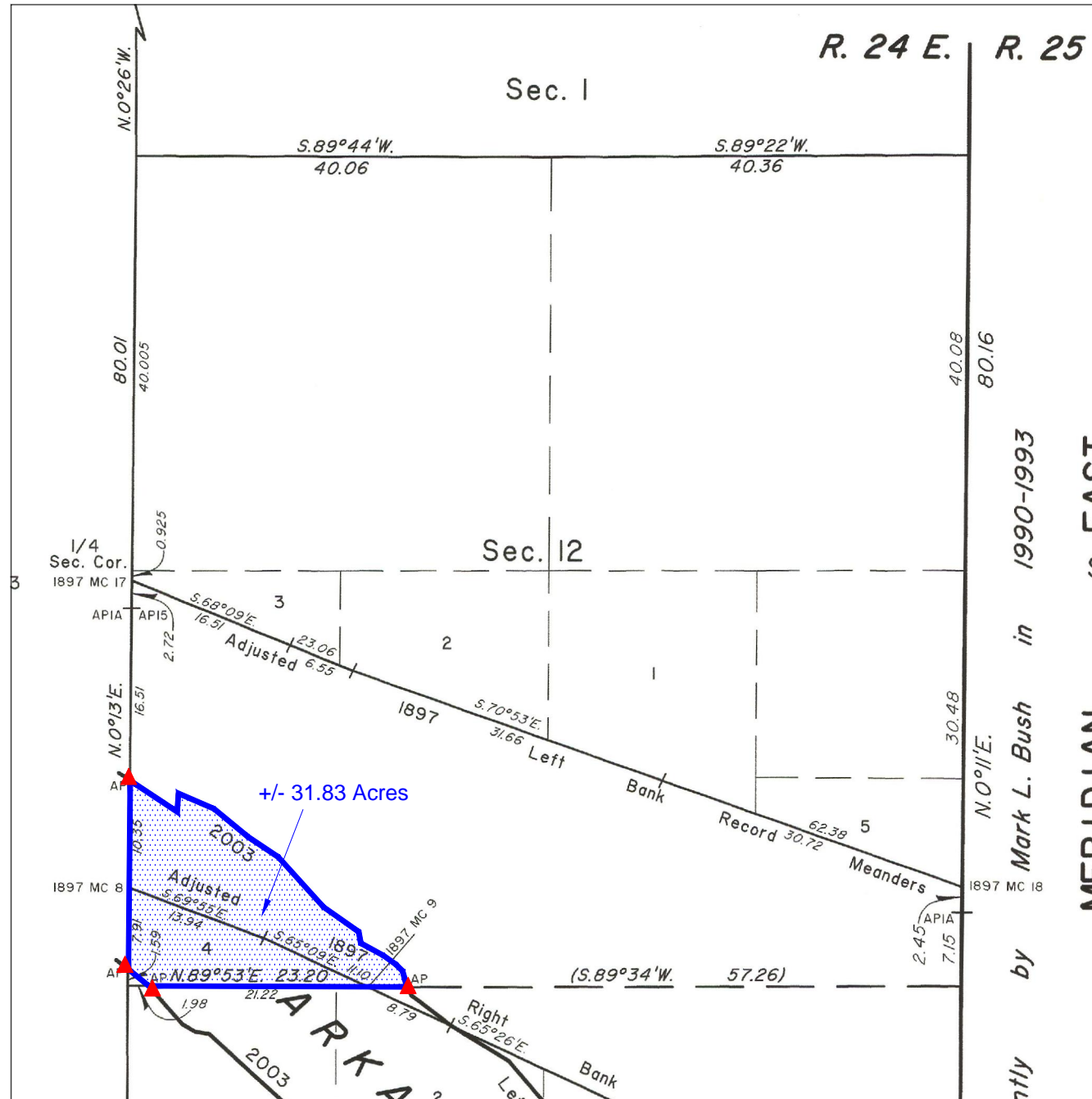
SURVEY INFORMATION	
FIELD WORK PERFORMED:	NONE
DATE OF LAST SITE VISIT:	NONE
EXHIBIT COMPLETED:	4-30-21

Project Name and Address
ARKANSAS RIVER EXHIBIT
SECTION 12, TOWNSHIP 10 NORTH, RANGE 24 EAST
LEFLORE AND SEQUOYAH COUNTY, STATE OF OKLAHOMA.

SCALE
1" = 1000'

SHEET NO.
1 OF 1

DATE
4-30-21



LEGAL DESCRIPTION:

A parcel of land situated in section 12 of township 10 north, range 24 east, Indian Meridian, LeFlore and Sequoyah County, Oklahoma, being the wet bed acres of section 12, and being more particularly described as follows:

BEGINNING at the angle point of sections 12 and 13, at the digitized 2003 left bank ordinary high-water mark, upstream along said mark in section 12;

THENCE, upstream aforesaid mark, N. 26°12' W., 23.10 feet;

THENCE, N. 15°44' W., 85.14 feet;

THENCE, N. 46°00' W., 61.38 feet;

THENCE, N. 55°10' W., 96.36 feet;

THENCE, N. 62°09' W., 162.36 feet;

THENCE, N. 10°17' W., 74.58 feet;

THENCE, N. 55°16' W., 275.22 feet;

THENCE, N. 42°26' W., 424.38 feet;

THENCE, N. 56°26' W., 236.94 feet;

THENCE, N. 50°55' W., 279.18 feet;

THENCE, N. 66°57' W., 246.84 feet;

THENCE, S. 03°22' W., 114.18 feet;

THENCE, N. 56°50' W., 359.04 feet to the angle point of section 11 and 12 at the digitized 2003 left bank ordinary high-water mark;

THENCE, S. 00°13' W., along the line between sections 11 and 12, 1205.16 feet the digitized 2003 right bank ordinary high-water mark, downstream along said mark in section 12;

THENCE, downstream aforesaid mark, S. 51°14' E., 166.98 feet to the angle point 12 and 13, at the digitized 2003 right bank ordinary high-water mark;

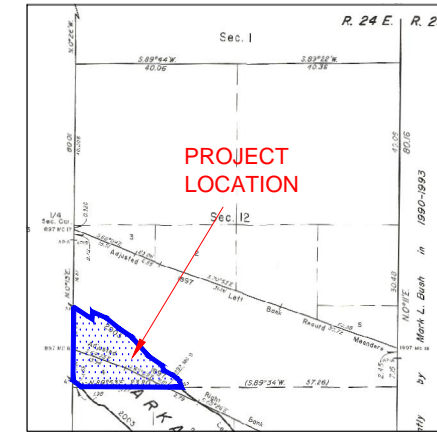
THENCE, N. 89°53' E., along the line between sections 11 and 12, 1400.52 feet to the 1897 meander corner at the adjusted 1897 right bank record meanders;

THENCE, N. 89°34' E., along the line between sections 11 and 12, 247.94 feet to the **POINT OF BEGINNING**, containing +/- 31.83 acres.

BASIS OF BEARINGS: As shown on the official BLM plat, approved July 22, 2010, referenced to the true meridian.

Meaning and intending to describe the parcel derived from the Official Bureau of Land Management plats and field notes of the Dependent Resurvey and Survey of the Arkansas River Bed approved July 22, 2010. The purpose of this description is to describe the wet bed areas as shown on the plat. This is exclusively for use by the Arkansas Riverbed Authority and the Choctaw, Chickasaw and Cherokee Nations of Oklahoma. Accuracy and acreages defined by the original survey documentation.

Note: See Exhibit "A" enlargement of the official Bureau of Land Management Plat attached.

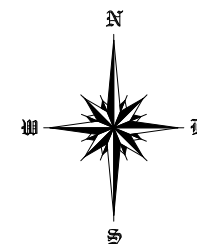


LOCATION MAP

LEGEND

These standard symbols may be found in the drawing.

- CALCULATED AREA LIMITS
- ▲ CALCULATED CORNER



SURVEYOR'S SPECIAL NOTE:

1. MEANING AND INTENDING TO DESCRIBE THE PARCEL DERIVED FROM THE OFFICIAL BUREAU OF LAND MANAGEMENT PLATS AND FIELDNOTES OF THE DEPENDENT RESURVEY AND SURVEY OF THE ARKANSAS RIVER BED APPROVED JULY 22, 2010. THE PURPOSE OF THIS DESCRIPTION IS TO DESCRIBE THE WET BED AREAS AS SHOWN ON THE PLAT. THIS IS EXCLUSIVELY FOR USE BY THE ARKANSAS RIVERBED AUTHORITY AND THE CHOCTAW, CHICKASAW AND CHEROKEE NATIONS OF OKLAHOMA. ACCURACY AND ACREAGES DEFINED BY THE ORIGINAL SURVEY DOCUMENTATION.

2. THIS IS NOT A BOUNDARY SURVEY AND IS NOT INTENDED TO BE USED AS A BOUNDARY SURVEY. NO FIELD WORK HAS BEEN DONE AND NO MONUMENTS HAVE BEEN VERIFIED.

David L. Page, Jr. (4/30/21)
LS #1566

LEGAL DESCRIPTION:

A parcel of land situated in section 12 of township 10 north, range 24 east, Indian Meridian, LeFlore and Sequoyah County, Oklahoma, being the wet bed acres of section 12, and being more particularly described as follows:

BEGINNING at the angle point of sections 12 and 13, at the digitized 2003 left bank ordinary high-water mark, upstream along said mark in section 12;

THENCE, upstream aforesaid mark, N. 26°12' W., 23.10 feet;

THENCE, N. 15°44' W., 85.14 feet;

THENCE, N. 46°00' W., 61.38 feet;

THENCE, N. 55°10' W., 96.36 feet;

THENCE, N. 62°09' W., 162.36 feet;

THENCE, N. 10°17' W., 74.58 feet;

THENCE, N. 55°16' W., 275.22 feet;

THENCE, N. 42°26' W., 424.38 feet;

THENCE, N. 56°26' W., 236.94 feet;

THENCE, N. 50°55' W., 279.18 feet;

THENCE, N. 66°57' W., 246.84 feet;

THENCE, S. 03°22' W., 114.18 feet;

THENCE, N. 56°50' W., 359.04 feet to the angle point of section 11 and 12 at the digitized 2003 left bank ordinary high-water mark;

THENCE, S. 00°13' W., along the line between sections 11 and 12, 1205.16 feet the digitized 2003 right bank ordinary high-water mark, downstream along said mark in section 12;

THENCE, downstream aforesaid mark, S. 51°14' E., 166.98 feet to the angle point 12 and 13, at the digitized 2003 right bank ordinary high-water mark;

THENCE, N. 89°53' E., along the line between sections 11 and 12, 1400.52 feet to the 1897 meander corner at the adjusted 1897 right bank record meanders;

THENCE, N. 89°34' E., along the line between sections 11 and 12, 247.94 feet to the **POINT OF BEGINNING**, containing +/- 31.83 acres.

BASIS OF BEARINGS: As shown on the official BLM plat, approved July 22, 2010, referenced to the true meridian.

Meaning and intending to describe the parcel derived from the Official Bureau of Land Management plats and field notes of the Dependent Resurvey and Survey of the Arkansas River Bed approved July 22, 2010. The purpose of this description is to describe the wet bed areas as shown on the plat. This is exclusively for use by the Arkansas Riverbed Authority and the Choctaw, Chickasaw and Cherokee Nations of Oklahoma. Accuracy and acreages defined by the original survey documentation.

Note: See Exhibit "A" enlargement of the official Bureau of Land Management Plat attached.

David L. Page, Jr. (4/30/21)
LS #1566



DAVID L. PAGE, JR. P.L.S. #1566

4-30-21
DATE SIGNED



EXHIBIT "A"

~BASIS OF BEARING~
As shown on the official BLM plat, approved July 22, 2010, referenced to the true meridian.

LEGAL DESCRIPTION EXHIBIT

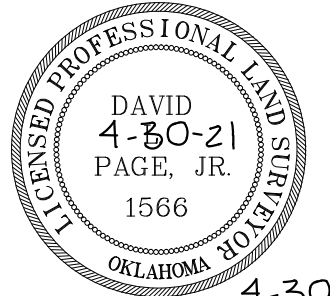
SECTION 11, TOWNSHIP 10 NORTH, RANGE 24 EAST
LEFLORE AND SEQUOYAH COUNTY, STATE OF OKLAHOMA.



124 SOUTH 8th AVENUE
DURANT, OKLAHOMA 74701
(580) 920-9101 OR (580) 239-0176
FAX (580) 920-9121

DAVID L. PAGE JR. © 2021
PROFESSIONAL LAND SURVEYOR #1566
C.A. # 1991, EXPIRES 6-30-2021

Surveyor's Seal



4-30-21
DATE SIGNED

David L. Page
DAVID L. PAGE, JR. P.L.S. #1566

LOCATION
SECTION 12
TOWNSHIP 10 NORTH, RANGE 24 EAST
LEFLORE AND SEQUOYAH COUNTY

GENERAL NOTES

SUBJECT TO EASEMENTS AND/OR RIGHTS-OF-WAY, EITHER RECORDED, OR IMPLIED, THEREOF.
NO UTILITIES OF ANY KIND HAVE BEEN LOCATED EXCEPT THOSE SHOWN ON THE ABOVE PLAT
CONTROLLING CORNERS FOR THIS LEGAL DESCRIPTION ARE AS INDICATED ON THE LOCATION MAP
THIS IS NOT A VALID LEGAL DESCRIPTION WITHOUT THE SURVEYORS ORIGINAL SIGNATURE AND ORIGINAL SEAL
PORTIONS OF THIS PLAT ARE IN COLOR, PHOTO AND ELECTRONIC COPIES OF THIS PLAT MAKE IT INVALID AND MAY ALTER ITS MEANING
THIS EXHIBIT AND LEGAL DESCRIPTION MEETS THE OKLAHOMA MINIMUM STANDARDS FOR THE PRACTICE OF LAND SURVEYING AS ADOPTED BY THE OKLAHOMA STATE BOARD OF LICENSURE FOR PROFESSIONAL ENGINEERS AND LAND SURVEYORS.

NO.	REVISION/ISSUE	DATE

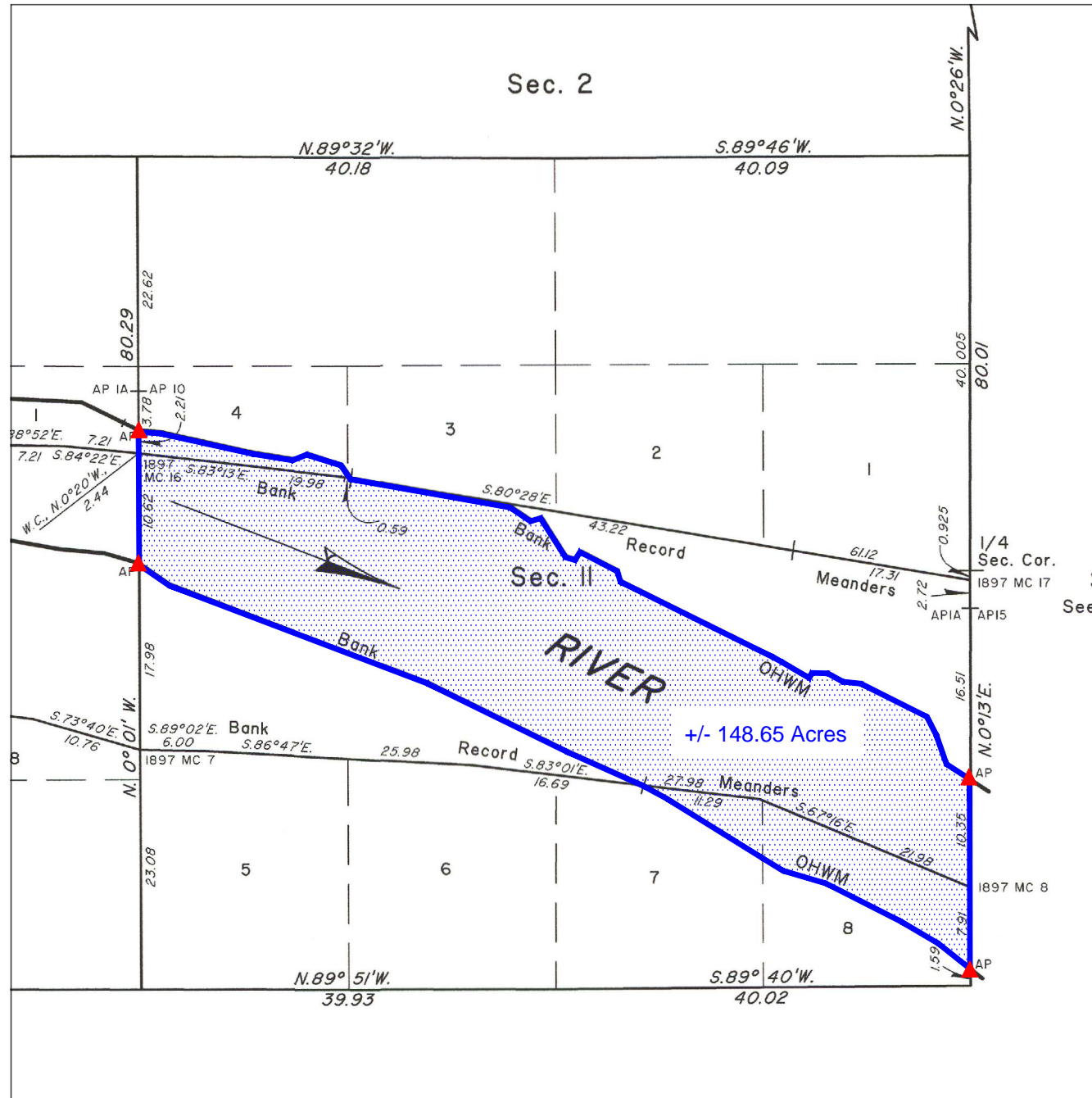
SURVEY INFORMATION	
FIELD WORK PERFORMED:	NONE
DATE OF LAST SITE VISIT:	NONE
EXHIBIT COMPLETED:	4-30-21

Project Name and Address
ARKANSAS RIVER EXHIBIT
SECTION 12, TOWNSHIP 10 NORTH, RANGE 24 EAST
LEFLORE AND SEQUOYAH COUNTY, STATE OF OKLAHOMA.

SCALE 1" = 1000'

SHEET NO. 1 OF 1

DATE 4-30-21



LEGAL DESCRIPTION:

A parcel of land situated in section 11 of township 10 north, range 24 east, Indian Meridian, LeFlore and Sequoyah County, Oklahoma, being the wet bed acres of section 11, and being more particularly described as follows:

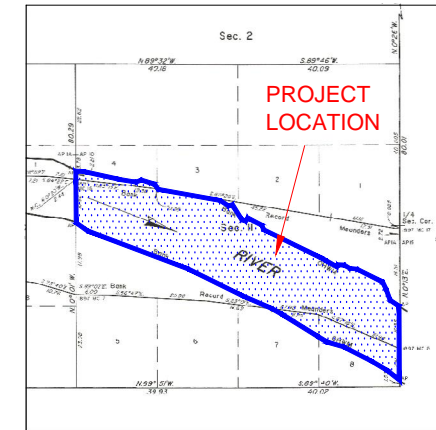
BEGINNING at the angle point of sections 11 and 12, at the digitized 2003 left bank ordinary high-water mark, upstream along said mark in section 11;

- THENCE**, upstream along aforesaid mark, N. 56°50' W., 176.88 feet;
- THENCE**, N. 19°02' W., 196.02 feet;
- THENCE**, N. 26°43' W., 130.02 feet;
- THENCE**, N. 63°01' W., 471.90 feet;
- THENCE**, N. 84°25' W., 113.52 feet;
- THENCE**, N. 60°25' W., 110.88 feet;
- THENCE**, N. 87°52' W., 100.98 feet;
- THENCE**, S. 28°35' W., 36.96 feet;
- THENCE**, N. 59°32' W., 203.28 feet;
- THENCE**, N. 60°11' W., 59.40 feet;
- THENCE**, N. 63°29' W., 1087.68 feet;
- THENCE**, N. 16°04' W., 69.96 feet;
- THENCE**, N. 62°26' W., 266.64 feet;
- THENCE**, S. 32°14' W., 60.06 feet;
- THENCE**, N. 73°00' W., 63.36 feet;
- THENCE**, N. 32°14' W., 294.36 feet;
- THENCE**, S. 74°04' W., 67.32 feet;
- THENCE**, N. 56°09' W., 157.08 feet;
- THENCE**, N. 79°36' W., 1032.90 feet to the Adjusted 1897 Left Bank Record Meanders;
- THENCE**, N. 33°57' W., 104.94 feet;
- THENCE**, N. 72°14' W., 229.02 feet;
- THENCE**, S. 68°42' W., 96.36 feet;
- THENCE**, N. 80°34' W., 258.72 feet;
- THENCE**, N. 77°15' W., 603.24 feet;
- THENCE**, N. 85°44' W., 137.28 feet to the angle point of sections 10 and 11 at the digitized 2003 left bank ordinary high-water mark;
- THENCE**, S. 00°01' E., 700.92 feet to the angle point of sections 10 and 11 at the digitized 2003 right bank ordinary high-water mark, downstream along said mark in section 11;
- THENCE**, downstream along aforesaid mark, S. 55°02' E., 231.66 feet;
- THENCE**, S. 68°57' E., 1759.56 feet;
- THENCE**, S. 63°35' E., 983.40 feet;
- THENCE**, S. 65°39' E., 537.24 feet to the Adjusted 1897 Left Bank Record Meanders;
- THENCE**, S. 61°10' E., 172.56 feet;
- THENCE**, S. 57°53' E., 712.80 feet;
- THENCE**, S. 57°59' E., 156.42 feet;
- THENCE**, S. 73°16' E., 287.76 feet;
- THENCE**, S. 62°52' E., 536.58 feet;
- THENCE**, S. 59°01' E., 274.56 feet;
- THENCE**, S. 51°14' E., 255.42 feet to the angle point of section 11 and 12 at the digitized 2003 right bank ordinary high-water mark;
- THENCE**, N. 0°13' E., along the line between sections 11 and 12, 1205.16 feet to the **POINT OF BEGINNING**, containing +/- 148.65 acres.

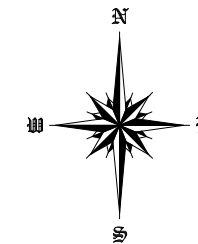
BASIS OF BEARINGS: As shown on the official BLM plat, approved July 22, 2010, referenced to the true meridian.

Meaning and intending to describe the parcel derived from the Official Bureau of Land Management plats and field notes of the Dependent Resurvey and Survey of the Arkansas River Bed approved July 22, 2010. The purpose of this description is to describe the wet bed areas as shown on the plat. This is exclusively for use by the Arkansas Riverbed Authority and the Choctaw, Chickasaw and Cherokee Nations of Oklahoma. Accuracy and acreages defined by the original survey documentation.

Note: See Exhibit "A" enlargement of the official Bureau of Land Management Plat attached.



LOCATION MAP



LEGEND

These standard symbols may be found in the drawing.

- CALCULATED AREA LIMITS
- ▲ CALCULATED CORNER



SURVEYOR'S SPECIAL NOTE:

1. MEANING AND INTENDING TO DESCRIBE THE PARCEL DERIVED FROM THE OFFICIAL BUREAU OF LAND MANAGEMENT PLATS AND FIELDNOTES OF THE DEPENDENT RESURVEY AND SURVEY OF THE ARKANSAS RIVER BED APPROVED JULY 22, 2010. THE PURPOSE OF THIS DESCRIPTION IS TO DESCRIBE THE WET BED AREAS AS SHOWN ON THE PLAT. THIS IS EXCLUSIVELY FOR USE BY THE ARKANSAS RIVERBED AUTHORITY AND THE CHOCTAW, CHICKASAW AND CHEROKEE NATIONS OF OKLAHOMA. ACCURACY AND ACREAGES DEFINED BY THE ORIGINAL SURVEY DOCUMENTATION.

2. THIS IS NOT A BOUNDARY SURVEY AND IS NOT INTENDED TO BE USED AS A BOUNDARY SURVEY. NO FIELD WORK HAS BEEN DONE AND NO MONUMENTS HAVE BEEN VERIFIED.

LEGAL DESCRIPTION:

A parcel of land situated in section 11 of township 10 north, range 24 east, Indian Meridian, LeFlore and Sequoyah County, Oklahoma, being the wet bed acres of section 11, and being more particularly described as follows:

BEGINNING at the angle point of sections 11 and 12, at the digitized 2003 left bank ordinary high-water mark, upstream along said mark in section 11;

THENCE, upstream along aforesaid mark, N. 56°50' W., 176.88 feet;

THENCE, N. 19°02' W., 196.02 feet;

THENCE, N. 26°43' W., 130.02 feet;

THENCE, N. 63°01' W., 471.90 feet;

THENCE, N. 84°25' W., 113.52 feet;

THENCE, N. 60°25' W., 110.88 feet;

THENCE, N. 87°52' W., 100.98 feet;

THENCE, S. 28°35' W., 36.96 feet;

THENCE, N. 59°32' W., 203.28 feet;

THENCE, N. 60°11' W., 59.40 feet;

THENCE, N. 63°29' W., 1087.68 feet;

THENCE, N. 16°04' W., 69.96 feet;

THENCE, N. 62°26' W., 266.64 feet;

THENCE, S. 32°14' W., 60.06 feet;

THENCE, N. 73°00' W., 63.36 feet;

THENCE, N. 32°14' W., 294.36 feet;

THENCE, S. 74°04' W., 67.32 feet;

THENCE, N. 56°09' W., 157.08 feet;

THENCE, N. 79°36' W., 1032.90 feet to the Adjusted 1897 Left Bank Record Meanders;

THENCE, N. 33°57' W., 104.94 feet;

THENCE, N. 72°14' W., 229.02 feet;

THENCE, S. 68°42' W., 96.36 feet;

THENCE, N. 80°34' W., 258.72 feet;

THENCE, N. 77°15' W., 603.24 feet;

THENCE, N. 85°44' W., 137.28 feet to the angle point of sections 10 and 11 at the digitized 2003 left bank ordinary high-water mark;

THENCE, S. 00°01' E., 700.92 feet to the angle point of sections 10 and 11 at the digitized 2003 right bank ordinary high-water mark, downstream along said mark in section 11;

THENCE, downstream along aforesaid mark, S. 55°02' E., 231.66 feet;

THENCE, S. 68°57' E., 1759.56 feet;

THENCE, S. 63°35' E., 983.40 feet;

THENCE, S. 65°39' E., 537.24 feet to the Adjusted 1897 Left Bank Record Meanders;

THENCE, S. 61°10' E., 172.56 feet;

THENCE, S. 57°53' E., 712.80 feet;

THENCE, S. 57°59' E., 156.42 feet;

THENCE, S. 73°16' E., 287.76 feet;

THENCE, S. 62°52' E., 536.58 feet;

THENCE, S. 59°01' E., 274.56 feet;

THENCE, S. 51°14' E., 255.42 feet to the angle point of section 11 and 12 at the digitized 2003 right bank ordinary high-water mark;

THENCE, N. 0°13' E., along the line between sections 11 and 12, 1205.16 feet to the **POINT OF BEGINNING**, containing +/- 148.65 acres.

BASIS OF BEARINGS: As shown on the official BLM plat, approved July 22, 2010, referenced to the true meridian.

Meaning and intending to describe the parcel derived from the Official Bureau of Land Management plats and field notes of the Dependent Resurvey and Survey of the Arkansas River Bed approved July 22, 2010. The purpose of this description is to describe the wet bed areas as shown on the plat. This is exclusively for use by the Arkansas Riverbed Authority and the Choctaw, Chickasaw and Cherokee Nations of Oklahoma. Accuracy and acreages defined by the original survey documentation.

Note: See Exhibit "A" enlargement of the official Bureau of Land Management Plat attached.

David L. Page, Jr.
DAVID L. PAGE, JR. P.L.S. #1566

4-30-21
DATE SIGNED

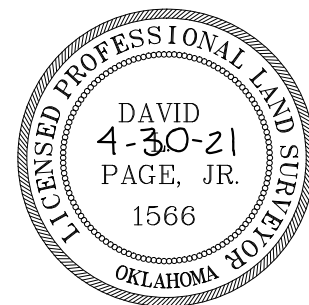


EXHIBIT "A"

~BASIS OF BEARING~
As shown on the official BLM plat, approved July 22, 2010, referenced to the true meridian.

LEGAL DESCRIPTION EXHIBIT

SECTION 10, TOWNSHIP 10 NORTH, RANGE 24 EAST
LEFLORE AND SEQUOYAH COUNTY, STATE OF OKLAHOMA.

LEGAL DESCRIPTION:

A parcel of land situated in section 10 of township 10 north, range 24 east, Indian Meridian, LeFlore and Sequoyah County, Oklahoma, being the wet bed acres of section 10, and being more particularly described as follows:

BEGINNING at the angle point of sections 10 and 11, at the digitized 2003 left bank ordinary high-water mark, upstream along said mark in section 10;

THENCE, upstream along aforesaid mark, N. 63°39' W., 106.92 feet;

THENCE, N. 63°39' W., 298.98 feet to the Boundary Historic Riverbed;

THENCE, N. 86°56' W., 490.38 feet;

THENCE, S. 63°44' W., 112.20 feet;

THENCE, N. 74°23' W., 386.10 feet;

THENCE, N. 77°55' W., 552.42 feet;

THENCE, S. 84°20' W., 236.94 feet;

THENCE, N. 83°47' W., 212.52 feet;

THENCE, N. 75°10' W., 198.66 feet;

THENCE, N. 68°35' W., 157.08 feet;

THENCE, N. 70°45' W., 196.68 feet;

THENCE, S. 75°55' W., 498.96 feet;

THENCE, S. 31°22' W., 120.78 feet;

THENCE, S. 84°35' W., 599.94 feet;

THENCE, S. 79°48' W., 568.92 feet;

THENCE, S. 76°48' W., 555.06 feet;

THENCE, S. 72°47' W., 239.58 feet to the angle point of section 9 and 10 at the digitized 2003 left bank ordinary high-water mark;

THENCE, S. 00°06' E., along the line between sections 9 and 10, 1070.52 feet to the angle point of sections 9 and 10 at the digitized 2003 right bank ordinary high-water mark, downstream along said mark in section 10;

THENCE, downstream along aforesaid mark, N. 68°49' E., 128.70 feet;

THENCE, N. 76°08' E., 643.50 feet;

THENCE, N. 77°19' E., 601.26 feet;

THENCE, N. 78°05' E., 711.48 feet;

THENCE, N. 79°30' E., 511.50 feet;

THENCE, N. 74°39' E., 122.76 feet;

THENCE, S. 87°57' E., 369.60 feet;

THENCE, S. 84°05' E., 877.80 feet;

THENCE, S. 82°24' E., 524.04 feet;

THENCE, S. 79°52' E., 395.34 feet;

THENCE, S. 84°30' E., 287.76 feet;

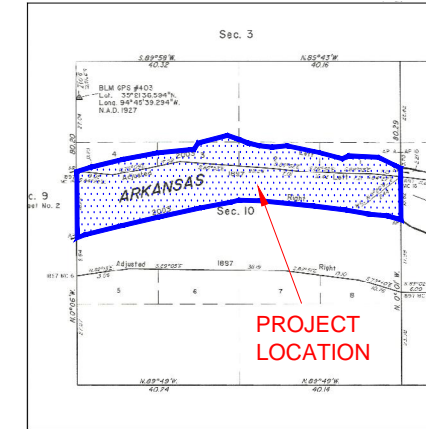
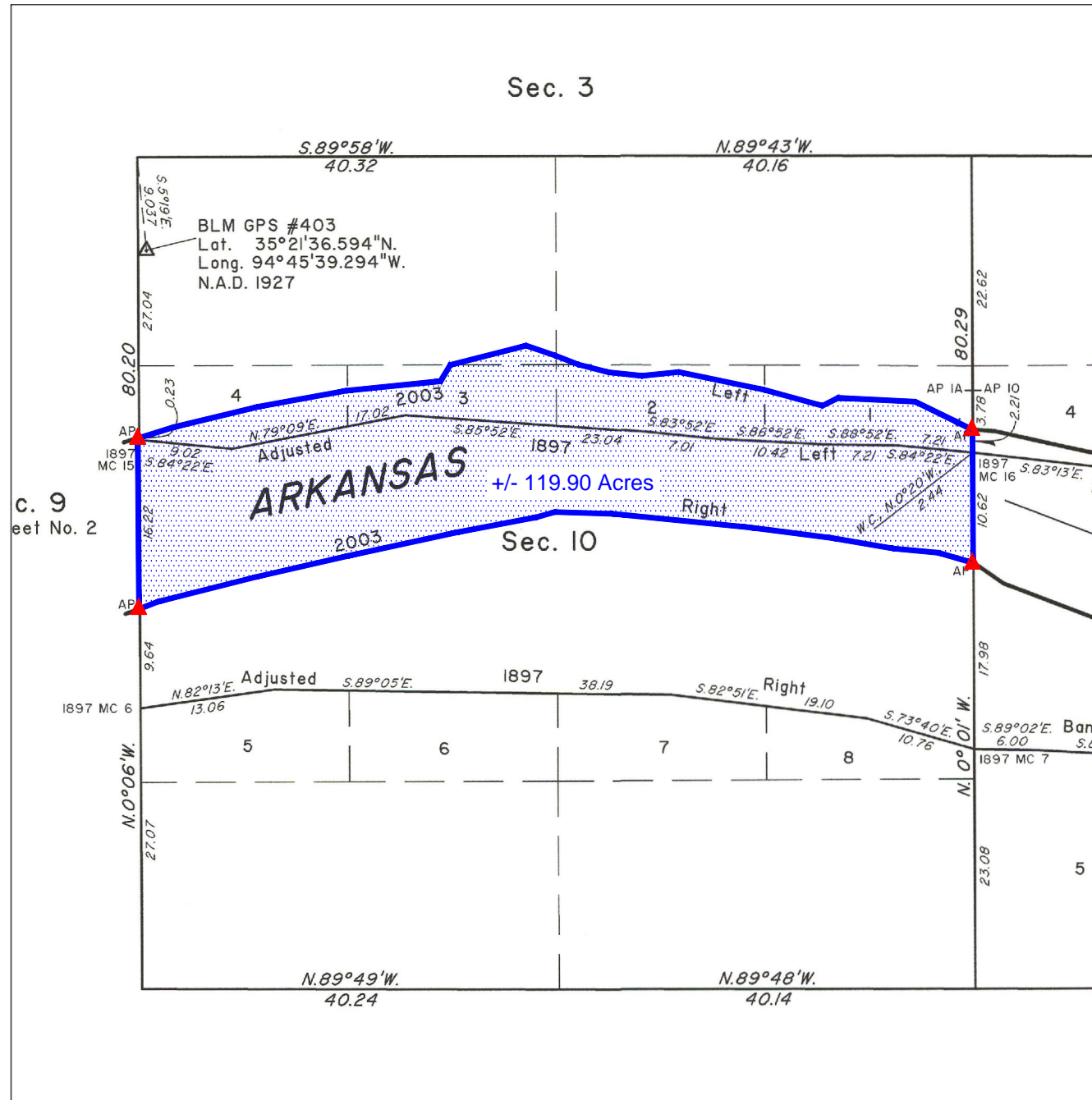
THENCE, S. 73°34' E., 231.00 feet to the angle point of section 10 and 11 at the digitized 2003 right bank ordinary high-water mark;

THENCE, N. 00°01' W., along the line between sections 10 and 11, 700.92 feet to the **POINT OF BEGINNING**, containing +/- 119.90 acres.

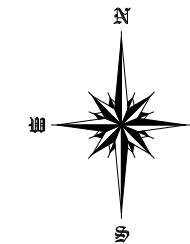
BASIS OF BEARINGS: As shown on the official BLM plat, approved July 22, 2010, referenced to the true meridian.

Meaning and intending to describe the parcel derived from the Official Bureau of Land Management plats and field notes of the Dependent Resurvey and Survey of the Arkansas River Bed approved July 22, 2010. The purpose of this description is to describe the wet bed areas as shown on the plat. This is exclusively for use by the Arkansas Riverbed Authority and the Choctaw, Chickasaw and Cherokee Nations of Oklahoma. Accuracy and acreages defined by the original survey documentation.

Note: See Exhibit "A" enlargement of the official Bureau of Land Management Plat attached.



LOCATION MAP



LEGEND

These standard symbols may be found in the drawing.

- CALCULATED AREA LIMITS
- ▲ CALCULATED CORNER



SURVEYOR'S SPECIAL NOTE:

1. MEANING AND INTENDING TO DESCRIBE THE PARCEL DERIVED FROM THE OFFICIAL BUREAU OF LAND MANAGEMENT PLATS AND FIELDNOTES OF THE DEPENDENT RESURVEY AND SURVEY OF THE ARKANSAS RIVER BED APPROVED JULY 22, 2010. THE PURPOSE OF THIS DESCRIPTION IS TO DESCRIBE THE WET BED AREAS AS SHOWN ON THE PLAT. THIS IS EXCLUSIVELY FOR USE BY THE ARKANSAS RIVERBED AUTHORITY AND THE CHOCTAW, CHICKASAW AND CHEROKEE NATIONS OF OKLAHOMA. ACCURACY AND ACRES DEFINED BY THE ORIGINAL SURVEY DOCUMENTATION.

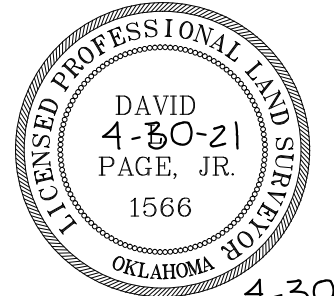
2. THIS IS NOT A BOUNDARY SURVEY AND IS NOT INTENDED TO BE USED AS A BOUNDARY SURVEY. NO FIELD WORK HAS BEEN DONE AND NO MONUMENTS HAVE BEEN VERIFIED.



124 SOUTH 8th AVENUE
DURANT, OKLAHOMA 74701
(580) 920-9101 OR (580) 239-0176
FAX (580) 920-9121

DAVID L. PAGE JR. © 2021
PROFESSIONAL LAND SURVEYOR #1566
C.A. # 1991, EXPIRES 6-30-2021

Surveyor's Seal



4-30-21
DATE SIGNED

David L. Page Jr.
DAVID L. PAGE, JR. P.L.S. #1566

LOCATION
SECTION 12
TOWNSHIP 10 NORTH, RANGE 24 EAST
LEFLORE AND SEQUOYAH COUNTY

GENERAL NOTES

- SUBJECT TO EASEMENTS AND/OR RIGHTS-OF-WAY, EITHER RECORDED, OR IMPLIED, THEREOF.
- NO UTILITIES OF ANY KIND HAVE BEEN LOCATED EXCEPT THOSE SHOWN ON THE ABOVE PLAT
- CONTROLLING CORNERS FOR THIS LEGAL DESCRIPTION ARE AS INDICATED ON THE LOCATION MAP
- THIS IS NOT A VALID LEGAL DESCRIPTION WITHOUT THE SURVEYORS ORIGINAL SIGNATURE AND ORIGINAL SEAL
- PORTIONS OF THIS PLAT ARE IN COLOR, PHOTO AND ELECTRONIC COPIES OF THIS PLAT MAKE IT INVALID AND MAY ALTER ITS MEANING
- THIS EXHIBIT AND LEGAL DESCRIPTION MEETS THE OKLAHOMA MINIMUM STANDARDS FOR THE PRACTICE OF LAND SURVEYING AS ADOPTED BY THE OKLAHOMA STATE BOARD OF LICENSURE FOR PROFESSIONAL ENGINEERS AND LAND SURVEYORS.

NO.	REVISION/ISSUE	DATE

SURVEY INFORMATION	
FIELD WORK PERFORMED:	NONE
DATE OF LAST SITE VISIT:	NONE
EXHIBIT COMPLETED:	4-30-21

Project Name and Address
ARKANSAS RIVER EXHIBIT
SECTION 12, TOWNSHIP 10 NORTH, RANGE 24 EAST
LEFLORE AND SEQUOYAH COUNTY, STATE OF OKLAHOMA.

SCALE
1" = 1000'

SHEET NO.
1 OF 1

DATE
4-30-21

David L. Page, Jr. (4/30/21)
LS #1566

LEGAL DESCRIPTION:

A parcel of land situated in section 10 of township 10 north, range 24 east, Indian Meridian, LeFlore and Sequoyah County, Oklahoma, being the wet bed acres of section 10, and being more particularly described as follows:

BEGINNING at the angle point of sections 10 and 11, at the digitized 2003 left bank ordinary high-water mark, upstream along said mark in section 10;

THENCE, upstream along aforesaid mark, N. 63°39' W., 106.92 feet;

THENCE, N. 63°39' W., 298.98 feet to the Boundary Historic Riverbed;

THENCE, N. 86°56' W., 490.38 feet;

THENCE, S. 63°44' W., 112.20 feet;

THENCE, N. 74°23' W., 386.10 feet;

THENCE, N. 77°55' W., 552.42 feet;

THENCE, S. 84°20' W., 236.94 feet;

THENCE, N. 83°47' W., 212.52 feet;

THENCE, N. 75°10' W., 198.66 feet;

THENCE, N. 68°35' W., 157.08 feet;

THENCE, N. 70°45' W., 196.68 feet;

THENCE, S. 75°55' W., 498.96 feet;

THENCE, S. 31°22' W., 120.78 feet;

THENCE, S. 84°35' W., 599.94 feet;

THENCE, S. 79°48' W., 568.92 feet;

THENCE, S. 76°48' W., 555.06 feet;

THENCE, S. 72°47' W., 239.58 feet to the angle point of section 9 and 10 at the digitized 2003 left bank ordinary high-water mark;

THENCE, S. 00°06' E., along the line between sections 9 and 10, 1070.52 feet to the angle point of sections 9 and 10 at the digitized 2003 right bank ordinary high-water mark, downstream along said mark in section 10;

THENCE, downstream along aforesaid mark, N. 68°49' E., 128.70 feet;

THENCE, N. 76°08' E., 643.50 feet;

THENCE, N. 77°19' E., 601.26 feet;

THENCE, N. 78°05' E., 711.48 feet;

THENCE, N. 79°30' E., 511.50 feet;

THENCE, N. 74°39' E., 122.76 feet;

THENCE, S. 87°57' E., 369.60 feet;

THENCE, S. 84°05' E., 877.80 feet;

THENCE, S. 82°24' E., 524.04 feet;

THENCE, S. 79°52' E., 395.34 feet;

THENCE, S. 84°30' E., 287.76 feet;

THENCE, S. 73°34' E., 231.00 feet to the angle point of section 10 and 11 at the digitized 2003 right bank ordinary high-water mark;

THENCE, N. 00°01' W., along the line between sections 10 and 11, 700.92 feet to the **POINT OF BEGINNING**, containing +/- 119.90 acres.

BASIS OF BEARINGS: As shown on the official BLM plat, approved July 22, 2010, referenced to the true meridian.

Meaning and intending to describe the parcel derived from the Official Bureau of Land Management plats and field notes of the Dependent Resurvey and Survey of the Arkansas River Bed approved July 22, 2010. The purpose of this description is to describe the wet bed areas as shown on the plat. This is exclusively for use by the Arkansas Riverbed Authority and the Choctaw, Chickasaw and Cherokee Nations of Oklahoma. Accuracy and acreages defined by the original survey documentation.

Note: See Exhibit "A" enlargement of the official Bureau of Land Management Plat attached.

David L. Page
DAVID L. PAGE, JR. P.L.S. #1566

4-30-21
DATE SIGNED



EXHIBIT "A"

~BASIS OF BEARING~
As shown on the official BLM plat, approved July 22, 2010, referenced to the true meridian.

LEGAL DESCRIPTION EXHIBIT

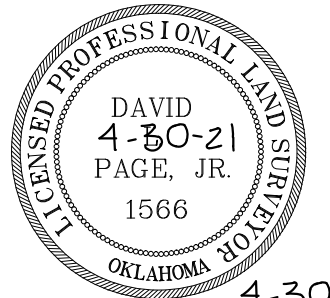
SECTION 9, TOWNSHIP 10 NORTH, RANGE 24 EAST
LEFLORE AND SEQUOYAH COUNTY, STATE OF OKLAHOMA.



124 SOUTH 8th AVENUE
DURANT, OKLAHOMA 74701
(580) 920-9101 OR (580) 239-0176
FAX (580) 920-9121

DAVID L. PAGE JR. © 2021
PROFESSIONAL LAND SURVEYOR #1566
C.A. # 1991, EXPIRES 6-30-2021

Surveyor's Seal



4-30-21
DATE SIGNED

David L. Page Jr.
DAVID L. PAGE, JR. P.L.S. #1566

LOCATION
SECTION 12
TOWNSHIP 10 NORTH, RANGE 24 EAST
LEFLORE AND SEQUOYAH COUNTY

GENERAL NOTES

SUBJECT TO EASEMENTS AND/OR RIGHTS-OF-WAY, EITHER RECORDED, OR IMPLIED, THEREOF.
NO UTILITIES OF ANY KIND HAVE BEEN LOCATED EXCEPT THOSE SHOWN ON THE ABOVE PLAT
CONTROLLING CORNERS FOR THIS LEGAL DESCRIPTION ARE AS INDICATED ON THE LOCATION MAP
THIS IS NOT A VALID LEGAL DESCRIPTION WITHOUT THE SURVEYORS ORIGINAL SIGNATURE AND ORIGINAL SEAL
PORTIONS OF THIS PLAT ARE IN COLOR, PHOTO AND ELECTRONIC COPIES OF THIS PLAT MAKE IT INVALID AND MAY ALTER ITS MEANING
THIS EXHIBIT AND LEGAL DESCRIPTION MEETS THE OKLAHOMA MINIMUM STANDARDS FOR THE PRACTICE OF LAND SURVEYING AS ADOPTED BY THE OKLAHOMA STATE BOARD OF LICENSURE FOR PROFESSIONAL ENGINEERS AND LAND SURVEYORS.

NO.	REVISION/ISSUE	DATE

SURVEY INFORMATION
FIELD WORK PERFORMED: NONE
DATE OF LAST SITE VISIT: NONE
EXHIBIT COMPLETED: 4-30-21

Project Name and Address
ARKANSAS RIVER EXHIBIT
SECTION 12, TOWNSHIP 10 NORTH, RANGE 24 EAST
LEFLORE AND SEQUOYAH COUNTY, STATE OF OKLAHOMA.

SCALE
1" = 1000'

SHEET NO.
1 OF 1

DATE
4-30-21

LEGAL DESCRIPTION:

A parcel of land situated in section 9 of township 10 north, range 24 east, Indian Meridian, LeFlore and Sequoyah County, Oklahoma, being the wet bed acres of section 9, and being more particularly described as follows:

BEGINNING at the angle point of sections 9 and 10, at the digitized 2003 left bank ordinary high-water mark, upstream along said mark in section 9;

THENCE, upstream along aforesaid mark, S. 72°47' W., 429.66 feet;

THENCE, S. 68°05' W., 814.44 feet;

THENCE, S. 65°21' W., 168.30 feet;

THENCE, S. 65°21' W., 308.88 feet;

THENCE, S. 61°30' W., 611.82 feet;

THENCE, S. 59°32' W., 285.12 feet to the Adjusted 1897 Left Bank Record Meanders;

THENCE, S. 59°32' W., 218.46 feet;

THENCE, S. 57°04' W., 582.78 feet;

THENCE, S. 54°15' W., 860.64 feet;

THENCE, S. 48°40' W., 350.46 feet;

THENCE, S. 55°12' W., 502.26 feet to the Adjusted 1897 Right Bank Record Meanders;

THENCE, S. 55°12' W., 124.74 feet;

THENCE, S. 28°09' W., 64.68 feet;

THENCE, S. 26°47' E., 164.34 feet;

THENCE, S. 54°02' W., 830.28 feet to the Robert S. Kerr Dam at the digitized 2003 right bank ordinary high-water mark ;

THENCE, S. 35°22' E., along the Robert S. Kerr Dam, 305.73 to the angle point of sections 9 and 16 at the Robert S. Kerr Dam;

THENCE, N. 89°47' E., along the line between sections 9 and 16, 1829.52 feet to the angle point between sections 9 and 16 at the digitized 2003 right bank ordinary high-water mark, downstream along said mark in section 9;

THENCE, downstream along aforesaid mark, N. 18°54' E., 282.48 feet;

THENCE, N. 26°48' E., 277.86 feet;

THENCE, N. 32°09' E., 335.28 feet;

THENCE, N. 47°17' E., 176.88 feet;

THENCE, N. 51°05' E., 345.18 feet;

THENCE, N. 50°51' E., 300.30 feet;

THENCE, N. 54°55' E., 543.84 feet;

THENCE, N. 59°33' E., 1.32 feet to the Adjusted 1897 Right Bank Record Meanders;

THENCE, N. 59°33' E., 367.62 feet;

THENCE, N. 63°52' E., 675.18 feet;

THENCE, N. 67°19' E., 558.36 feet;

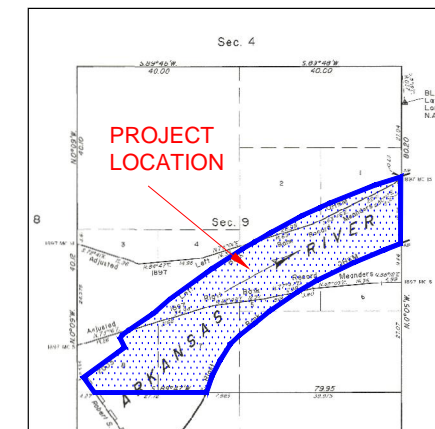
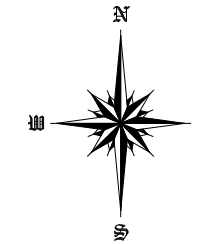
THENCE, N. 68°49' E., 268.62 feet to the angle point of section 9 and 10 at the digitized 2003 left bank ordinary high-water mark;

THENCE, N. 00°06' W., along the line between sections 9 and 10, 1085.70 feet to the **POINT OF BEGINNING**, containing +/- 143.41 acres.

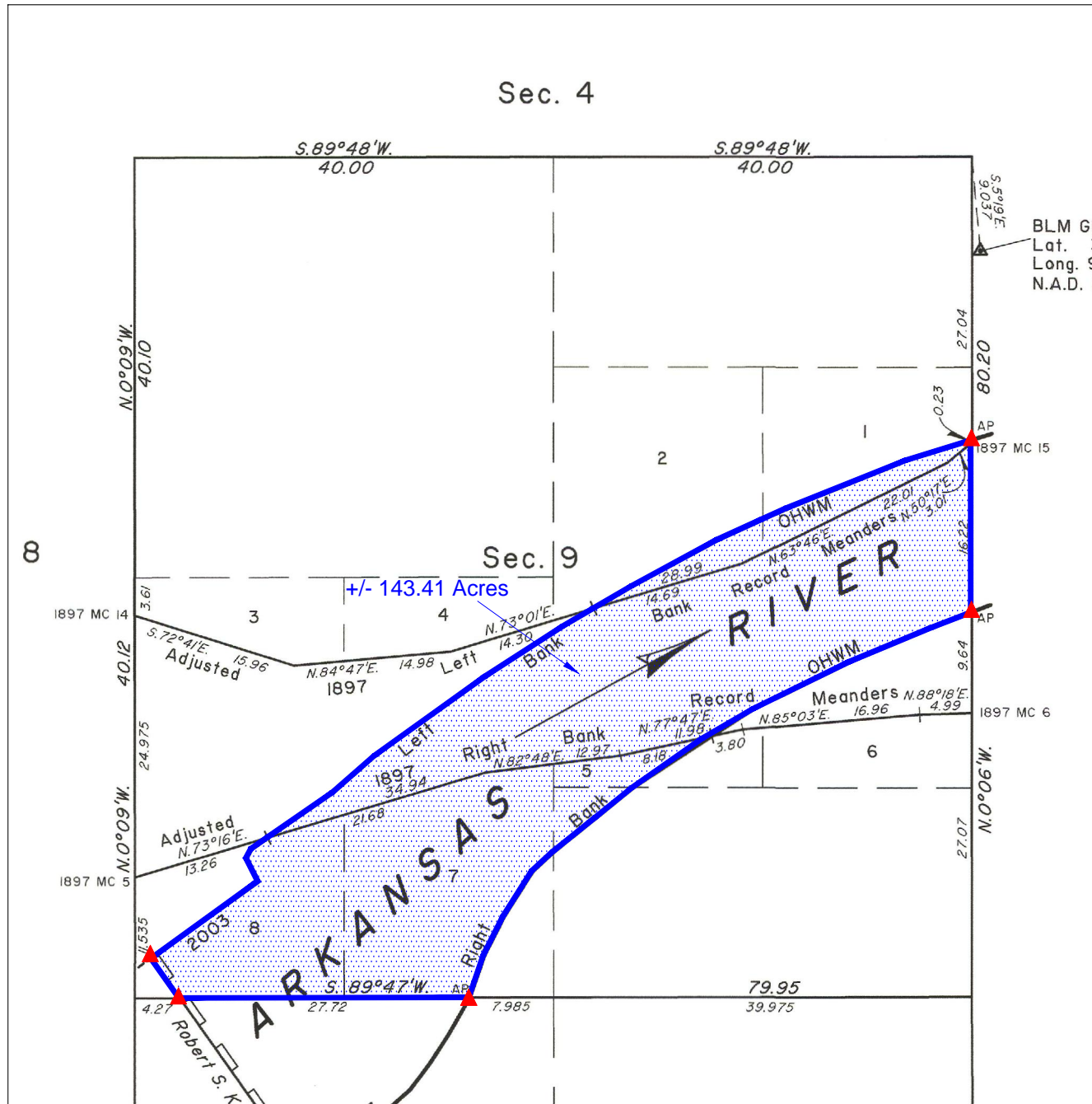
BASIS OF BEARINGS: As shown on the official BLM plat, approved July 22, 2010, referenced to the true meridian.

Meaning and intending to describe the parcel derived from the Official Bureau of Land Management plats and field notes of the Dependent Resurvey and Survey of the Arkansas River Bed approved July 22, 2010. The purpose of this description is to describe the wet bed areas as shown on the plat. This is exclusively for use by the Arkansas Riverbed Authority and the Choctaw, Chickasaw and Cherokee Nations of Oklahoma. Accuracy and acreages defined by the original survey documentation.

Note: See Exhibit "A" enlargement of the official Bureau of Land Management Plat attached.



LOCATION MAP



LEGEND

These standard symbols may be found in the drawing.

- CALCULATED AREA LIMITS
- ▲ CALCULATED CORNER



SURVEYOR'S SPECIAL NOTE:

1. MEANING AND INTENDING TO DESCRIBE THE PARCEL DERIVED FROM THE OFFICIAL BUREAU OF LAND MANAGEMENT PLATS AND FIELDNOTES OF THE DEPENDENT RESURVEY AND SURVEY OF THE ARKANSAS RIVER BED APPROVED JULY 22, 2010. THE PURPOSE OF THIS DESCRIPTION IS TO DESCRIBE THE WET BED AREAS AS SHOWN ON THE PLAT. THIS IS EXCLUSIVELY FOR USE BY THE ARKANSAS RIVERBED AUTHORITY AND THE CHOCTAW, CHICKASAW AND CHEROKEE NATIONS OF OKLAHOMA. ACCURACY AND ACREAGES DEFINED BY THE ORIGINAL SURVEY DOCUMENTATION.

2. THIS IS NOT A BOUNDARY SURVEY AND IS NOT INTENDED TO BE USED AS A BOUNDARY SURVEY. NO FIELD WORK HAS BEEN DONE AND NO MONUMENTS HAVE BEEN VERIFIED.

David L. Page, Jr. (4/30/21)
LS #1566

LEGAL DESCRIPTION:

A parcel of land situated in section 9 of township 10 north, range 24 east, Indian Meridian, LeFlore and Sequoyah County, Oklahoma, being the wet bed acres of section 9, and being more particularly described as follows:

BEGINNING at the angle point of sections 9 and 10, at the digitized 2003 left bank ordinary high-water mark, upstream along said mark in section 9;

THENCE, upstream along aforesaid mark, S. 72°47' W., 429.66 feet;

THENCE, S. 68°05' W., 814.44 feet;

THENCE, S. 65°21' W., 168.30 feet;

THENCE, S. 65°21' W., 308.88 feet;

THENCE, S. 61°30' W., 611.82 feet;

THENCE, S. 59°32' W., 285.12 feet to the Adjusted 1897 Left Bank Record Meanders;

THENCE, S. 59°32' W., 218.46 feet;

THENCE, S. 57°04' W., 582.78 feet;

THENCE, S. 54°15' W., 860.64 feet;

THENCE, S. 48°40' W., 350.46 feet;

THENCE, S. 55°12' W., 502.26 feet to the Adjusted 1897 Right Bank Record Meanders;

THENCE, S. 55°12' W., 124.74 feet;

THENCE, S. 28°09' W., 64.68 feet;

THENCE, S. 26°47' E., 164.34 feet;

THENCE, S. 54°02' W., 830.28 feet to the Robert S. Kerr Dam at the digitized 2003 right bank ordinary high-water mark ;

THENCE, S. 35°22' E., along the Robert S. Kerr Dam, 305.73 to the angle point of sections 9 and 16 at the Robert S. Kerr Dam;

THENCE, N. 89°47' E., along the line between sections 9 and 16, 1829.52 feet to the angle point between sections 9 and 16 at the digitized 2003 right bank ordinary high-water mark, downstream along said mark in section 9;

THENCE, downstream along aforesaid mark, N. 18°54' E., 282.48 feet;

THENCE, N. 26°48' E., 277.86 feet;

THENCE, N. 32°09' E., 335.28 feet;

THENCE, N. 47°17' E., 176.88 feet;

THENCE, N. 51°05' E., 345.18 feet;

THENCE, N. 50°51' E., 300.30 feet;

THENCE, N. 54°55' E., 543.84 feet;

THENCE, N. 59°33' E., 1.32 feet to the Adjusted 1897 Right Bank Record Meanders;

THENCE, N. 59°33' E., 367.62 feet;

THENCE, N. 63°52' E., 675.18 feet;

THENCE, N. 67°19' E., 558.36 feet;

THENCE, N. 68°49' E., 268.62 feet to the angle point of section 9 and 10 at the digitized 2003 left bank ordinary high-water mark;

THENCE, N. 00°06' W., along the line between sections 9 and 10, 1085.70 feet to the **POINT OF BEGINNING**, containing +/- 143.41 acres.

BASIS OF BEARINGS: As shown on the official BLM plat, approved July 22, 2010, referenced to the true meridian.

Meaning and intending to describe the parcel derived from the Official Bureau of Land Management plats and field notes of the Dependent Resurvey and Survey of the Arkansas River Bed approved July 22, 2010. The purpose of this description is to describe the wet bed areas as shown on the plat. This is exclusively for use by the Arkansas Riverbed Authority and the Choctaw, Chickasaw and Cherokee Nations of Oklahoma. Accuracy and acreages defined by the original survey documentation.

Note: See Exhibit "A" enlargement of the official Bureau of Land Management Plat attached.

David L. Page
DAVID L. PAGE, JR. P.L.S. #1566

4-30-21
DATE SIGNED



EXHIBIT "A"

~BASIS OF BEARING~
As shown on the official BLM plat, approved July 22, 2010, referenced to the true meridian.

LEGAL DESCRIPTION EXHIBIT

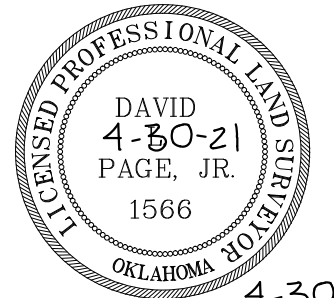
SECTION 16, TOWNSHIP 10 NORTH, RANGE 24 EAST
LEFLORE AND SEQUOYAH COUNTY, STATE OF OKLAHOMA.



124 SOUTH 8th AVENUE
DURANT, OKLAHOMA 74701
(580) 920-9101 OR (580) 239-0176
FAX (580) 920-9121

DAVID L. PAGE JR. © 2021
PROFESSIONAL LAND SURVEYOR #1566
C.A. # 1991, EXPIRES 6-30-2021

Surveyor's Seal



4-30-21
DATE SIGNED

David L. Page Jr.
DAVID L. PAGE, JR. P.L.S. #1566

LOCATION
SECTION 12
TOWNSHIP 10 NORTH, RANGE 24 EAST
LEFLORE AND SEQUOYAH COUNTY

GENERAL NOTES

SUBJECT TO EASEMENTS AND/OR RIGHTS-OF-WAY, EITHER RECORDED, OR IMPLIED, THEREOF.
NO UTILITIES OF ANY KIND HAVE BEEN LOCATED EXCEPT THOSE SHOWN ON THE ABOVE PLAT
CONTROLLING CORNERS FOR THIS LEGAL DESCRIPTION ARE AS INDICATED ON THE LOCATION MAP
THIS IS NOT A VALID LEGAL DESCRIPTION WITHOUT THE SURVEYORS ORIGINAL SIGNATURE AND ORIGINAL SEAL
PORTIONS OF THIS PLAT ARE IN COLOR, PHOTO AND ELECTRONIC COPIES OF THIS PLAT MAKE IT INVALID AND MAY ALTER ITS MEANING
THIS EXHIBIT AND LEGAL DESCRIPTION MEETS THE OKLAHOMA MINIMUM STANDARDS FOR THE PRACTICE OF LAND SURVEYING AS ADOPTED BY THE OKLAHOMA STATE BOARD OF LICENSURE FOR PROFESSIONAL ENGINEERS AND LAND SURVEYORS.

NO.	REVISION/ISSUE	DATE

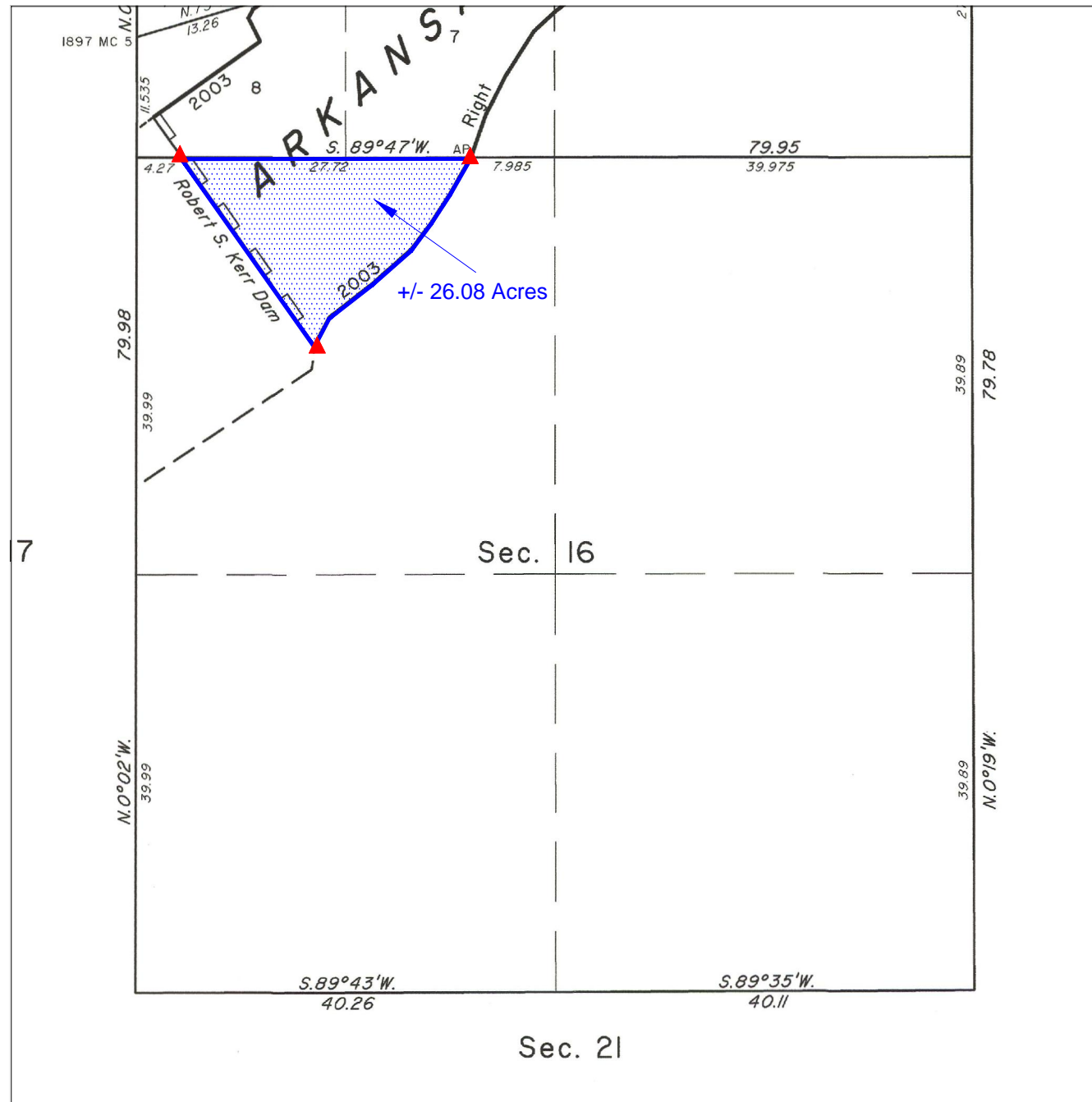
SURVEY INFORMATION	
FIELD WORK PERFORMED:	NONE
DATE OF LAST SITE VISIT:	NONE
EXHIBIT COMPLETED:	4-30-21

Project Name and Address
ARKANSAS RIVER EXHIBIT
SECTION 12, TOWNSHIP 10 NORTH, RANGE 24 EAST
LEFLORE AND SEQUOYAH COUNTY, STATE OF OKLAHOMA.

SCALE
1" = 1000'

SHEET NO.
1 OF 1

DATE
4-30-21



LEGAL DESCRIPTION:

A parcel of land situated in section 16 of township 10 north, range 24 east, Indian Meridian, LeFlore and Sequoyah County, Oklahoma, being the wet bed acres of section 16, and being more particularly described as follows:

BEGINNING at the angle point of sections 9 and 16, at the digitized 2003 right bank ordinary high-water mark, upstream along said mark in section 16;

THENCE, upstream along aforesaid mark, S. 29°36' W., 269.94 feet;

THENCE, S. 32°49' W., 218.46 feet;

THENCE, S. 36°48' W., 207.24 feet;

THENCE, S. 48°30' W., 328.68 feet;

THENCE, S. 51°53' W., 343.20 feet;

THENCE, S. 27°44' W., 202.62 feet to the Robert S. Kerr Dam at the digitized 2003 right bank ordinary high-water mark;

THENCE, N. 35°22' W., along the Robert S. Kerr Dam, 1455.42 feet to the angle point of section 9 and 16 at the Robert S. Kerr dam;

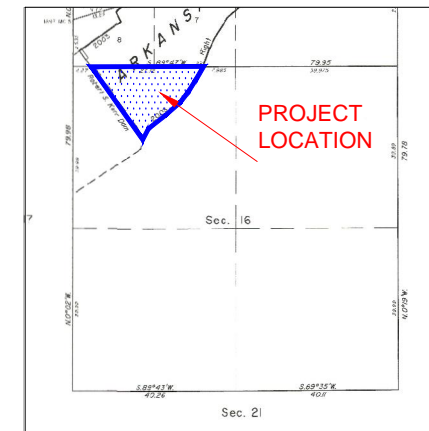
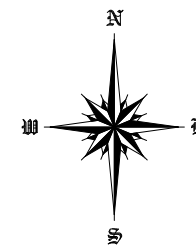
THENCE, N. 89°47' E., along the line between sections 9 and 16, 1829.52 feet to the **POINT OF BEGINNING**, containing +/- 26.08 acres.

BASIS OF BEARINGS: As shown on the official BLM plat, approved July 22, 2010, referenced to the true meridian.

Meaning and intending to describe the parcel derived from the Official Bureau of Land Management plats and field notes of the Dependent Resurvey and Survey of the Arkansas River Bed approved July 22, 2010. The purpose of this description is to describe the wet bed areas as shown on the plat. This is exclusively for use by the Arkansas Riverbed Authority and the Choctaw, Chickasaw and Cherokee Nations of Oklahoma. Accuracy and acreages defined by the original survey documentation.

Note: See Exhibit "A" enlargement of the official Bureau of Land Management Plat attached.

David L. Page, Jr. (4/30/21)
LS #1566



LOCATION MAP

LEGEND

These standard symbols may be found in the drawing.

- CALCULATED AREA LIMITS
- ▲ CALCULATED CORNER



SURVEYOR'S SPECIAL NOTE:

1. MEANING AND INTENDING TO DESCRIBE THE PARCEL DERIVED FROM THE OFFICIAL BUREAU OF LAND MANAGEMENT PLATS AND FIELDNOTES OF THE DEPENDENT RESURVEY AND SURVEY OF THE ARKANSAS RIVER BED APPROVED JULY 22, 2010. THE PURPOSE OF THIS DESCRIPTION IS TO DESCRIBE THE WET BED AREAS AS SHOWN ON THE PLAT. THIS IS EXCLUSIVELY FOR USE BY THE ARKANSAS RIVERBED AUTHORITY AND THE CHOCTAW, CHICKASAW AND CHEROKEE NATIONS OF OKLAHOMA. ACCURACY AND ACREAGES DEFINED BY THE ORIGINAL SURVEY DOCUMENTATION.

2. THIS IS NOT A BOUNDARY SURVEY AND IS NOT INTENDED TO BE USED AS A BOUNDARY SURVEY. NO FIELD WORK HAS BEEN DONE AND NO MONUMENTS HAVE BEEN VERIFIED.

LEGAL DESCRIPTION:

A parcel of land situated in section 16 of township 10 north, range 24 east, Indian Meridian, LeFlore and Sequoyah County, Oklahoma, being the wet bed acres of section 16, and being more particularly described as follows:

BEGINNING at the angle point of sections 9 and 16, at the digitized 2003 right bank ordinary high-water mark, upstream along said mark in section 16;

THENCE, upstream along aforesaid mark, S. 29°36' W., 269.94 feet;

THENCE, S. 32°49' W., 218.46 feet;

THENCE, S. 36°48' W., 207.24 feet;

THENCE, S. 48°30' W., 328.68 feet;

THENCE, S. 51°53' W., 343.20 feet;

THENCE, S. 27°44' W., 202.62 feet to the Robert S. Kerr Dam at the digitized 2003 right bank ordinary high-water mark;

THENCE, N. 35°22' W., along the Robert S. Kerr Dam, 1455.42 feet to the angle point of section 9 and 16 at the Robert S. Kerr dam;

THENCE, N. 89°47' E., along the line between sections 9 and 16, 1829.52 feet to the **POINT OF BEGINNING**, containing +/- 26.08 acres.

BASIS OF BEARINGS: As shown on the official BLM plat, approved July 22, 2010, referenced to the true meridian.

Meaning and intending to describe the parcel derived from the Official Bureau of Land Management plats and field notes of the Dependent Resurvey and Survey of the Arkansas River Bed approved July 22, 2010. The purpose of this description is to describe the wet bed areas as shown on the plat. This is exclusively for use by the Arkansas Riverbed Authority and the Choctaw, Chickasaw and Cherokee Nations of Oklahoma. Accuracy and acreages defined by the original survey documentation.

Note: See Exhibit "A" enlargement of the official Bureau of Land Management Plat attached.

David L. Page, Jr. (4/30/21)
LS #1566

David L. Page Jr.

DAVID L. PAGE, JR. P.L.S. #1566

4-30-21

DATE SIGNED

