

### Parcel 1

A parcel of land in section 1, situated westerly of lots 5, 6 and 7 of township 12 north, range 20 east, Indian Meridian, Muskogee County, Oklahoma, and being more particularly described as follows:

**BEGINNING** at the 1897 left bank meander corner of sections 1 and 2, downstream along said meander line;

**THENCE**, S. 60° 23' E., 396 feet,

**THENCE**, S. 49° 23' E., 462 feet,

**THENCE**, S. 61° 23' E., 527.34 feet,

**THENCE**, S. 51° 53' E., 1,187.34 feet,

**THENCE**, S. 40° 53' E., 279.84 feet to the 1897 left bank ordinary high-water mark,

**THENCE**, upstream along afore said mark, N. 48° 15' W., 306.90 feet,

**THENCE**, N. 56° 11' W., 60.72 feet,

**THENCE**, N. 51° 20' W., 310.86 feet,

**THENCE**, N. 57° 18' W., 653.4 feet,

**THENCE**, N. 56° 18' W., 108.9 feet,

**THENCE**, N. 50° 54' W., 174.24 feet,

**THENCE**, N. 70° 25' W., 312.84 feet,

**THENCE**, N. 64° 02' W., 203.28 feet,

**THENCE**, N. 64° 34' W., 363.66 feet,

**THENCE**, N. 65° 50' W., 187.44 feet to the angle point of sections 1 and 2,

**THENCE**, N. 0° 04' W., 310.86 feet to the **POINT OF BEGINNING** containing +/- 6.83 acres

**BASIS OF BEARINGS:** As shown on the official BLM plat, approved September 30, 2011, referenced to the true meridian.

Meaning and intending to describe the parcel derived from the Official Bureau of Land Management plats and fieldnotes of the Dependent Resurvey and Survey of the Arkansas River Bed approved September 30, 2011. The purpose of this description is to delineate the upland claim areas from the full claim areas as shown on the plat. This is exclusively for use by the

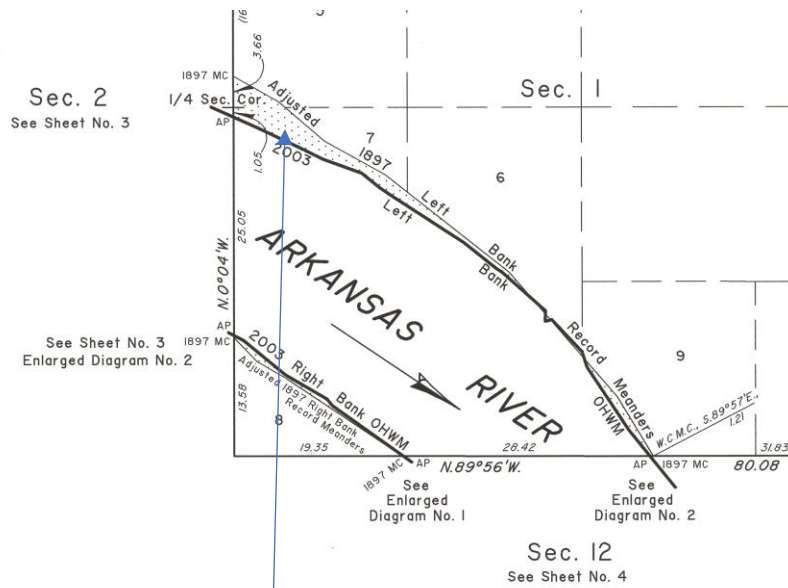
Arkansas Riverbed Authority and the Cherokee Nation of Oklahoma. Accuracy and acreages defined by the original survey documentation.

**Note:** See Exhibit "A" enlargement of the official Bureau of Land Management Plat attached.

Mark L. Bush (04/10/19)

LS 1385

### Exhibit "A"



**PARCEL 1**

A parcel of land in section 1, situated westerly of lot 8 of township 12 north, range 20 east, Indian Meridian, Muskogee County, Oklahoma, and being more particularly described as follows:

**BEGINNING** at the 1897 right bank meander corner of sections 1 and 2, downstream along said meander line;

**THENCE**, S. 43° 33' E., 246.84 feet,

**THENCE**, S. 60° 02' E., 264.00 feet,

**THENCE**, S. 56° 17' E., 1,056.66 feet to the 1897 right bank meander corner of sections 1 and 12,

**THENCE**, along the section line, N. 89° 56' E., 5.94 feet to the angel point of sections 1 and 12,

**THENCE**, upstream along the 2003 right bank ordinary high-water mark N. 54° 34' W., 660.66 feet,

**THENCE**, N. 37° 44' W., 62.7 feet,

**THENCE**, N. 59° 37' W., 368.28 feet,

**THENCE**, N. 50° 47' W., 407.22 feet,

**THENCE**, N. 62° 37' W., 83.16 feet to the angle of sections 1 and 2,

**THENCE**, along the section line, S. 0° 04' E., 17.16 feet to the **POINT OF BEGINNING** containing +/- 0.99 acres

**BASIS OF BEARINGS:** As shown on the official BLM plat, approved September 30, 2011, referenced to the true meridian.

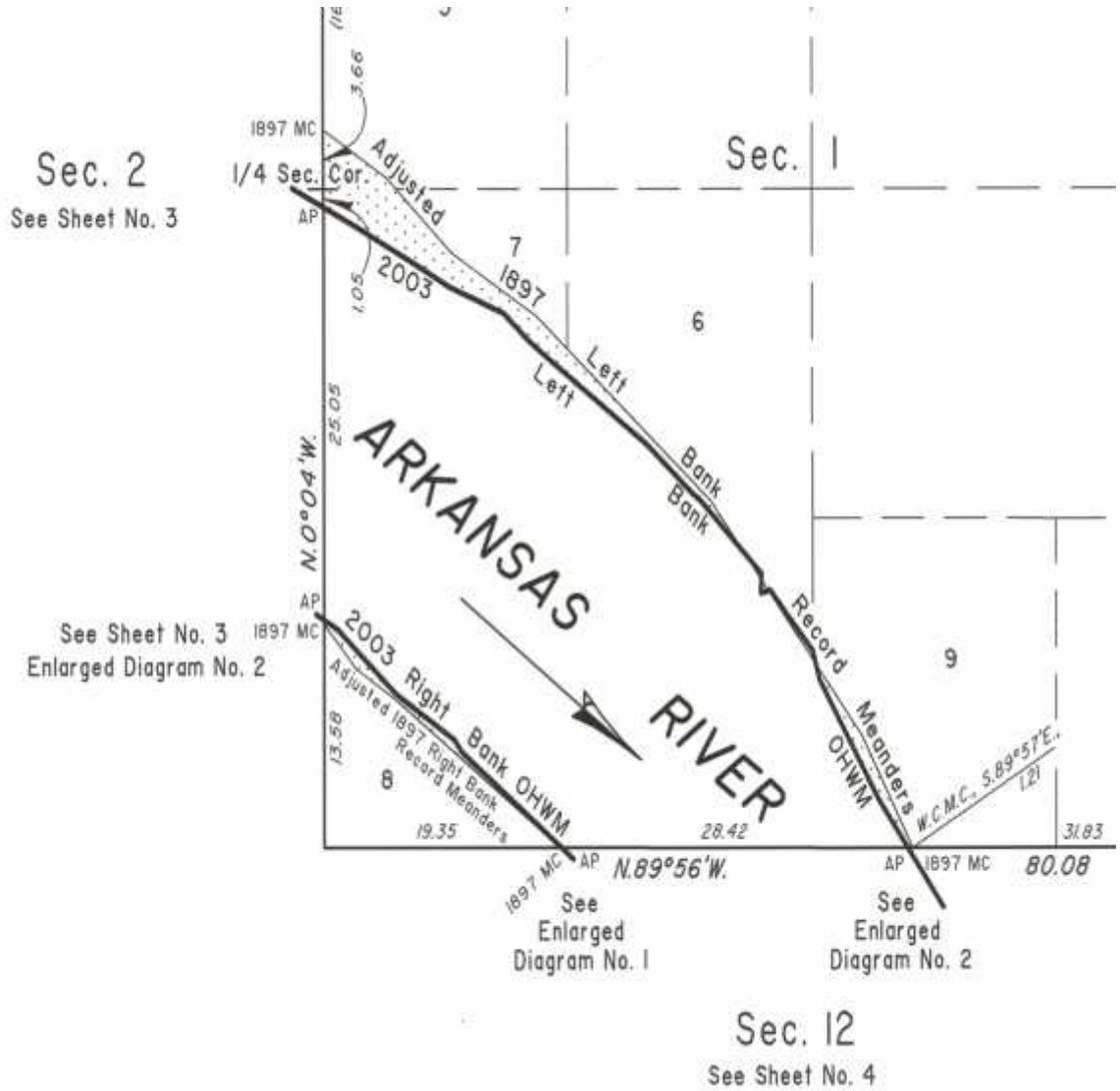
Meaning and intending to describe the parcel derived from the Official Bureau of Land Management plats and fieldnotes of the Dependent Resurvey and Survey of the Arkansas River Bed approved September 30, 2011. The purpose of this description is to delineate the upland claim areas from the full claim areas as shown on the plat. This is exclusively for use by the Arkansas Riverbed Authority and the Cherokee Nation of Oklahoma. Accuracy and acreages defined by the original survey documentation.

**Note:** See Exhibit "A" enlargement of the official Bureau of Land Management Plat attached.

Mark L. Bush (04/10/19)

LS 1385

Exhibit "A"





A parcel of land in section 2, situated southernly of lots 2, 3, 6 of township 12 north, range 20 east, Indian Meridian, Muskogee County, Oklahoma, and being more particularly described as follows:

**BEGINNING** at the 1897 left bank meander corner of sections 1 and 2, upstream along said meander line;

**THENCE**, N. 45° 32' W., 283.8 feet,

**THENCE**, N. 70° 31' W., 528.66 feet,

**THENCE**, N. 60° 01' W., 198.00 feet,

**THENCE**, N. 70° 01' W., 198.00 feet,

**THENCE**, N. 58° 31' W., 990.66 feet,

**THENCE**, N. 64° 01' W., 462.00 feet,

**THENCE**, N. 70° 01' W., 462.66 feet,

**THENCE**, N. 58° 01' W., 1,122.66 feet,

**THENCE**, N. 54° 01' W., 419.10 feet to the 2003 left bank ordinary high-water mark,

**THENCE**, downstream afore said mark, S. 38° 23' E., 210.54 feet,

**THENCE**, S. 16° 43' E., 110.88 feet,

**THENCE**, S. 44° 21' E., 110.22 feet,

**THENCE**, S. 84° 19' E., 85.14 feet,

**THENCE**, S. 60° 37' E., 121.44 feet,

**THENCE**, S. 34° 25' E., 169.62 feet,

**THENCE**, S. 40° 44' E., 193.38 feet,

**THENCE**, S. 52° 10' E., 197.34 feet,

**THENCE**, S. 57° 48' E., 761.64 feet,

**THENCE**, S. 64° 45' E., 620.40 feet,

**THENCE**, S. 60° 58' E., 665.94 feet,

**THENCE**, S. 68° 03' E., 118.80 feet,

**THENCE**, S. 61° 56' E., 819.06 feet,

**THENCE**, S. 76° 26' E., 77.22 feet,

**THENCE**, S. 54° 46' E., 188.10 feet,

**THENCE**, S. 60° 04' E., 198.00 feet,

**THENCE**, S. 65° 50' E., 236.28 feet to the angle point of sections 1 and 2,

**THENCE**, along the section line, N. 0° 04' W., 310.86 feet, to the **POINT OF BEGINNING** containing +/- 27.9 acres.

**BASIS OF BEARINGS:** As shown on the official BLM plat, approved September 30, 2011, referenced to the true meridian.

Meaning and intending to describe the parcel derived from the Official Bureau of Land Management plats and fieldnotes of the Dependent Resurvey and Survey of the Arkansas River Bed approved September 30, 2011. The purpose of this description is to delineate the upland claim areas from the full claim areas as shown on the plat. This is exclusively for use by the Arkansas Riverbed Authority and the Cherokee Nation of Oklahoma. Accuracy and acreages defined by the original survey documentation.

**Note:** See Exhibit "A" enlargement of the official Bureau of Land Management Plat attached.

Mark L. Bush (04/10/19)

LS 1385

Exhibit "A"



EXHIBIT A



A parcel of land in section 2, situated northerly of lots 4, 5, 7, 8, 9 and 10 of township 12 north, range 20 east, Indian Meridian, Muskogee County, Oklahoma, and being more particularly described as follows:

**BEGINNING** at the 1897 right bank meander corner of sections 2 and 3, downstream along said meander line;

**THENCE**, S. 30° 14' E., 306.90 feet,

**THENCE**, S. 37° 57' E., 1,058.64 feet,

**THENCE**, S. 26° 59' E., 1,191.30 feet,

**THENCE**, S. 36° 27' E., 926.64 feet,

**THENCE**, S. 49° 55' E., 397.32 feet,

**THENCE**, S. 70° 52' E., 396.66 feet,

**THENCE**, S. 87° 51' E., 264.00 feet,

**THENCE**, N. 72° 40' E., 264.00 feet,

**THENCE**, N. 77° 10' E., 462.00 feet,

**THENCE**, S. 85° 51' E., 396.66 feet,

**THENCE**, S. 69° 23' E., 715.44 feet to the 2003 right bank ordinary high-water mark,

**THENCE**, upstream afore said mark, N. 56° 08' W., 118.80 feet,

**THENCE**, N. 54° 00' W., 285.12 feet,

**THENCE**, N. 58° 39' W., 240.24 feet,

**THENCE**, N. 77° 32' W., 231.00 feet,

**THENCE**, N. 69° 02' W., 557.70 feet,

**THENCE**, N. 52° 03' E., 59.40 feet,

**THENCE**, N. 72° 17' W., 229.68 feet,

**THENCE**, N. 74° 42' W., 312.18 feet,

**THENCE**, N. 65° 52' W., 132.66 feet,

**THENCE**, S. 70° 40' W., 35.64 feet,

**THENCE**, N. 74° 42' W., 60.72 feet,

**THENCE**, N. 37° 41' W., 54.12 feet,

**THENCE**, N. 81° 05' W., 143.22 feet,

**THENCE**, N. 60° 06' W., 277.20 feet,

**THENCE**, N. 53° 22' W., 724.68 feet,

**THENCE**, N. 63° 09' W., 71.94 feet,

**THENCE**, N. 49° 27' W., 242.22 feet,

**THENCE**, N. 27° 52' W., 106.92 feet,

**THENCE**, N. 40° 14' W., 545.16 feet,

**THENCE**, N. 08° 27' W., 66.00 feet,

**THENCE**, N. 38° 57' W., 1,567.50 feet to the angle point of sections 2 and 3,

**THENCE**, along the section line, S. 0° 01' E., 72.60 feet, to the **POINT OF BEGINNING** containing +/- 43.28 acres.

**BASIS OF BEARINGS:** As shown on the official BLM plat, approved September 30, 2011, referenced to the true meridian.

Meaning and intending to describe the parcel derived from the Official Bureau of Land Management plats and fieldnotes of the Dependent Resurvey and Survey of the Arkansas River Bed approved September 30, 2011. The purpose of this description is to delineate the upland claim areas from the full claim areas as shown on the plat. This is exclusively for use by the Arkansas Riverbed Authority and the Cherokee Nation of Oklahoma. Accuracy and acreages defined by the original survey documentation.

**Note:** See Exhibit "A" enlargement of the official Bureau of Land Management Plat attached.

Mark L. Bush (04/10/19)

LS 1385

Exhibit "A"

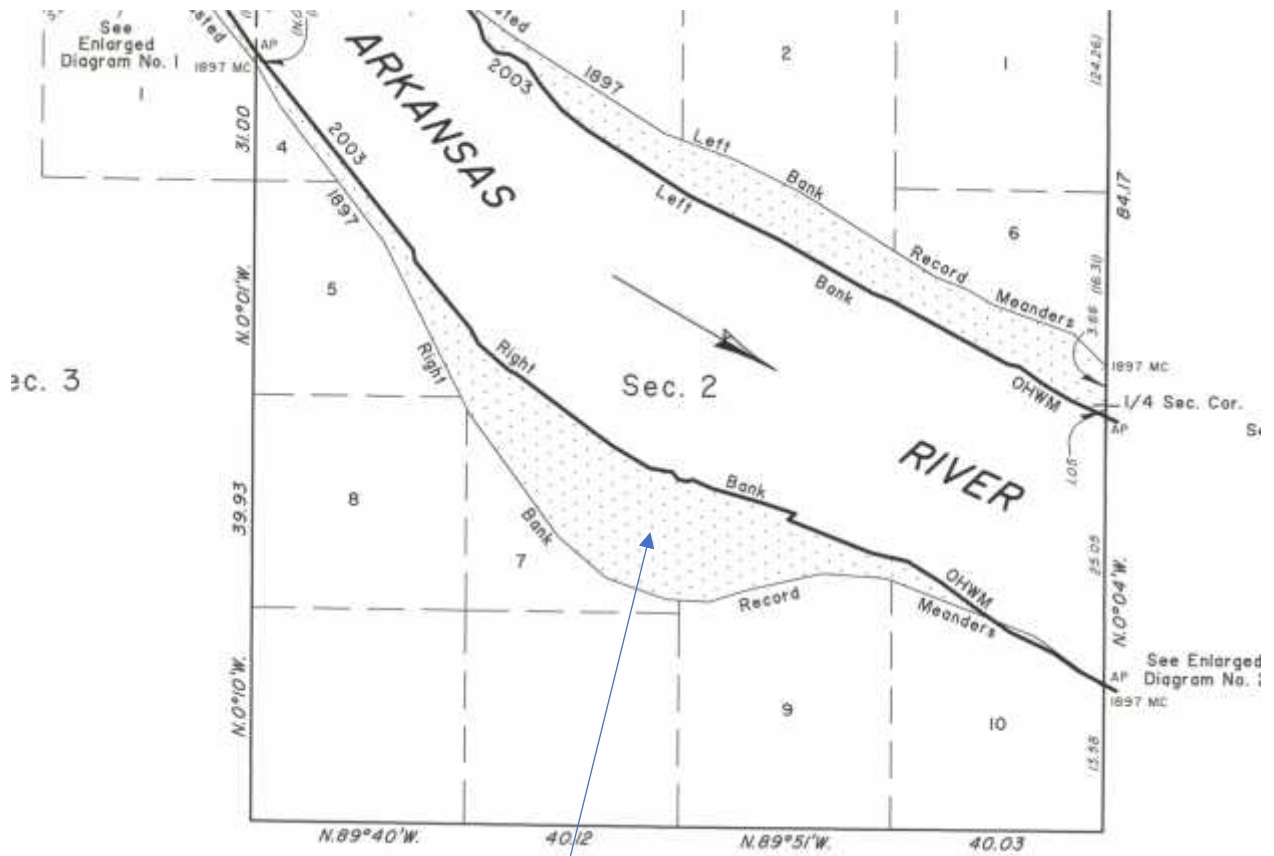


EXHIBIT A



A parcel of land in section 3, situated westerly of lot 1 of township 12 north, range 20 east, Indian Meridian, Muskogee County, Oklahoma, and being more particularly described as follows:

**BEGINNING** at the point for the 1897 right bank meander corner of sections 3 and 34, downstream along said meander line;

**THENCE**, S. 43° 54 E., 615.12 feet,

**THENCE**, S. 39° 09' E., 529.32 feet to the 1897 right bank meander corner of sections 2 and 3,

**THENCE**, along the section line, N. 0° 01' W., 72.6 feet to the angle point of sections 2 and 3,

**THENCE**, along afore said mark, N. 38° 57' W., 23.1 feet,

**THENCE**, N. 34° 21' W., 361.68 feet,

**THENCE**, N. 38° 14' W., 364.98 feet,

**THENCE**, N. 48° 07' W., 265.98 feet to the angle point of sections 3 and 34,

**THENCE**, along the section line, N. 89° 59' W., 118.14 feet to the **POINT OF BEGINNING** containing +/- 1.94 acres

**BASIS OF BEARINGS:** As shown on the official BLM plat, approved September 30, 2011, referenced to the true meridian.

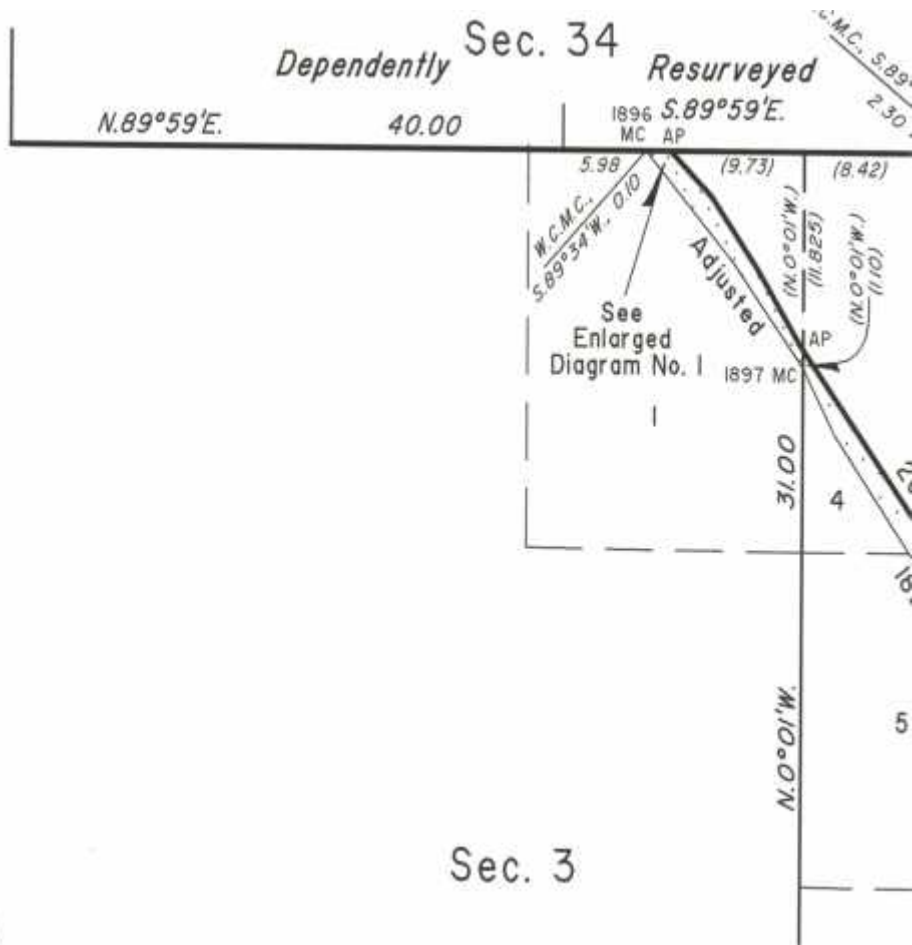
Meaning and intending to describe the parcel derived from the Official Bureau of Land Management plats and fieldnotes of the Dependent Resurvey and Survey of the Arkansas River Bed approved September 30, 2011. The purpose of this description is to delineate the upland claim areas from the full claim areas as shown on the plat. This is exclusively for use by the Arkansas Riverbed Authority and the Cherokee Nation of Oklahoma. Accuracy and acreages defined by the original survey documentation.

**Note:** See Exhibit "A" enlargement of the official Bureau of Land Management Plat attached.

Mark L. Bush (04/10/19)

LS 1385

# Exhibit "A"



A parcel of land in the southwest quarter, of the southwest quarter, situated southerly of lot 5, section 4 of township 15 north, range 19 east, Indian Meridian, Muskogee County, Oklahoma, and being more particularly described as follows:

**BEGINNING** at the 1896 adjusted left bank meander corner of sections 4 and 9, upstream along said meander line;

**THENCE**, N. 64° 46' W., 602.58 feet,

**THENCE**, N. 75° 06' W., 603.24 feet,

**THENCE**, S. 84° 13' W., 190.74 feet to the 1896 adjusted left bank meander corner of sections 4 and 5,

**THENCE**, S. 0° 11' E., along the section line 70.62 feet to the angle point of sections 4 and 5, on the digitized 2003 left bank ordinary high-water mark,

**THENCE**, downstream along afore said mark S. 78° 28' E., 200.64 feet,

**THENCE**, S. 75° 17' E., 221.76 feet,

**THENCE**, S. 72° 19' E., 446.82 feet,

**THENCE**, S. 68° 46' E., 351.78 feet to the angle point of sections 4 and 9,

**THENCE**, S. 89° 38' E., 153.12 feet to the **POINT OF BEGINNING**, containing +/- 2.54 acres.

**BASIS OF BEARINGS:** As shown on the official BLM plat, approved December 19, 2012, referenced to the true meridian.

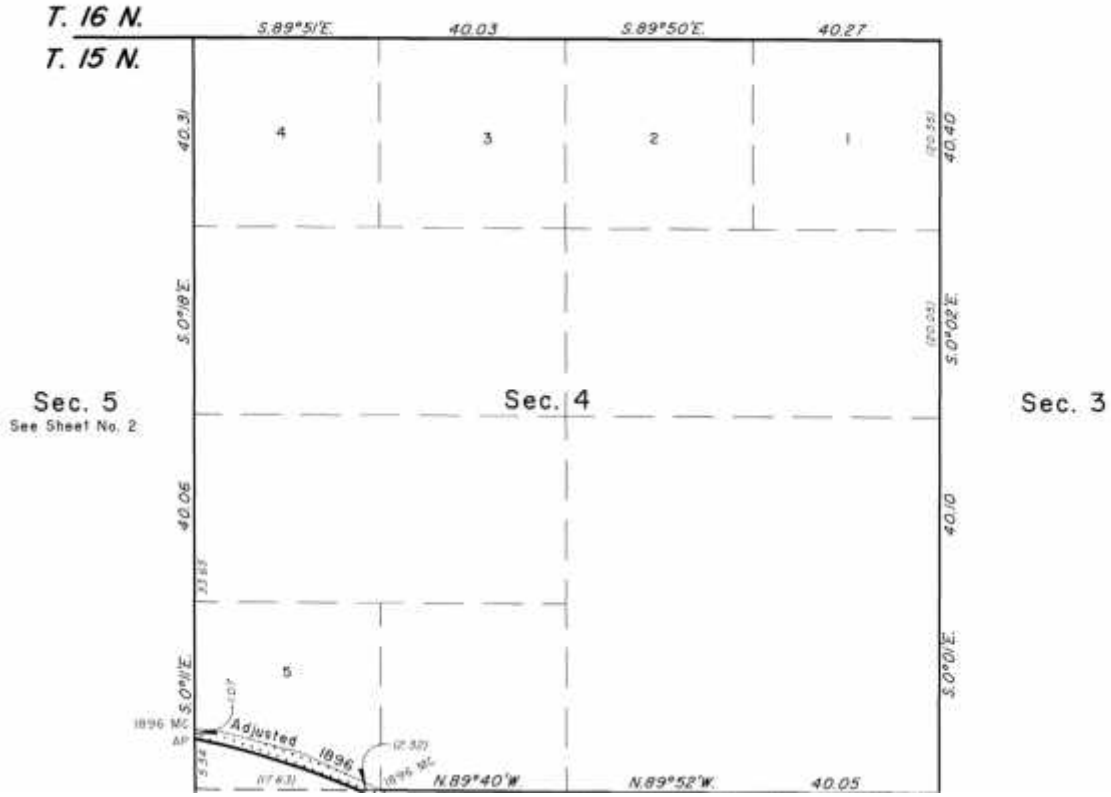
Meaning and intending to describe the parcel derived from the Official Bureau of Land Management plats and fieldnotes of the Dependent Resurvey and Survey of the Arkansas River Bed approved December 19, 2012. The purpose of this description is to delineate the upland claim areas from the full claim areas as shown on the plat. This is exclusively for use by the Arkansas Riverbed Authority and the Cherokee Nation of Oklahoma. Accuracy and acreages defined by the original survey documentation.

**Note:** See Exhibit "A" enlargement of the official Bureau of Land Management Plat attached.

Mark L. Bush (10/25/18)

LS #1385

# Exhibit "A"





A parcel of land in the southeast quarter, of the southeast quarter, situated southerly of lot 14, section 5 of township 15 north, range 19 east, Indian Meridian, Muskogee County, Oklahoma, and being more particularly described as follows:

**BEGINNING** at the 1896 adjusted left bank meander corner of sections 4 and 5, upstream along said meander line;

**THENCE**, N. 77° 20' W., 411.84 feet to the digitized 2003 left bank ordinary high-water mark,

**THENCE**, downstream along afore said mark S. 68° 10' E., 432.96 feet to the angle point of sections 4 and 5,

**THENCE**, N. 0° 11' W., along the section line 70.62 feet to the **POINT OF BEGINNING**, containing +/- 0.33 acres.

**BASIS OF BEARINGS:** As shown on the official BLM plat, approved December 19, 2012, referenced to the true meridian.

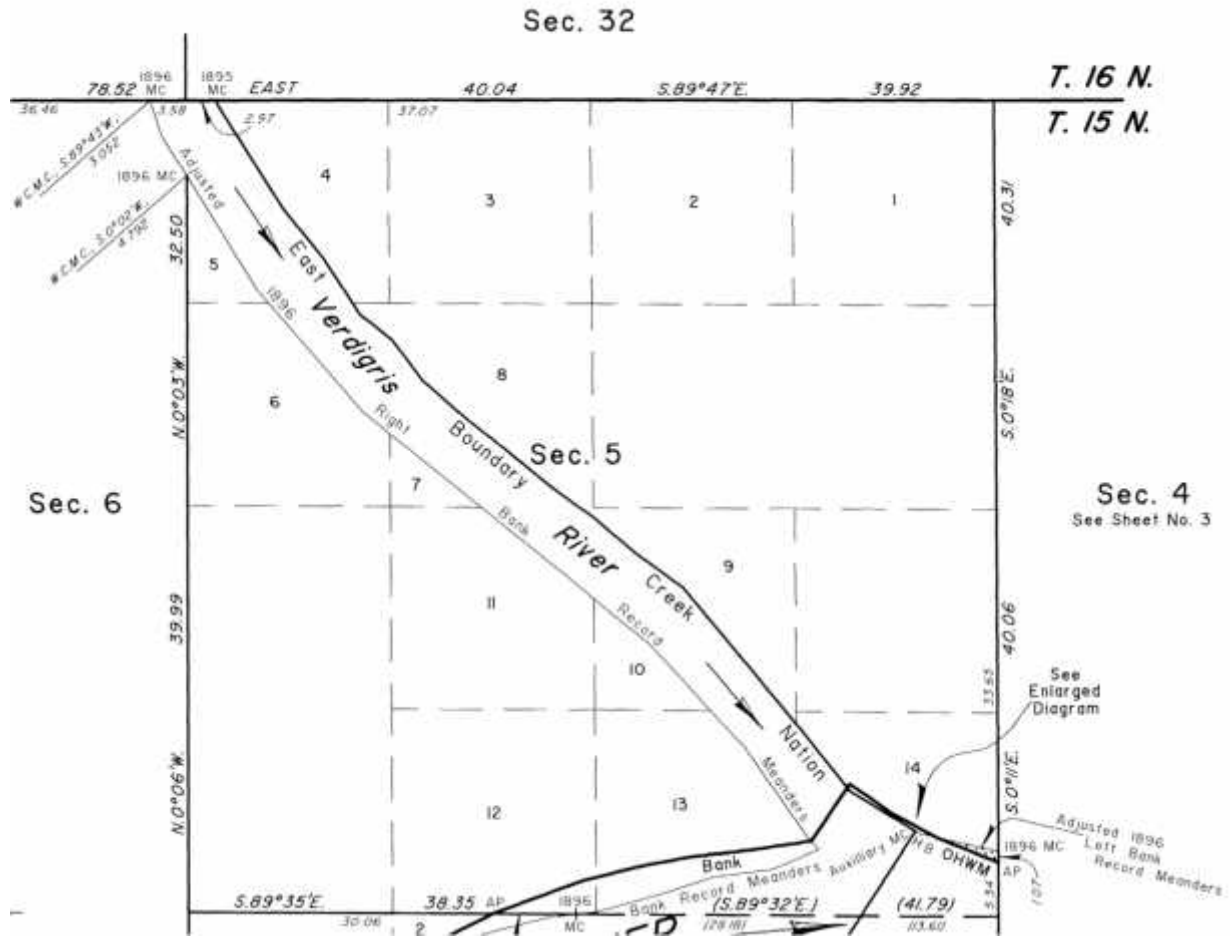
Meaning and intending to describe the parcel derived from the Official Bureau of Land Management plats and fieldnotes of the Dependent Resurvey and Survey of the Arkansas River Bed approved December 19, 2012. The purpose of this description is to delineate the upland claim areas from the full claim areas as shown on the plat. This is exclusively for use by the Arkansas Riverbed Authority and the Cherokee Nation of Oklahoma. Accuracy and acreages defined by the original survey documentation.

**Note:** See Exhibit "A" enlargement of the official Bureau of Land Management Plat attached.

Mark L. Bush (10/25/18)

LS #1385

# Exhibit "A"



### Parcel 1

A parcel of land in section 6, situated easterly of lots 6, 9, and 12, of township 14 north, range 20 east, Indian Meridian, Muskogee County, Oklahoma, and being more particularly described as follows:

**BEGINNING** at the 1896 right bank meander corner of sections 6 and 7, upstream along said meander line;

**THENCE**, N. 12° 05' E., 1,654.62 feet,

**THENCE**, N 26° 32' E., 2,828.10 feet to the 2003 right bank high-water mark,

**THENCE**, downstream along afore said mark, S. 19° 58' W., 1,055.34 feet,

**THENCE**, S. 31° 40' W., 156.42 feet,

**THENCE**, S. 18° 01' W., 192.06 feet,

**THENCE**, S. 21° 32' W., 1,026.30 feet,

**THENCE**, S. 29° 18' W., 380.16 feet,

**THENCE**, S. 14° 27' W., 351.78 feet,

**THENCE**, S. 71° 21' W., 72.60 feet,

**THENCE**, S. 08° 50' W., 279.84 feet,

**THENCE**, S. 19° 31' W., 313.50 feet,

**THENCE**, S. 28° 01' W., 99.00 feet,

**THENCE**, S. 13° 26' W., 545.82 feet to the angle point of sections 6 and 7,

**THENCE**, N. 89° 46' W., 67.32 feet along the section line to the **POINT OF BEGINNING**, containing +/- 13.30 acres.

**BASIS OF BEARINGS:** As shown on the official BLM plat, approved September 28, 2012, referenced to the true meridian.

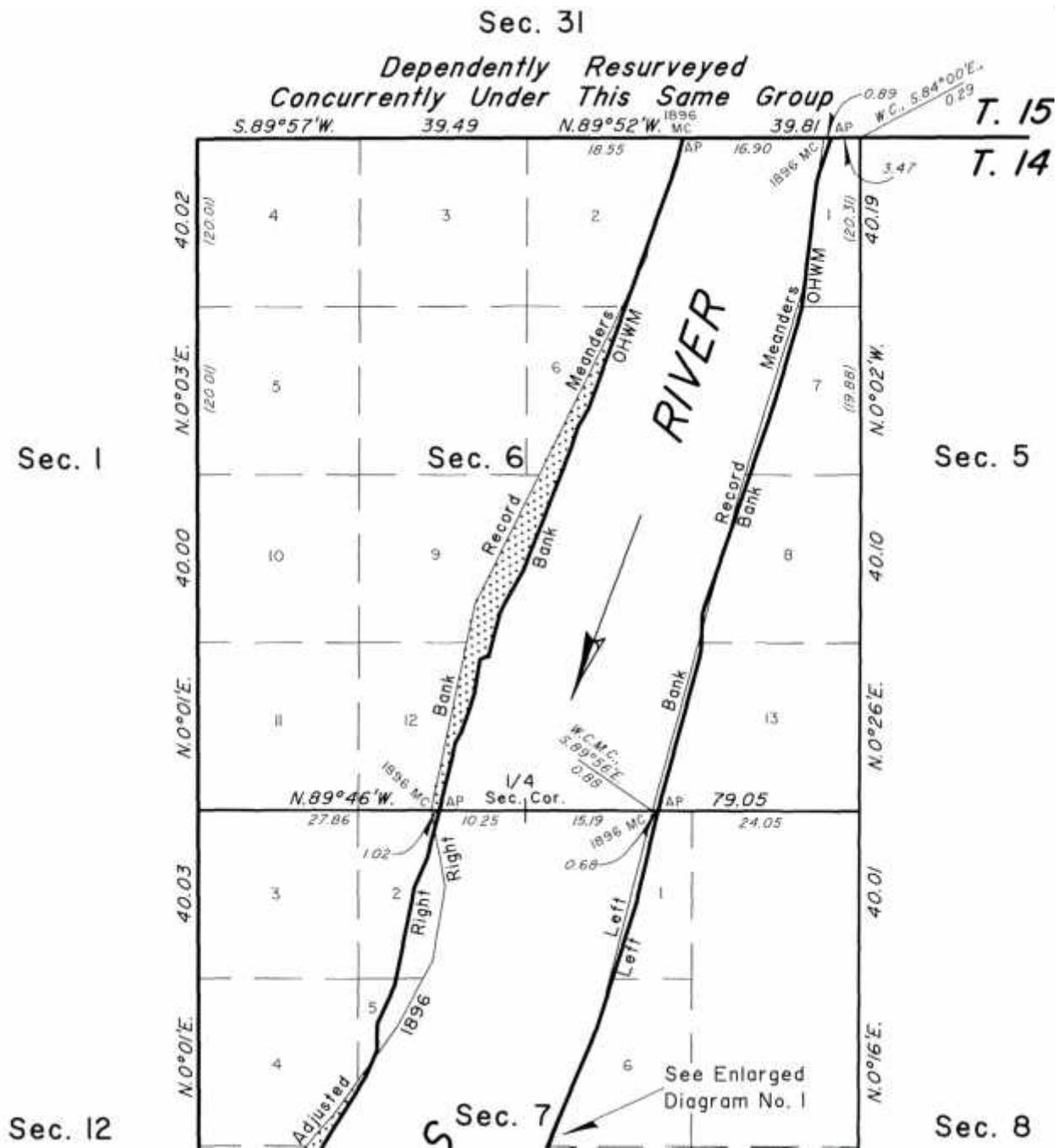
Meaning and intending to describe the parcel derived from the Official Bureau of Land Management plats and fieldnotes of the Dependent Resurvey and Survey of the Arkansas River Bed approved September 28, 2012. The purpose of this description is to delineate the upland claim areas from the full claim areas as shown on the plat. This is exclusively for use by the Arkansas Riverbed Authority and the Cherokee Nation of Oklahoma. Accuracy and acreages defined by the original survey documentation.

**Note:** See Exhibit "A" enlargement of the official Bureau of Land Management Plat attached.

Mark L. Bush (02/10/19)

LS 1385

Exhibit "A"



A parcel of land in section 7, situated westerly of lots 6 and 7 of township 14 north, range 20 east, Indian Meridian, Muskogee County, Oklahoma, and being more particularly described as follows:

**BEGINNING** at the point for the meander corner sections 7 and 18,

**THENCE**, N. 41° 33' E., 2046.66 feet upstream along said meander line,

**THENCE**, N. 36° 33' E., 1,094.94, to the **POINT OF BEGINNING**,

**THENCE**, N. 36° 33' E., 93.72 feet,

**THENCE**, N. 22° 03' E., 1,188.00 feet,

**THENCE**, N. 14° 18' E., 83.16 feet, to the 2003 left bank ordinary high-water mark,

**THENCE**, downstream along afore said mark, S. 17° 49' W., 93.06 feet,

**THENCE**, S. 22° 55' W., 1,268.52 feet to the **POINT OF BEGINNING**, containing +/- 0.39 acres.

**BASIS OF BEARINGS:** As shown on the official BLM plat, approved September 28, 2012, referenced to the true meridian.

Meaning and intending to describe the parcel derived from the Official Bureau of Land Management plats and fieldnotes of the Dependent Resurvey and Survey of the Arkansas River Bed approved September 28, 2012. The purpose of this description is to delineate the upland claim areas from the full claim areas as shown on the plat. This is exclusively for use by the Arkansas Riverbed Authority and the Cherokee Nation of Oklahoma. Accuracy and acreages defined by the original survey documentation.

**Note:** See Exhibit "A" and Exhibit "B" enlargement of the official Bureau of Land Management Plat attached.

Mark L. Bush (04/10/19)

LS 1385

Exhibit "A"

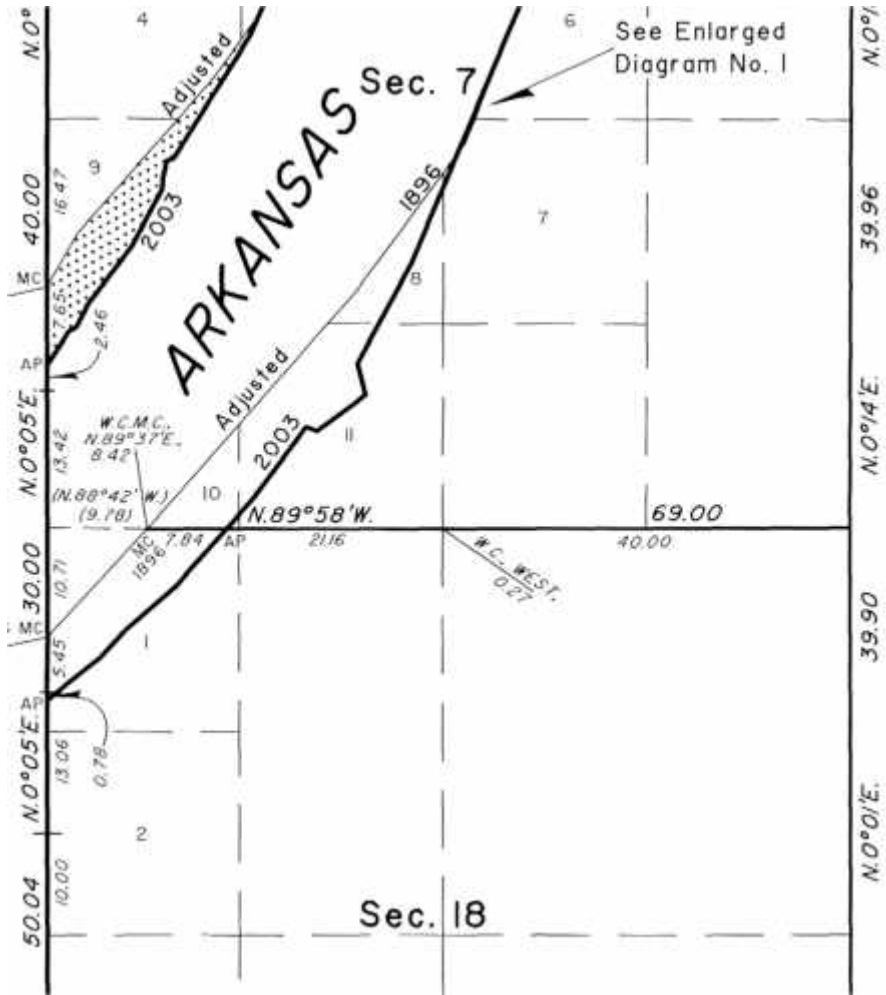
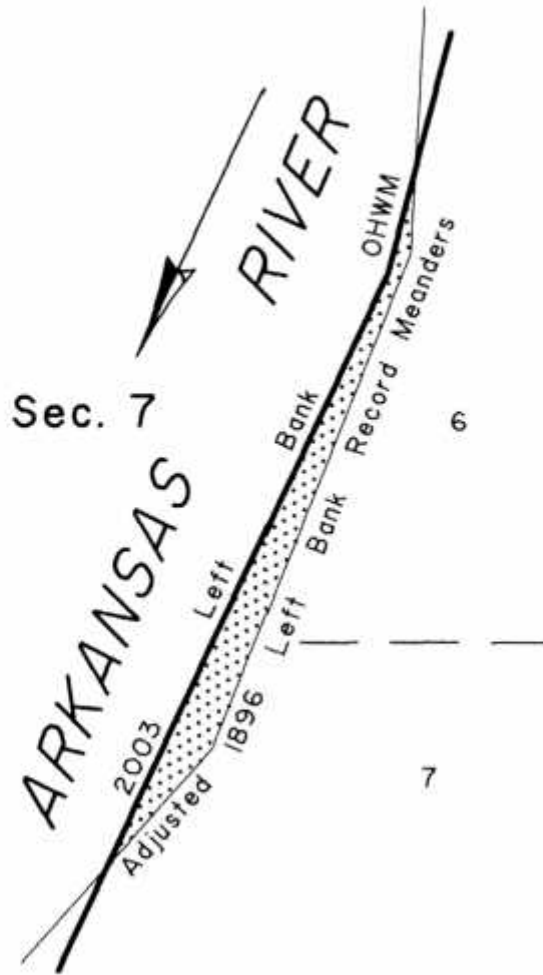


Exhibit "B"

ENLARGED DIAGRAM No. 1  
(Not to Scale)







A parcel of land in section 7, situated westerly of lots 4 and 9 of township 14 north, range 20 east, Indian Meridian, Muskogee County, Oklahoma, and being more particularly described as follows:

**BEGINNING** at the point for the 1896 right bank meander corner of sections 7 and 12, upstream along said meander line;

**THENCE**, N. 29° 52' E., 394.68 feet,

**THENCE**, N. 41° 24' E., 1,315.38 feet

**THENCE**, N. 36° 08' E., 522.72 feet to the 2003 right bank high-water mark,

**THENCE**, downstream along afore said mark, S. 24° 11' W., 133.32 feet,

**THENCE**, S. 31° 46' W., 945.12 feet,

**THENCE**, S. 73° 50' W., 48.18 feet,

**THENCE**, S. 14° 19' W., 112.86 feet,

**THENCE**, S. 01° 30' W., 75.9 feet,

**THENCE**, S. 28° 23' W., 418.44 feet,

**THENCE**, S. 37° 03' W., 471.24 feet,

**THENCE**, S. 27° 13' W., 60.06 feet,

**THENCE**, S. 27° 12' W., 103.62 feet,

**THENCE**, S. 58° 38' W., 57.42 feet,

**THENCE**, S. 33° 31' W., 255.42 feet to the angle point of sections 7 and 12,

**THENCE**, N. 0° 05' E., 504.9 feet along the section line to the **POINT OF BEGINNING**, containing +/- 10.27 acres.

**BASIS OF BEARINGS:** As shown on the official BLM plat, approved September 28, 2012, referenced to the true meridian.

Meaning and intending to describe the parcel derived from the Official Bureau of Land Management plats and fieldnotes of the Dependent Resurvey and Survey of the Arkansas River Bed approved September 28, 2012. The purpose of this description is to delineate the upland claim areas from the full claim areas as shown on the plat. This is exclusively for use by the

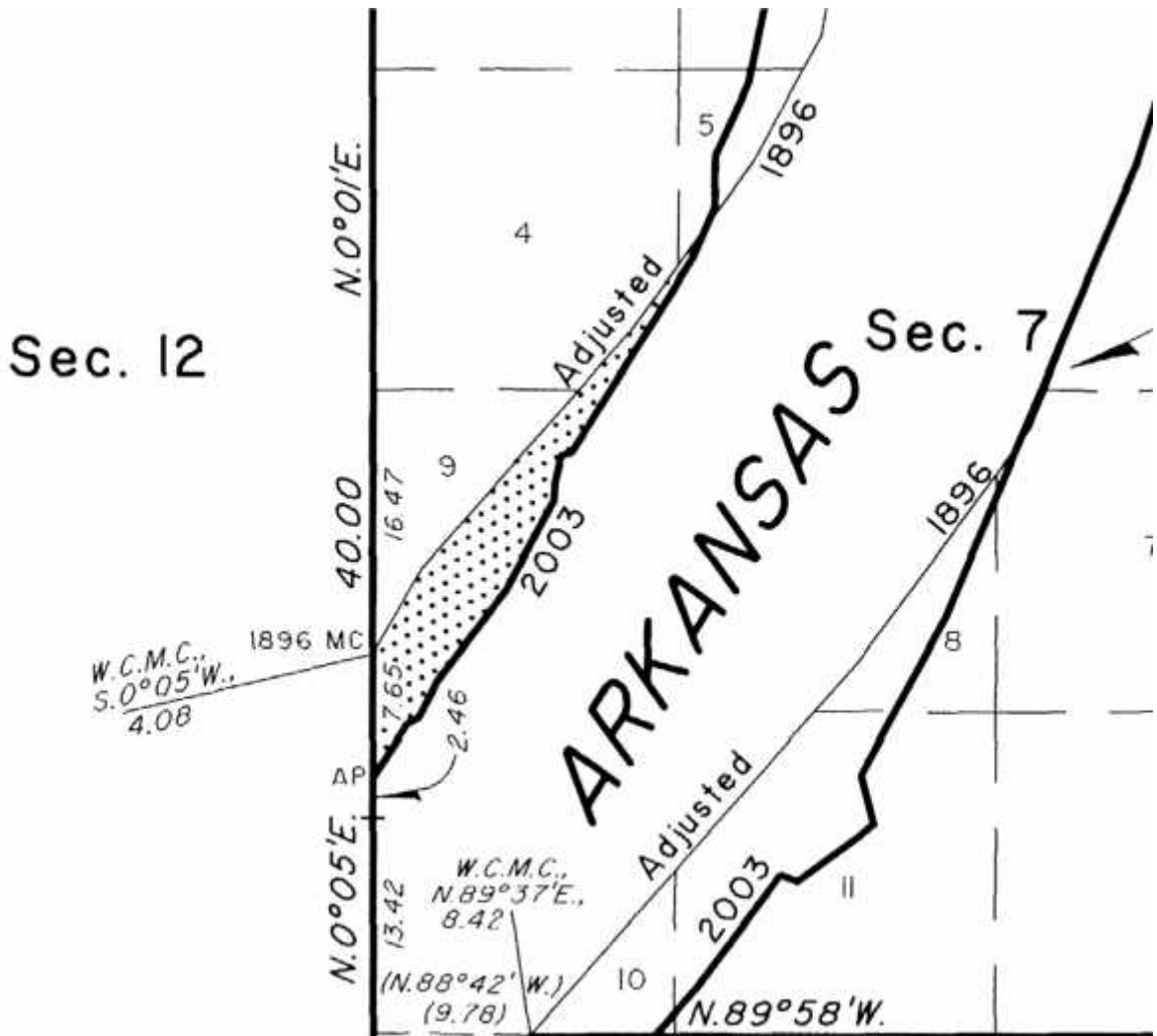
Arkansas Riverbed Authority and the Cherokee Nation of Oklahoma. Accuracy and acreages defined by the original survey documentation.

**Note:** See Exhibit "A" enlargement of the official Bureau of Land Management Plat attached.

Mark L. Bush (04/10/19)

LS 1385

Exhibit "A"



A parcel of land in the north half of the northeast quarter, situated northerly of lot 1, section 8 of township 15 north, range 19 east, Indian Meridian, Muskogee County, Oklahoma, and being more particularly described as follows:

**BEGINNING** at the 1896 adjusted right bank meander corner of sections 8 and 9, upstream along said meander line;

**THENCE**, N. 75° 43' W., 328.02 feet,

**THENCE**, S. 89° 57' W., 328.02 feet,

**THENCE**, S. 67° 20' W., 348.48 feet,

**THENCE**, S. 68° 50' W., 262.68 feet,

**THENCE**, S. 63° 04' W., 460.02 feet distance, to the auxiliary meander corner on the Creek Nation and Cherokee Nation Boundary,

**THENCE**, N. 33° 01' E., along afore said boundary line, 822.36 feet to the digitized 2003 right bank ordinary high-water mark,

**THENCE**, downstream along afore said mark S. 83° 35' E., 555.06 feet,

**THENCE**, N. 89° 44' E., 230.34 feet,

**THENCE**, S. 71° 46' E., 413.16 feet to the angle point of sections 8 and 9,

**THENCE**, S. 0° 11' E., along the section line 142.56 feet to the **POINT OF BEGINNING**, containing +/- 8.94 acres.

**BASIS OF BEARINGS:** As shown on the official BLM plat, approved December 19, 2012, referenced to the true meridian.

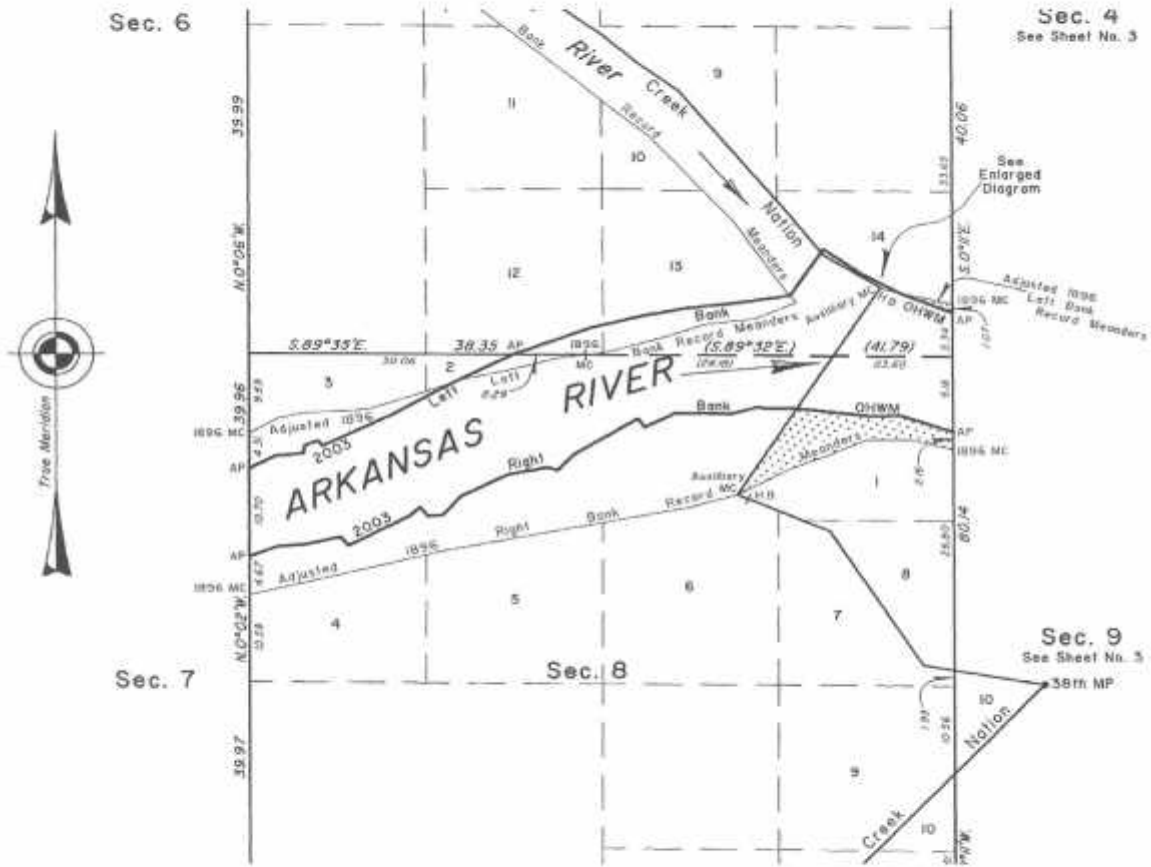
Meaning and intending to describe the parcel derived from the Official Bureau of Land Management plats and fieldnotes of the Dependent Resurvey and Survey of the Arkansas River Bed approved December 19, 2012. The purpose of this description is to delineate the upland claim areas from the full claim areas as shown on the plat. This is exclusively for use by the Arkansas Riverbed Authority and the Cherokee Nation of Oklahoma. Accuracy and acreages defined by the original survey documentation.

**Note:** See Exhibit "A" enlargement of the official Bureau of Land Management Plat attached.

Mark L. Bush (10/25/18)

LS #1385

# Exhibit "A"



A parcel of land in the north half of section 9, situated southerly of lots 2 and 3, section 9 of township 15 north, range 19 east, Indian Meridian, Muskogee County, Oklahoma, and being more particularly described as follows:

**BEGINNING** at the 1896 adjusted left bank meander corner of sections 4 and 9, downstream along said meander line;

**THENCE**, S. 61° 41' E., 461.34 feet,

**THENCE**, S. 52° 12' E., 462.66 feet,

**THENCE**, S. 37° 28' E., 264.00 feet,

**THENCE**, S. 45° 57' E., 594.66 feet,

**THENCE**, S. 42° 28' E., 330.66 feet,

**THENCE**, S. 31° 13' E., 330.66 feet to Grand River Confluence,

**THENCE**, S. 18° 13' E., 962.28 across the Grand River to the digitized 2003 left bank ordinary high-water mark,

**THENCE**, upstream along afore said mark N. 39° 12' W., 578.16 feet,

**THENCE**, N. 28° 34' W., 981.42 feet,

**THENCE**, N. 34° 08' W., 609.18 feet,

**THENCE**, N. 48° 39' W., 463.32 feet,

**THENCE**, N. 53° 34' W., 301.62 feet,

**THENCE**, N. 58° 47' W., 516.78 feet,

**THENCE**, N. 89° 38' E., 153.12 feet to the **POINT OF BEGINNING**, containing +/- 11.60 acres.

**BASIS OF BEARINGS:** As shown on the official BLM plat, approved December 19, 2012, referenced to the true meridian.

Meaning and intending to describe the parcel derived from the Official Bureau of Land Management plats and fieldnotes of the Dependent Resurvey and Survey of the Arkansas River Bed approved December 19, 2012. The purpose of this description is to delineate the upland claim areas from the full claim areas as shown on the plat. This is exclusively for use by the Arkansas Riverbed Authority and the Cherokee Nation of Oklahoma. Accuracy and acreages defined by the original survey documentation.

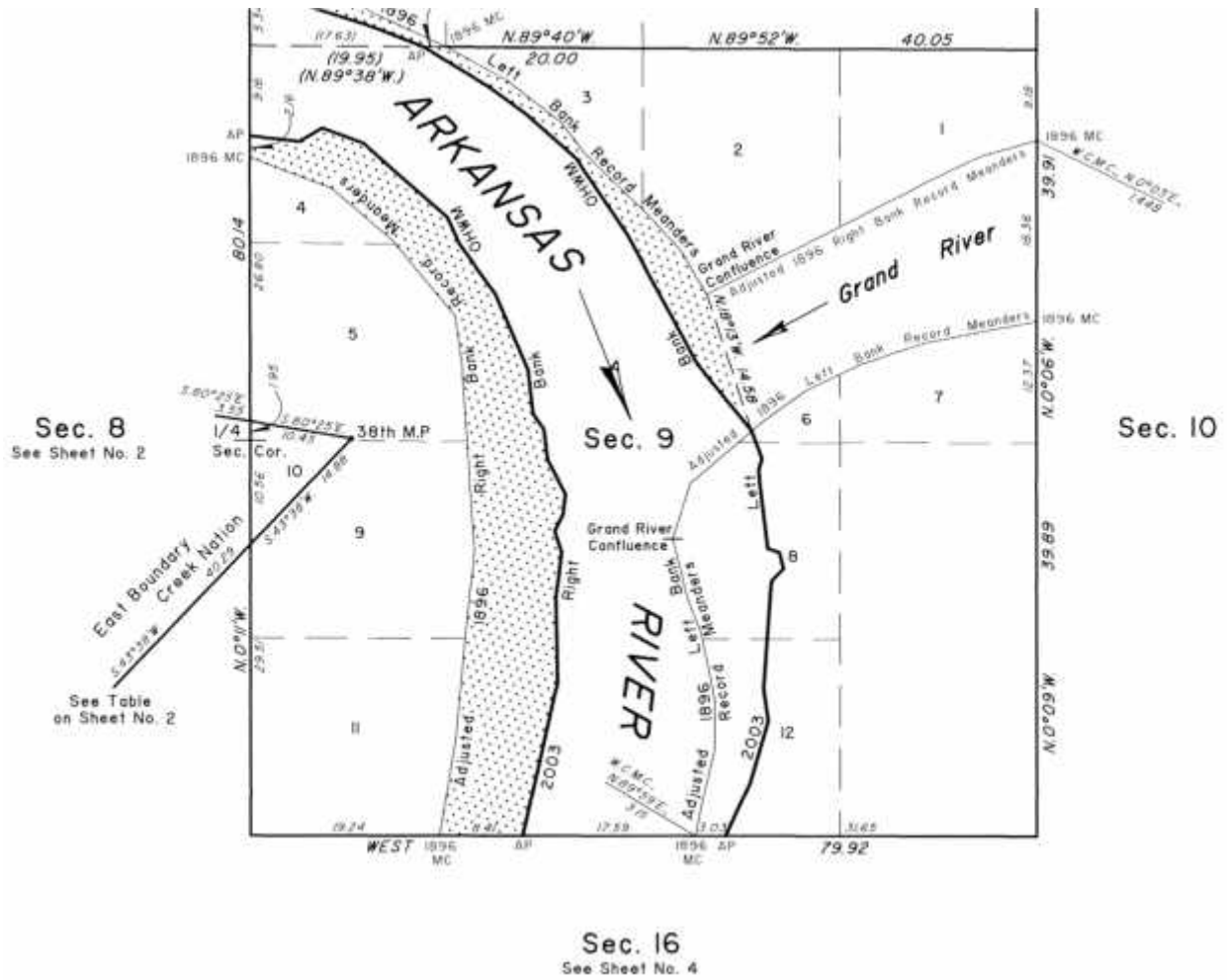
**Note:** See Exhibit "A" enlargement of the official Bureau of Land Management Plat attached.

Mark L. Bush (10/25/18)

LS #1385



### Exhibit "A"



A parcel of land in the west half of section 9, situated easterly of lots 4, 5, 9 and 11, section 9 of township 15 north, range 19 east, Indian Meridian, Muskogee County, Oklahoma, and being more particularly described as follows:

**BEGINNING** at the 1896 adjusted right bank meander corner of sections 9 and 16, upstream along said meander line;

**THENCE**, N. 9° 23' E., 660.66 feet,

**THENCE**, N. 5° 08' E., 660.66 feet,

**THENCE**, N. 5° 53' E., 594.66 feet,

**THENCE**, N. 3° 51' W., 1255.98 feet,

**THENCE**, N. 8° 36' W., 330.66 feet,

**THENCE**, N. 39° 46' W., 661.32 feet,

**THENCE**, N. 49° 30' W., 529.32 feet,

**THENCE**, N. 69° 27' W., 590.04 feet to the 1896 adjusted right bank meander corner of sections 8 and 9,

**THENCE**, N. 0° 11' W., along the section line 142.56 feet to the angle point of sections 8 and 9, to the digitized 2003 right bank ordinary high-water mark,

**THENCE**, downstream along afore said mark S. 83° 36' E., 337.26 feet,

**THENCE**, N. 59° 43' E., 174.24 feet,

**THENCE**, S. 69° 45' E., 295.02 feet,

**THENCE**, S. 48° 44' E., 749.10 feet,

**THENCE**, S. 25° 07' E., 199.32 feet,

**THENCE**, S. 36° 11' E., 407.22 feet,

**THENCE**, S. 23° 24' E., 561.66 feet,

**THENCE**, S. 6° 37' E., 288.42 feet,

**THENCE**, S. 34° 12' E., 127.38 feet,

**THENCE**, S. 6° 38' E., 205.26 feet,

**THENCE**, S. 27° 49' E., 258.72 feet,

**THENCE**, S. 6° 47' W., 140.58 feet,

**THENCE**, S. 25° 48' W., 126.06 feet,

**THENCE**, S. 19° 11' E., 144.54 feet,

**THENCE**, S. 7° 02' W., 304.26 feet,

**THENCE**, S. 0° 55' E., 577.50 feet,

**THENCE**, S. 12° 46' W., 1045.44 feet,

**THENCE**, N. 90° 0' W., 555.06 feet to the **POINT OF BEGINNING**, containing +/- 58.82 acres.

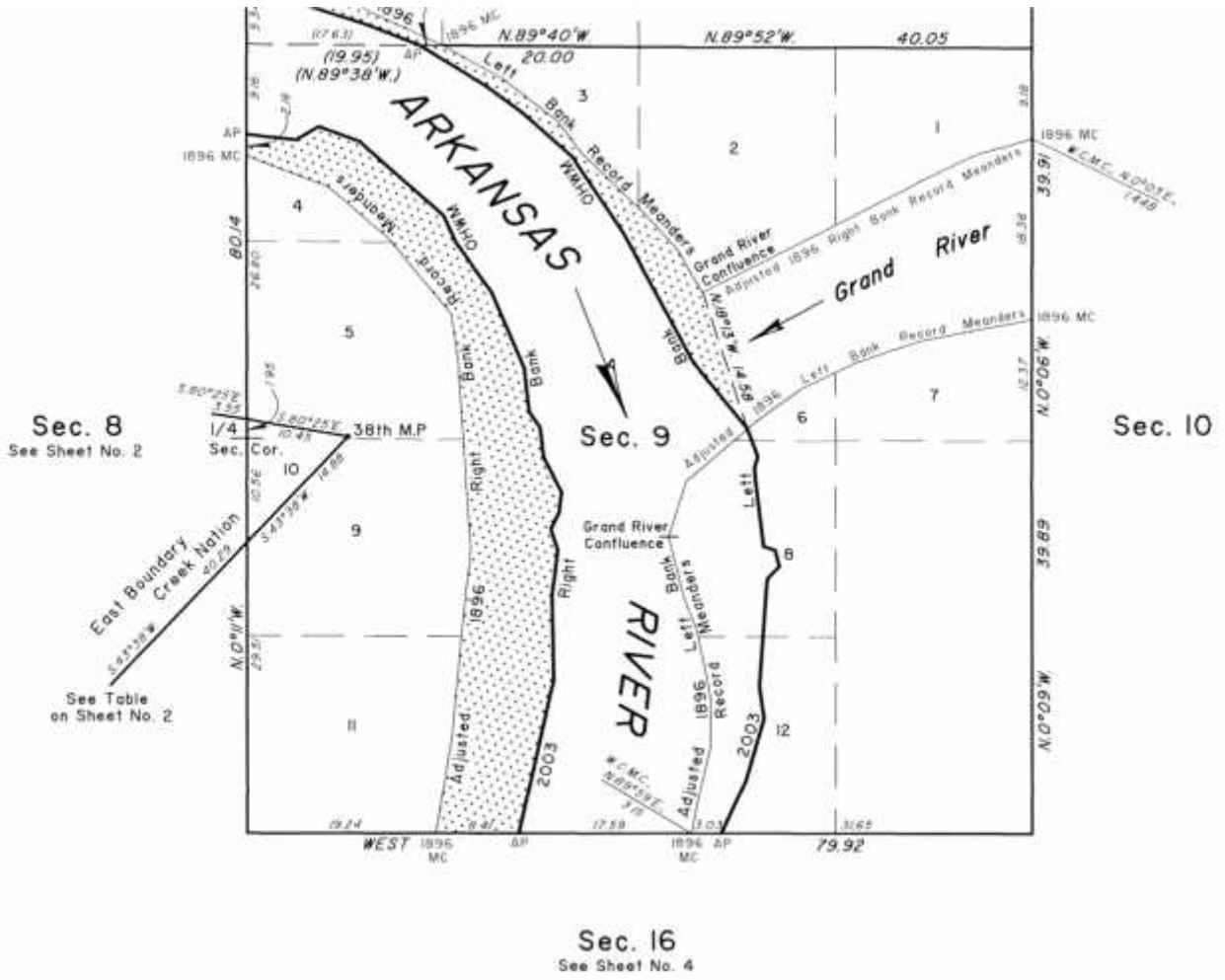
**BASIS OF BEARINGS:** As shown on the official BLM plat, approved December 19, 2012, referenced to the true meridian.

Meaning and intending to describe the parcel derived from the Official Bureau of Land Management plats and fieldnotes of the Dependent Resurvey and Survey of the Arkansas River Bed approved December 19, 2012. The purpose of this description is to delineate the upland claim areas from the full claim areas as shown on the plat. This is exclusively for use by the Arkansas Riverbed Authority and the Cherokee Nation of Oklahoma. Accuracy and acreages defined by the original survey documentation.

**Note:** See Exhibit "A" enlargement of the official Bureau of Land Management Plat attached.

Mark L. Bush (10/25/18)  
LS #1385

# Exhibit "A"



A parcel of land in section 12, situated easterly of lots 8, and 9 of township 12 north, range 20 east, Indian Meridian, Muskogee County, Oklahoma, and being more particularly described as follows:

**BEGINNING** at the 1897 right bank meander corner of sections 12 and 13, upstream along said meander line;

**THENCE**, N. 16° 58' W., 330.66 feet,

**THENCE**, N. 26° 27' W., 2,001.12 feet to the 2003 right bank ordinary high-water mark,

**THENCE**, downstream afore said mark, S. 33° 00' E., 425.04 feet,

**THENCE**, S. 30° 29' E., 507.54 feet,

**THENCE**, S. 40° 50' E., 256.08 feet,

**THENCE**, S. 33° 57' E., 595.98 feet,

**THENCE**, S. 69° 32' E., 96.36 feet,

**THENCE**, N. 65° 14' E., 58.74 feet,

**THENCE**, N. 83° 03' E., 78.54 feet,

**THENCE**, S. 66° 39' E., 145.86 feet,

**THENCE**, S. 49° 13' E., 19.80 feet angle point of sections 7 and 12,

**THENCE**, along the section line, S. 0° 02' E., 283.14 feet to the angle point of sections 7 and 12, on 2003 right bank ordinary high-water mark,

**THENCE**, downstream afore said mark, N. 79° 13' W., 153.12 feet,

**THENCE**, S. 89° 18' W., 91.08 feet,

**THENCE**, S. 09° 48' W., 36.30 feet,

**THENCE**, S. 22° 53' E., 151.80 feet,

**THENCE**, S. 27° 40' E., 142.03 feet to the angle point of sections 12 and 13,

**THENCE**, along the section line, N. 89° 22' W., 250.67 feet to the **POINT OF BEGINNING** containing +/- 9.38 acres.

**BASIS OF BEARINGS:** As shown on the official BLM plat, approved September 30, 2011, referenced to the true meridian.

Meaning and intending to describe the parcel derived from the Official Bureau of Land Management plats and fieldnotes of the Dependent Resurvey and Survey of the Arkansas River Bed approved September 30, 2011. The purpose of this description is to delineate the upland claim areas from the full claim areas as shown on the plat. This is exclusively for use by the Arkansas Riverbed Authority and the Cherokee Nation of Oklahoma. Accuracy and acreages defined by the original survey documentation.

**Note:** See Exhibit "A" enlargement of the official Bureau of Land Management Plat attached.

Mark L. Bush (04/10/19)

LS 1385

Exhibit "A"

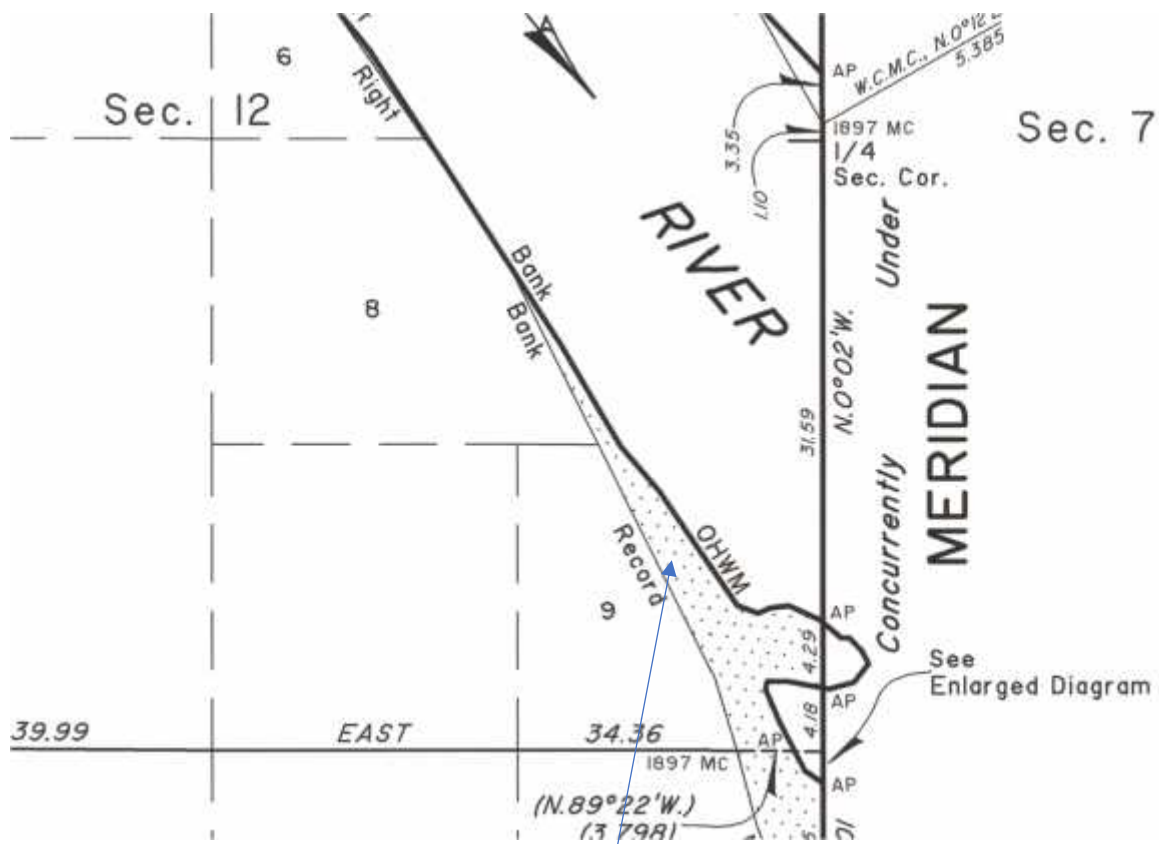


EXHIBIT A

A parcel of land in section 12, situated easterly of lots 1 and 2 of township 14 north, range 19 east, Indian Meridian, Muskogee County, Oklahoma, and being more particularly described as follows:

**BEGINNING** at the 1896 right bank meander corner of sections 7 and 12, downstream along said meander line;

**THENCE**, S. 36° 36' W., 186.12 feet,

**THENCE**, S. 33° 27' W., 198.66 feet

**THENCE**, S. 48° 38' W., 331.32 feet,

**THENCE**, S. 36° 26' W., 1,259.94 feet, to the point for the 1896 right bank meander corner of sections 12 and 13,

**THENCE**, along the section line, S. 89° 41' E., 163.02 feet to angle point of sections 12 and 13,

**THENCE**, upstream along afore said mark, N. 48° 52' E., 733.92 feet,

**THENCE**, N. 42° 32' E., 70.62 feet,

**THENCE**, N. 41° 18' E., 238.92 feet,

**THENCE**, N. 41° 52' E., 443.52 feet to the angel point of sections 7 and 12,

**THENCE**, N. 0° 05' E., 504.9 feet along the section line to the **POINT OF BEGINNING**, containing +/- 10.34 acres.

**BASIS OF BEARINGS:** As shown on the official BLM plat, approved September 28, 2012, referenced to the true meridian.

Meaning and intending to describe the parcel derived from the Official Bureau of Land Management plats and fieldnotes of the Dependent Resurvey and Survey of the Arkansas River Bed approved September 28, 2012. The purpose of this description is to delineate the upland claim areas from the full claim areas as shown on the plat. This is exclusively for use by the Arkansas Riverbed Authority and the Cherokee Nation of Oklahoma. Accuracy and acreages defined by the original survey documentation.

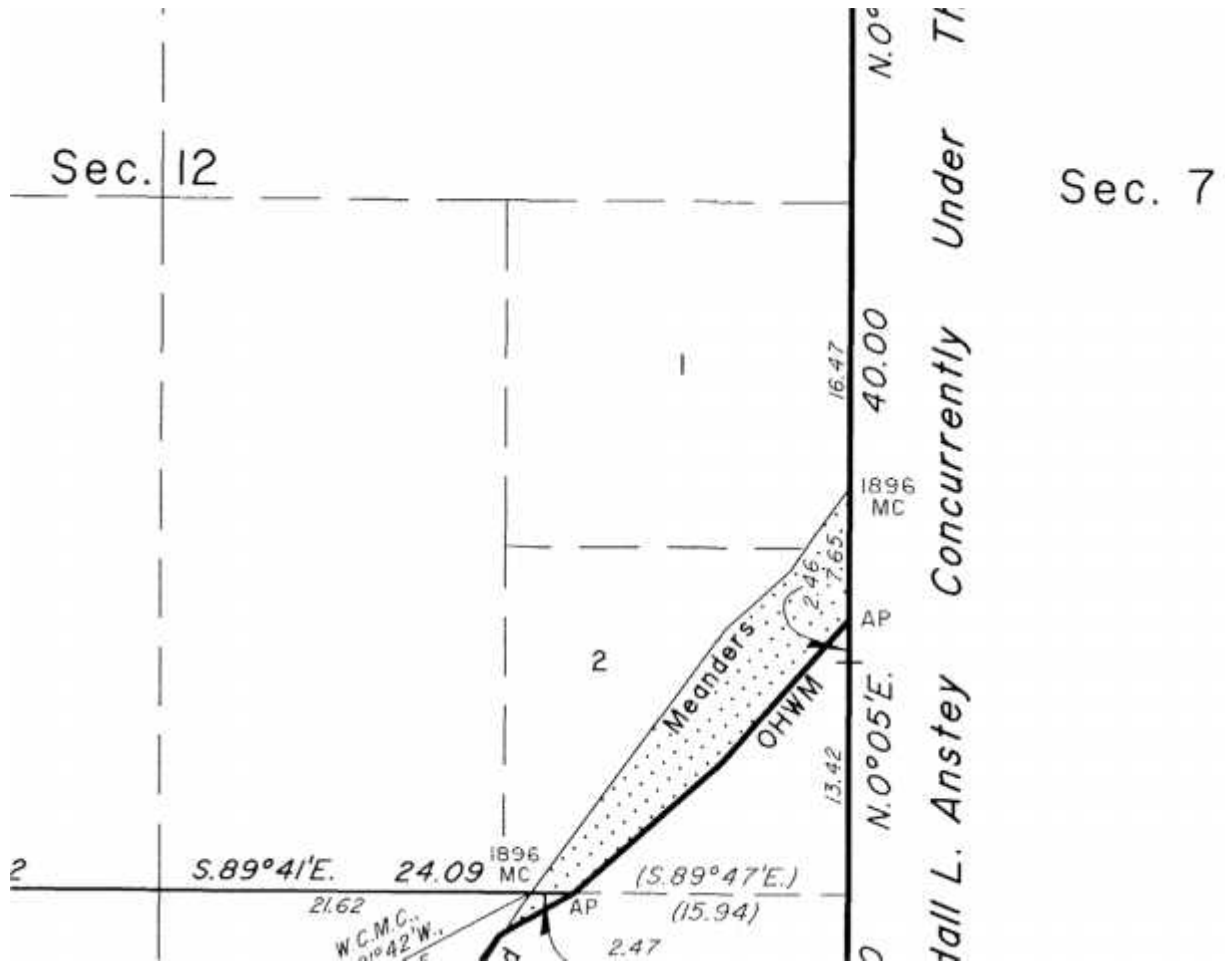
**Note:** See Exhibit "A" enlargement of the official Bureau of Land Management Plat attached.

Mark L. Bush (04/10/19)

LS 1385



Exhibit "A"



A parcel of land in section 13, situated north-easterly of lot 1 of township 12 north, range 20 east, Indian Meridian, Muskogee County, Oklahoma, and being more particularly described as follows:

**BEGINNING** at the 1897 right bank meander corner of sections 12 and 13, downstream along said meander line;

**THENCE**, S. 15° 00' E., 335.28 feet,

**THENCE**, S. 21° 14' E., 793.98 feet to the point for the meander corner of sections 13 and 18

**THENCE**, along the section line, N. 0° 05' W., 922.35 feet to the angle point of sections 13 and 18, on 2003 right bank ordinary high-water mark,

**THENCE**, upstream afore said mark, N. 55° 47' W., 93.72 feet,

**THENCE**, N. 27° 40' W., 96.89 feet to the angle point of sections 12 and 13,

**THENCE**, along the section line, N. 89° 22' W., 250.67 feet to the **POINT OF BEGINNING** containing +/- 4.62 acres.

**BASIS OF BEARINGS:** As shown on the official BLM plat, approved September 30, 2011, referenced to the true meridian.

Meaning and intending to describe the parcel derived from the Official Bureau of Land Management plats and fieldnotes of the Dependent Resurvey and Survey of the Arkansas River Bed approved September 30, 2011. The purpose of this description is to delineate the upland claim areas from the full claim areas as shown on the plat. This is exclusively for use by the Arkansas Riverbed Authority and the Cherokee Nation of Oklahoma. Accuracy and acreages defined by the original survey documentation.

**Note:** See Exhibit "A" enlargement of the official Bureau of Land Management Plat attached.

Mark L. Bush (04/10/19)

LS 1385

**Exhibit "A"**

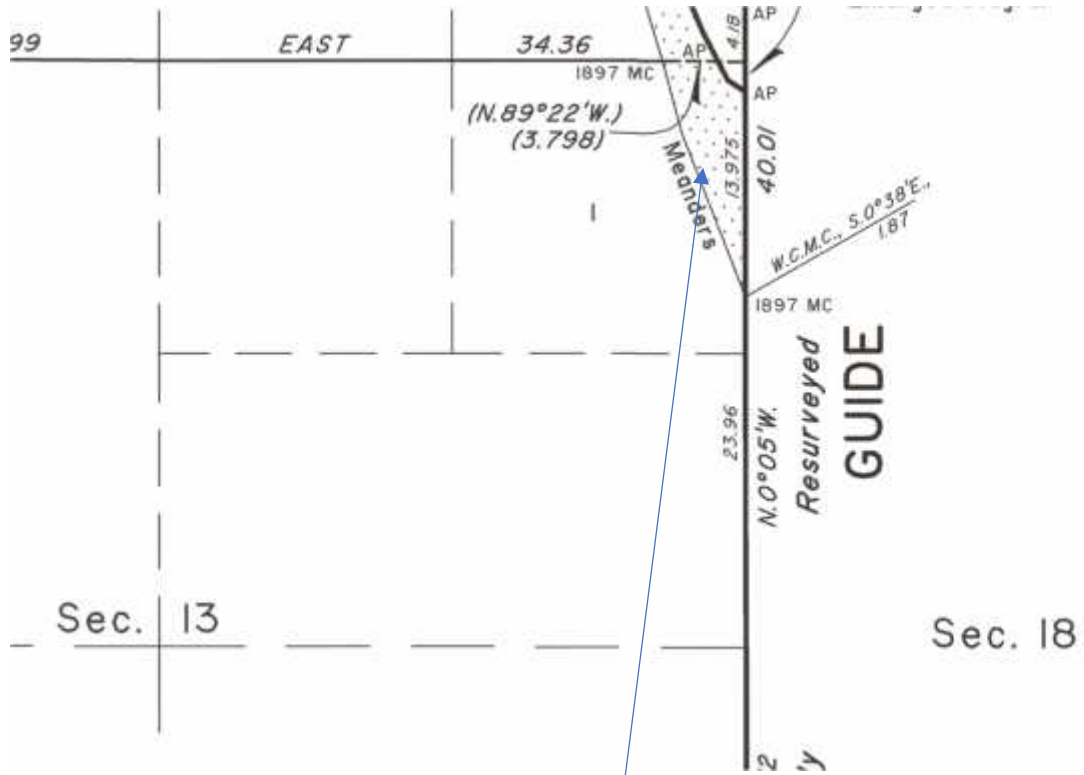


EXHIBIT A

A parcel of land situated westerly of lots 1, 4, 5 and 8, section 16 of township 15 north, range 19 east, Indian Meridian, Muskogee County, Oklahoma, and being more particularly described as follows:

**BEGINNING** at the 1896 adjusted left bank meander corner of sections 16 and 21, upstream along said meander line;

**THENCE**, N. 12° 33' E., 727.32 feet,

**THENCE**, N. 15° 03' E., 528.66 feet,

**THENCE**, N. 18° 17' E., 793.32 feet,

**THENCE**, N. 23° 47' E., 661.32 feet,

**THENCE**, N. 31° 01' E., 396.66 feet,

**THENCE**, N. 37° 25' W., 198.00 feet,

**THENCE**, N. 12° 33' E., 594.66 feet

**THENCE**, N. 15° 32' E., 991.32 feet,

**THENCE**, N. 28° 40' W., 422.40 feet to the digitized 2003 left bank ordinary high-water mark,

**THENCE**, downstream along afore said mark S. 16° 35' W., 91.74 feet,

**THENCE**, S. 59° 07' W., 149.82 feet,

**THENCE**, S. 28° 50' W., 842.16 feet,

**THENCE**, S. 5° 29' W., 211.86 feet,

**THENCE**, S. 33° 26' W., 128.04 feet,

**THENCE**, S. 10° 23' W., 806.52 feet,

**THENCE**, S. 6° 48' W., 1,261.82 feet,

**THENCE**, S. 6° 49' W., 195.36 feet,

**THENCE**, S. 1° 12' E., 680.46 feet,

**THENCE**, S. 6° 37' W., 382.14 feet,

**THENCE**, S. 13° 02' W., 104.94 feet,

**THENCE**, S. 36° 21' W., 72.60 feet,

**THENCE**, S. 3° 59' W., 301.62 feet, to the **POINT OF BEGINNING**, containing +/- 42.94 acres.

**BASIS OF BEARINGS:** As shown on the official BLM plat, approved December 19, 2012, referenced to the true meridian.

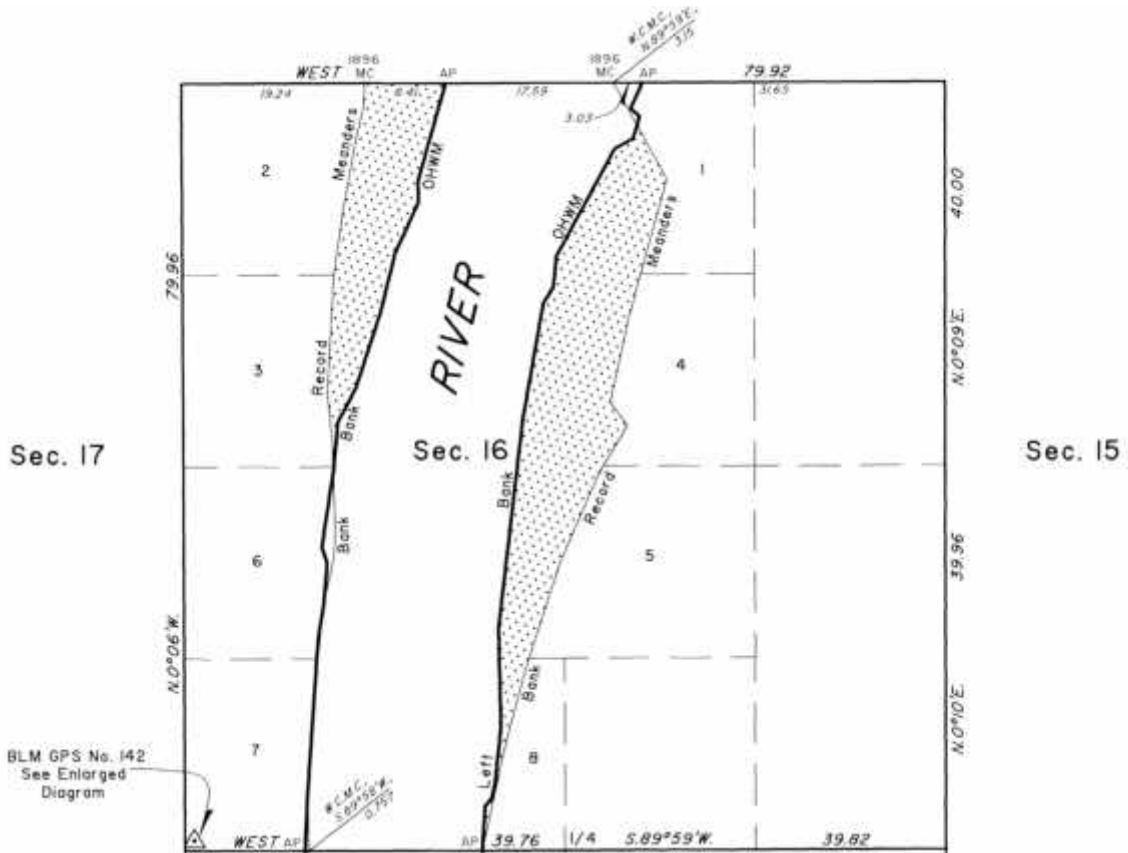
Meaning and intending to describe the parcel derived from the Official Bureau of Land Management plats and fieldnotes of the Dependent Resurvey and Survey of the Arkansas River Bed approved December 19, 2012. The purpose of this description is to delineate the upland claim areas from the full claim areas as shown on the plat. This is exclusively for use by the Arkansas Riverbed Authority and the Cherokee Nation of Oklahoma. Accuracy and acreages defined by the original survey documentation.

**Note:** See Exhibit "A" enlargement of the official Bureau of Land Management Plat attached.

Mark L. Bush (10/25/18)

LS #1385

Exhibit "A"



A parcel of land in the east half of the northwest quarter, situated easterly of lots 2 and 3, section 16 of township 15 north, range 19 east, Indian Meridian, Muskogee County, Oklahoma, and being more particularly described as follows:

**BEGINNING** at the 1896 adjusted right bank meander corner of sections 9 and 16, downstream along said meander line;

**THENCE**, S. 3° 03' W., 174.29 feet,

**THENCE**, S. 14° 34' W., 198.00 feet,

**THENCE**, S. 10° 34' W., 527.34 feet,

**THENCE**, S. 8° 03' W., 461.34 feet,

**THENCE**, S. 3° 18' W., 790.68 feet,

**THENCE**, S. 5° 28' E., 329.34 feet,

**THENCE**, S. 1° 42' E., 211.86 feet to the digitized 2003 right bank ordinary high-water mark,

**THENCE**, upstream along afore said mark N. 5° 30' E., 342.54 feet,

**THENCE**, N. 28° 41' E., 266.64 feet,

**THENCE**, N. 18° 27' E., 530.64 feet,

**THENCE**, N. 13° 55' E., 430.98 feet,

**THENCE**, N. 24° 39' E., 386.10 feet,

**THENCE**, N. 0° 17' E., 151.80 feet,

**THENCE**, N. 15° 47' E., 696.30 feet, to the angle point of sections 9 and 16,

**THENCE**, N. 90° 0' W., along the section line 555.06 feet to the **POINT OF BEGINNING**, containing +/- 20.76 acres.

**BASIS OF BEARINGS:** As shown on the official BLM plat, approved December 19, 2012, referenced to the true meridian.

Meaning and intending to describe the parcel derived from the Official Bureau of Land Management plats and fieldnotes of the Dependent Resurvey and Survey of the Arkansas River Bed approved December 19, 2012. The purpose of this description is to delineate the upland claim areas from the full claim areas as shown on the plat. This is exclusively for use by the Arkansas Riverbed Authority and the Cherokee Nation of Oklahoma. Accuracy and acreages defined by the original survey documentation.

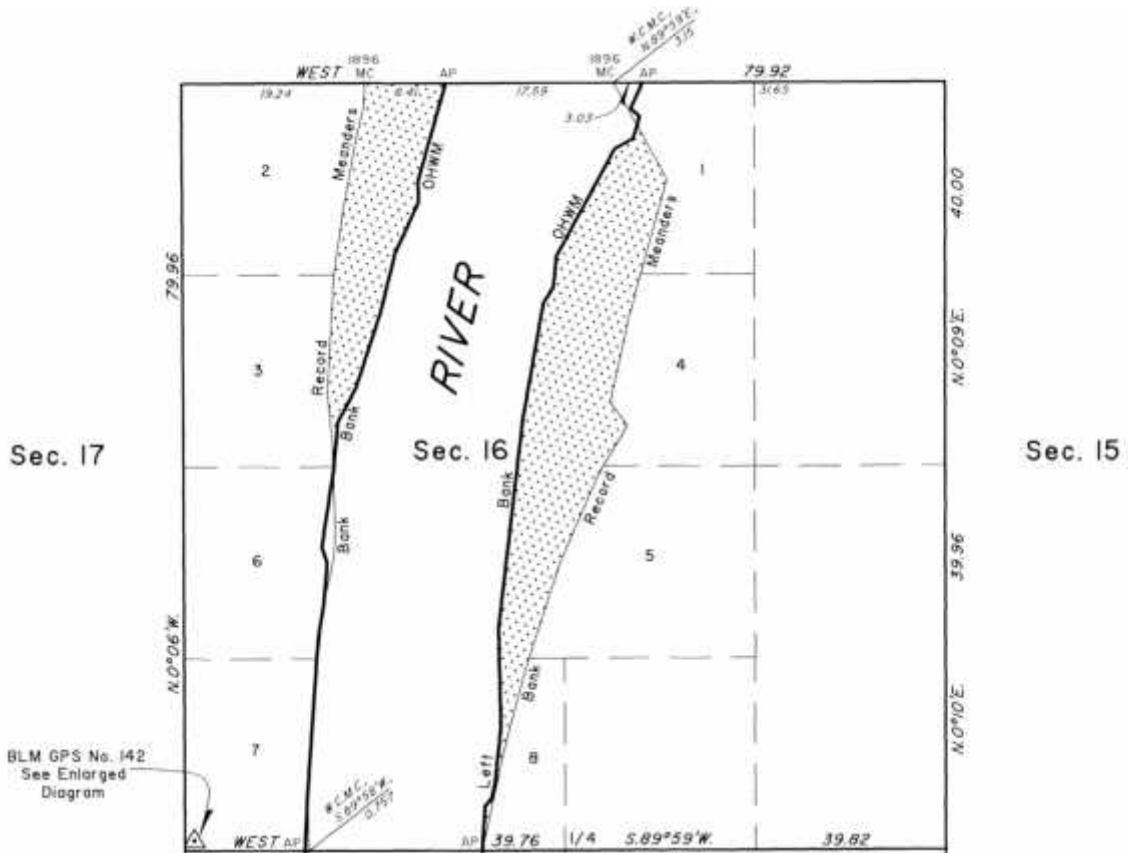
**Note:** See Exhibit "A" enlargement of the official Bureau of Land Management Plat attached.

Mark L. Bush (10/25/18)

LS #1385



Exhibit "A"



A parcel of land in the east half of the west half of section 21, situated westerly of lots 4 and 5, of township 15 north, range 19 east, Indian Meridian, Muskogee County, Oklahoma, and being more particularly described as follows:

**BEGINNING** at the 1896 adjusted left bank meander corner of sections 21 and 28, upstream along said meander line;

**THENCE**, N. 23° 35' W., 1523.94 feet,

**THENCE**, N. 18° 37' W., 927.30 feet,

**THENCE**, N. 08° 09' W., 192.38 feet, to the **POINT OF BEGINNING**,

**THENCE**, N. 08° 09' W., 799.92 feet,

**THENCE**, N. 07° 24' W., 326.70 feet to 2003 left bank ordinary high-water mark,

**THENCE**, S. 55° 15' W., 77.22 feet,

**THENCE**, S. 10° 57' E., 883.74 feet,

**THENCE**, S. 14° 05' E., 210.54 feet to the **POINT OF BEGINNING**, containing +/- 0.97 acres.

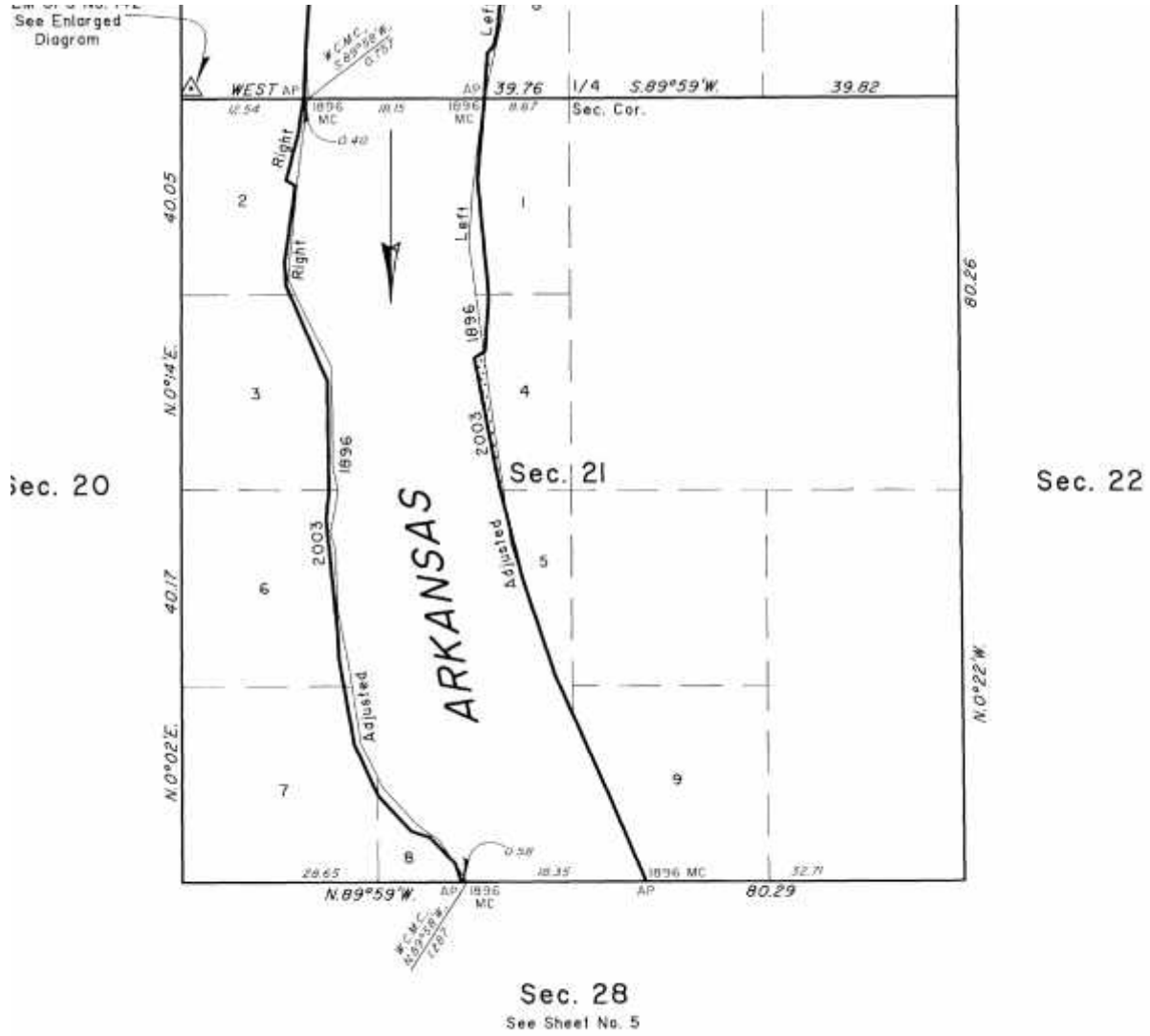
**BASIS OF BEARINGS:** As shown on the official BLM plat, approved December 19, 2012, referenced to the true meridian.

Meaning and intending to describe the parcel derived from the Official Bureau of Land Management plats and fieldnotes of the Dependent Resurvey and Survey of the Arkansas River Bed approved December 19, 2012. The purpose of this description is to delineate the upland claim areas from the full claim areas as shown on the plat. This is exclusively for use by the Arkansas Riverbed Authority and the Cherokee Nation of Oklahoma. Accuracy and acreages defined by the original survey documentation.

**Note:** See Exhibit "A" enlargement of the official Bureau of Land Management Plat attached.

Mark L. Bush (12/02/18)  
LS #1385

Exhibit "A"



### Parcel 1

A parcel of land in section 23, situated easterly of lots 3, 4 and 6 of township 14 north, range 19 east, Indian Meridian, Muskogee County, Oklahoma, and being more particularly described as follows:

**BEGINNING** at the 1896 right bank meander corner of sections 23 and 24, downstream along said meander line;

**THENCE**, downstream along afore said mark, S. 38° 19' W., 783.42 feet,

**THENCE**, S. 42° 13' W., 839.784 feet the 2003 right bank ordinary high-water mark at the **POINT OF BEGINNING**,

**THENCE**, S. 42° 13' W., 217.536 feet,

**THENCE**, S. 46° 28' W., 1,255.98 feet,

**THENCE**, S. 47° 13' W., 396.66 feet,

**THENCE**, S. 59° 41' W., 859.98 feet,

**THENCE**, S. 53° 27' W., 562.32 feet,

**THENCE**, S. 52° 27' W., 462.66 feet,

**THENCE**, S. 46° 58' W., 211.53 feet to the 2003 right bank ordinary high-water mark,

**THENCE**, upstream along afore said mark, N. 55° 59'E., 264.00 feet,

**THENCE**, N. 63° 03'E., 384.78 feet,

**THENCE**, N. 81° 36'E., 153.78 feet,

**THENCE**, N. 47° 30'E., 130.68 feet,

**THENCE**, N. 73° 27'E., 741.84 feet,

**THENCE**, N. 60° 51'E., 353.10 feet,

**THENCE**, N. 46° 12'E., 368.94 feet,

**THENCE**, N. 01° 18'E., 75.24 feet,

**THENCE**, N. 51° 55'E., 415.80 feet,

**THENCE**, N. 37° 08'E., 158.40 feet,

**THENCE**, N. 04° 56'E., 199.98 feet,

**THENCE**, N. 45° 16'E., 362.34 feet,

**THENCE**, N. 27° 51'E., 574.464 feet to the **POINT OF BEGINNING**, containing +/- 19.94 acres

**BASIS OF BEARINGS:** As shown on the official BLM plat, approved September 11, 2012, referenced to the true meridian.

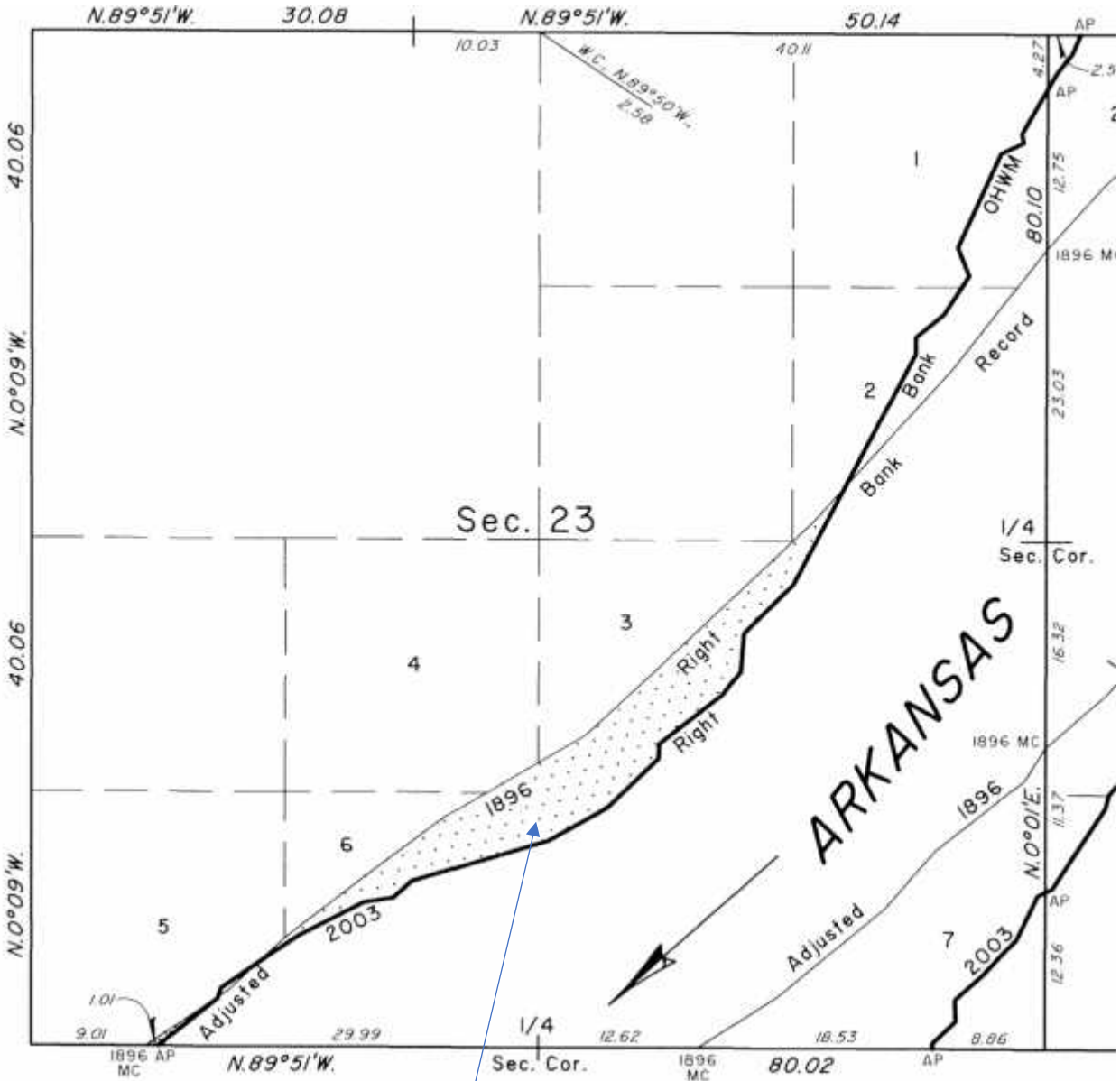
Meaning and intending to describe the parcel derived from the Official Bureau of Land Management plats and fieldnotes of the Dependent Resurvey and Survey of the Arkansas River Bed approved September 11, 2012. The purpose of this description is to delineate the upland claim areas from the full claim areas as shown on the plat. This is exclusively for use by the Arkansas Riverbed Authority and the Cherokee Nation of Oklahoma. Accuracy and acreages defined by the original survey documentation.

**Note:** See Exhibit "A" enlargement of the official Bureau of Land Management Plat attached.

Mark L. Bush (04/10/19)

LS 1385

**Exhibit "A"**



PARCEL 1

### **Parcel 1**

A parcel of land in the east half of section 25, situated easterly of lot 1, of township 15 north, range 19 east, Indian Meridian, Muskogee County, Oklahoma, and being more particularly described as follows:

**BEGINNING** at the 1896 adjusted left bank meander corner of sections 25 and 30, upstream along said meander line;

**THENCE**, N. 89° 52' W., 646.14 feet to the 2003 ordinary high-water mark,

**THENCE**, S. 81° 32' E., 652.74 feet to the angle point of sections 25 and 30,

**THENCE**, NORTH, along the section line 94.38 feet to **POINT OF BEGINNING**, containing +/- 0.70 acres.

**BASIS OF BEARINGS:** As shown on the official BLM plat, approved December 19, 2012, referenced to the true meridian.

Meaning and intending to describe the parcel derived from the Official Bureau of Land Management plats and fieldnotes of the Dependent Resurvey and Survey of the Arkansas River Bed approved December 19, 2012. The purpose of this description is to delineate the upland claim areas from the full claim areas as shown on the plat. This is exclusively for use by the Arkansas Riverbed Authority and the Cherokee Nation of Oklahoma. Accuracy and acreages defined by the original survey documentation.

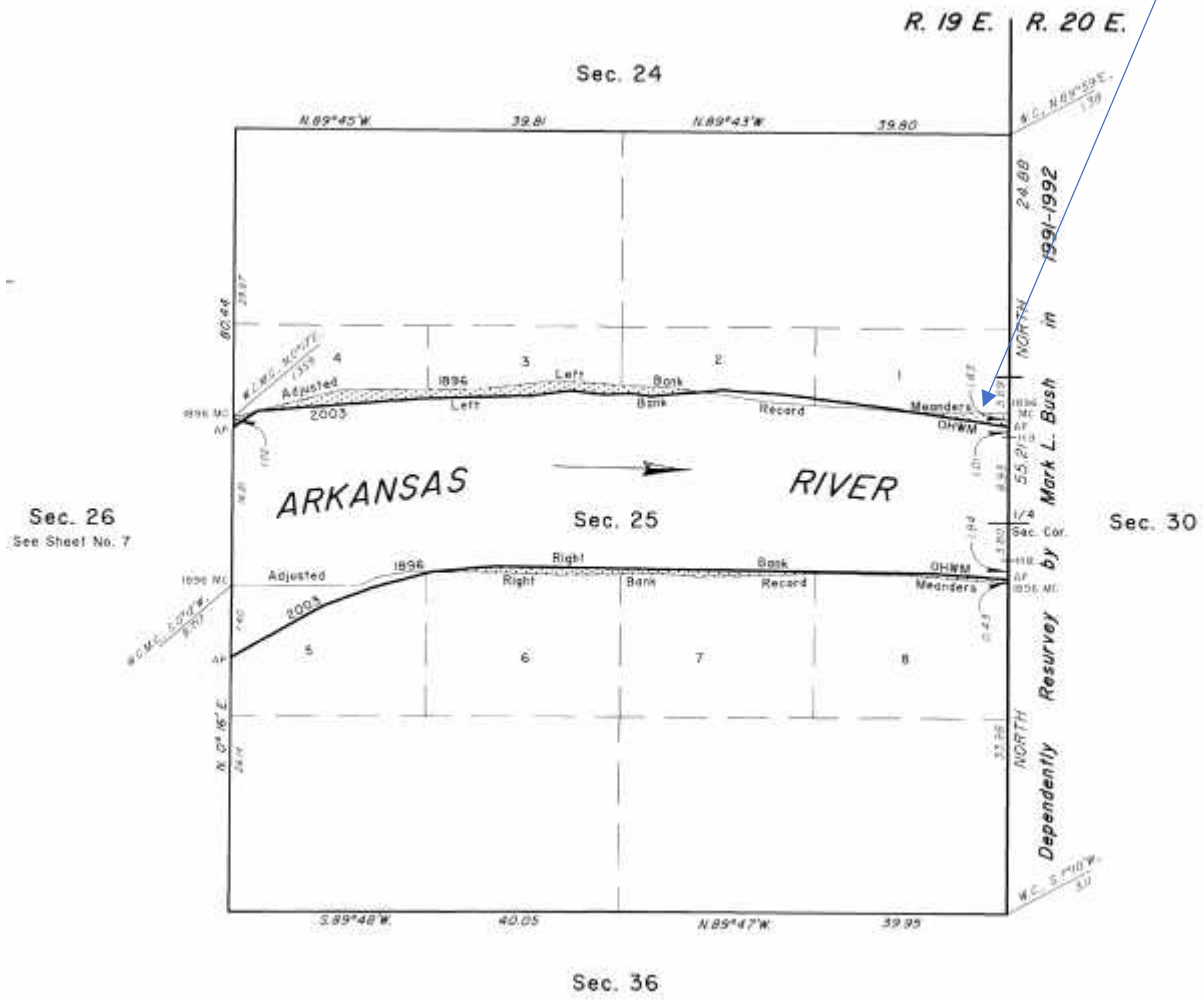
**Note:** See Exhibit "A" enlargement of the official Bureau of Land Management Plat attached.

Mark L. Bush (12/02/18)

LS #1385

# Exhibit "A"

Parcel 1





## Parcel 2

A parcel of land in the south half of the north half of section 25, situated southerly of lots 2, 3 and 4 of township 15 north, range 19 east, Indian Meridian, Muskogee County, Oklahoma, and being more particularly described as follows:

**BEGINNING** at the 1896 adjusted left bank meander corner of sections 25 and 30, upstream along said meander line;

**THENCE**, N. 89° 52' W., 706.86 feet,

**THENCE**, N. 83° 42' W., 192.06 feet,

**THENCE**, N. 86° 32' W., 384.78 feet,

**THENCE**, N. 86° 17' W., 320.76 feet,

**THENCE**, N. 81° 54' W., 483.78 feet to the **POINT OF BEGINNING**,

**THENCE**, N. 81° 54' W., 157.08 feet,

**THENCE**, N. 86° 47' W., 320.76 feet,

**THENCE**, N. 85° 30' W., 192.72 feet,

**THENCE**, N. 86° 32' W., 320.76 feet,

**THENCE**, S. 83° 43' W., 514.80 feet,

**THENCE**, S. 89° 21' W., 449.46 feet,

**THENCE**, S. 88° 51' W., 514.14 feet,

**THENCE**, S. 75° 32' W., 569.58 feet, to the 2003 left bank ordinary high-water mark,

**THENCE**, downstream along afore said mark, N. 85° 28' E., 1,104.18 feet,

**THENCE**, N. 88° 14' E., 760.98 feet,

**THENCE**, N. 82° 17' E., 262.68 feet,

**THENCE**, S. 82° 51' E., 216.48 feet,

**THENCE**, N. 87° 45' E., 193.38 feet,

**THENCE**, S. 82° 14' E., 130.02 feet,

**THENCE**, N. 85° 08' E., 357.06 feet to the **POINT OF BEGINNING**, containing +/- 4.38 acres.

**BASIS OF BEARINGS:** As shown on the official BLM plat, approved December 19, 2012, referenced to the true meridian.

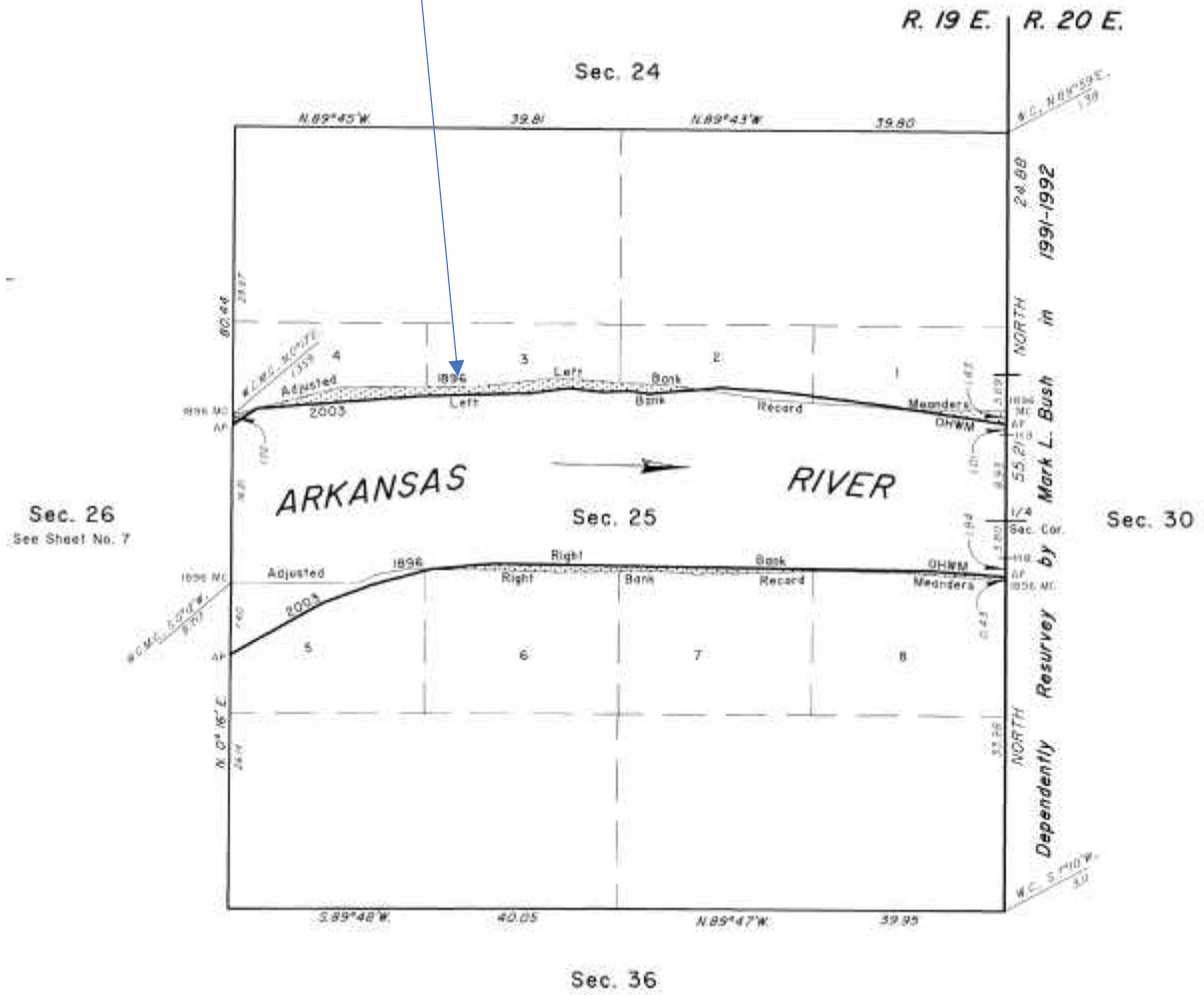
Meaning and intending to describe the parcel derived from the Official Bureau of Land Management plats and fieldnotes of the Dependent Resurvey and Survey of the Arkansas River Bed approved December 19, 2012. The purpose of this description is to delineate the upland claim areas from the full claim areas as shown on the plat. This is exclusively for use by the Arkansas Riverbed Authority and the Cherokee Nation of Oklahoma. Accuracy and acreages defined by the original survey documentation.

**Note:** See Exhibit "A" enlargement of the official Bureau of Land Management Plat attached.

Mark L. Bush (12/02/18)  
LS #1385

# Exhibit "A"

Parcel 2



### Parcel 3

A parcel of land in the west half of section 25, situated southerly of lot 4, of township 15 north, range 19 east, Indian Meridian, Muskogee County, Oklahoma, and being more particularly described as follows:

**BEGINNING** at the point for the 1896 adjusted left bank meander corner of sections 25 and 26, downstream along said meander line;

**THENCE**, N. 75° 32' E., 173.53 feet to the 2003 left bank ordinary high-water mark,

**THENCE**, upstream along afore said mark S. 56° 39' W., 201.96 feet to the angle point of sections 25 and 26,

**THENCE**, N. 0° 16' E., along the section line 67.32 feet to **POINT OF BEGINNING**, containing +/- 0.13 acres.

**BASIS OF BEARINGS:** As shown on the official BLM plat, approved December 19, 2012, referenced to the true meridian.

Meaning and intending to describe the parcel derived from the Official Bureau of Land Management plats and fieldnotes of the Dependent Resurvey and Survey of the Arkansas River Bed approved December 19, 2012. The purpose of this description is to delineate the upland claim areas from the full claim areas as shown on the plat. This is exclusively for use by the Arkansas Riverbed Authority and the Cherokee Nation of Oklahoma. Accuracy and acreages defined by the original survey documentation.

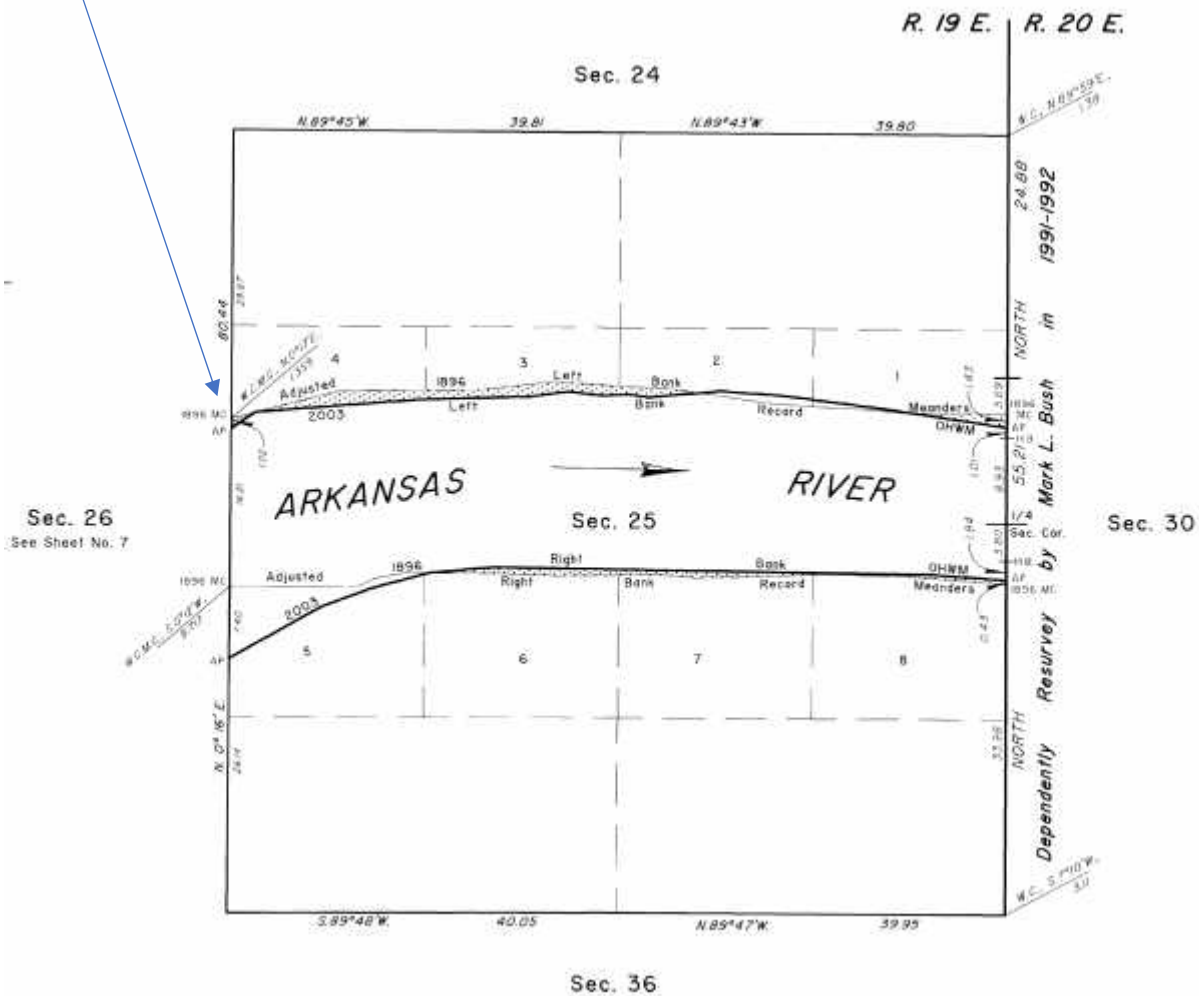
**Note:** See Exhibit "A" enlargement of the official Bureau of Land Management Plat attached.

Mark L. Bush (12/02/18)

LS #1385

Exhibit "A"

Parcel 3



A parcel of land in the south half of section 25, situated northerly of lots 6, 7, and 8, of township 15 north, range 19 east, Indian Meridian, Muskogee County, Oklahoma, and being more particularly described as follows:

**BEGINNING** at the 1896 adjusted right bank meander corner of sections 25 and 30, upstream along said meander line;

**THENCE**, N. 85° 36' W., 659.34 feet,

**THENCE**, N. 88° 22' W., 593.34 feet,

**THENCE**, S. 87° 38' W., 527.34 feet,

**THENCE**, S. 88° 53' W., 329.34 feet,

**THENCE**, N. 85° 21' W., 264.00 feet,

**THENCE**, S. 89° 08' W., 659.34 feet,

**THENCE**, N. 88° 22' W., 461.34 feet,

**THENCE**, N. 89° 52' W., 423.06 feet to the 2003 right bank ordinary high-water mark,

**THENCE**, upstream along afore said mark, N. 84° 36' E., 427.68 feet,

**THENCE**, S. 89° 13' E., 2,960.76 feet,

**THENCE**, S. 86° 03' E., 527.34 feet to the angle point of sections 25 and 30,

**THENCE**, SOUTH, along the section line 28.38 feet to the **POINT OF BEGINNING**, containing +/- 2.59 acres.

**BASIS OF BEARINGS:** As shown on the official BLM plat, approved December 19, 2012, referenced to the true meridian.

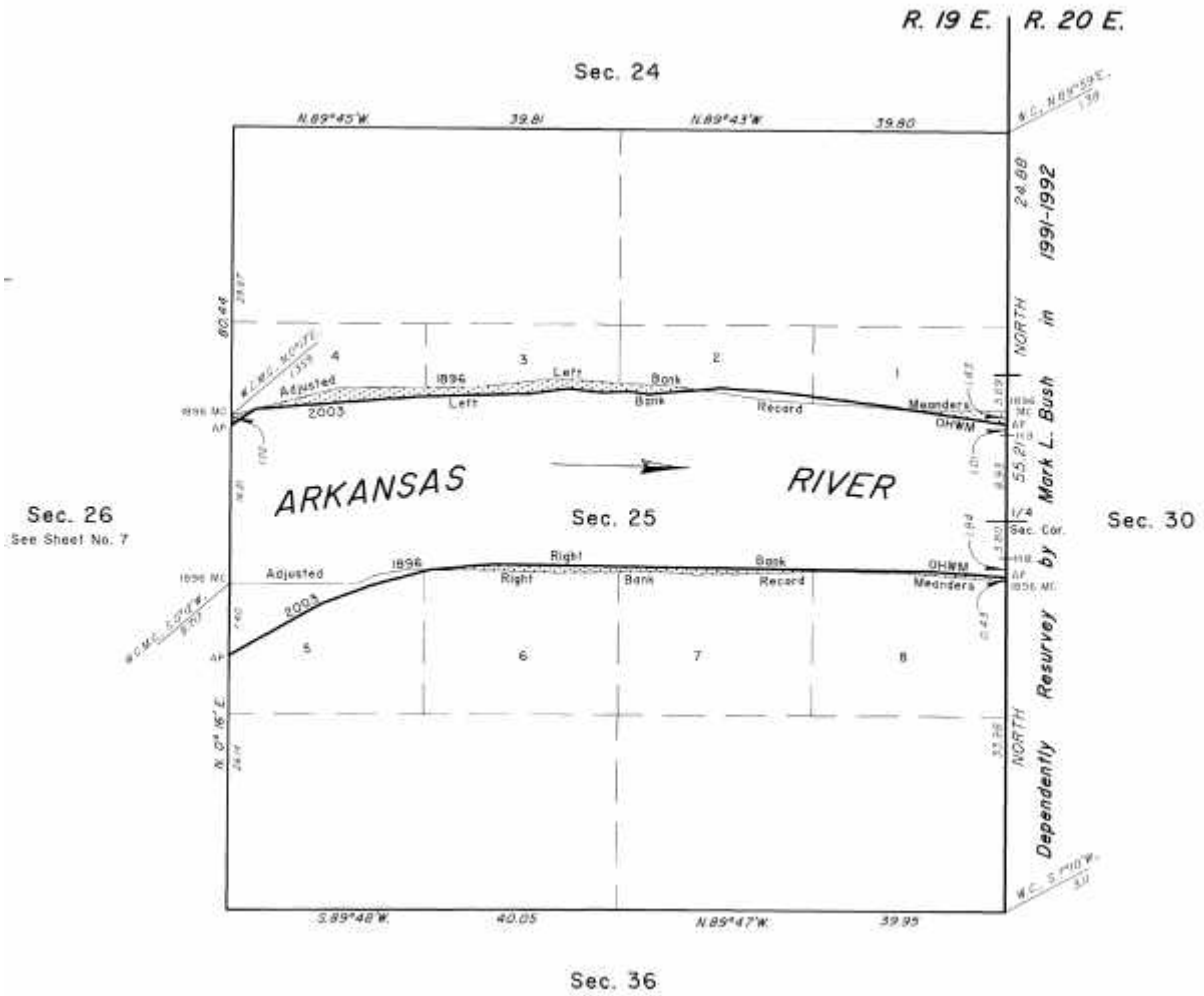
Meaning and intending to describe the parcel derived from the Official Bureau of Land Management plats and fieldnotes of the Dependent Resurvey and Survey of the Arkansas River Bed approved December 19, 2012. The purpose of this description is to delineate the upland claim areas from the full claim areas as shown on the plat. This is exclusively for use by the Arkansas Riverbed Authority and the Cherokee Nation of Oklahoma. Accuracy and acreages defined by the original survey documentation.

**Note:** See Exhibit "A" enlargement of the official Bureau of Land Management Plat attached.

Mark L. Bush (12/02/18)

LS #1385

Exhibit "A"



A parcel of land in of section 26, situated southerly of lots 1, 2, 3 and 4, of township 15 north, range 19 east, Indian Meridian, Muskogee County, Oklahoma, and being more particularly described as follows:

**BEGINNING** at the point for the 1896 adjusted left bank meander corner of sections 25 and 26, upstream along said meander line;

**THENCE**, S. 87° 43' W., 1,019.04 feet,

**THENCE**, S. 78° 58' W., 529.32 feet,

**THENCE**, S. 69° 29' W., 198.66 feet,

**THENCE**, S. 80° 57' W., 529.32 feet,

**THENCE**, S. 76° 43' W., 463.32 feet,

**THENCE**, S. 67° 00' W., 926.64 feet,

**THENCE**, S. 62° 00' W., 992.64 feet,

**THENCE**, S. 68° 59' W., 926.64 feet, to 1896 adjusted left bank meander corner of sections 26 and 27,

**THENCE**, S. 0° 03' W., 1,275.12 feet along the section line to the angle point of sections of 26 and 27,

**THENCE**, downstream along afore said mark N. 70° 32' E., 246.18 feet,

**THENCE**, S. 82° 50' E., 176.22 feet,

**THENCE**, N. 75° 17' E., 75.24 feet,

**THENCE**, S. 89° 39' E., 236.94 feet,

**THENCE**, N. 69° 25' E., 634.92 feet,

**THENCE**, N. 37° 37' E., 89.10 feet,

**THENCE**, N. 56° 19' E., 880.44 feet,

**THENCE**, N. 83° 55' E., 83.82 feet,

**THENCE**, N. 69° 03' E., 553.08 feet,

**THENCE**, N. 57° 58' E., 994.62 feet,

**THENCE**, N. 64° 41' E., 59.40 feet,

**THENCE**, S. 79° 41' E., 90.42 feet,

**THENCE**, N. 69° 43' E., 422.40 feet,

**THENCE**, N. 26° 44' E., 62.04 feet,

**THENCE**, N. 48° 33' W., 47.52 feet,

**THENCE**, N. 84° 01' W., 109.56 feet,



**THENCE**, N. 55° 00' E., 523.38 feet,

**THENCE**, N. 25° 15' E., 48.84 feet,

**THENCE**, N. 56° 39' E., 1,052.04, to the angle point of sections 25 and 26,

**THENCE**, N. 0° 16' E., along the section line 67.32 feet to **POINT OF BEGINNING**, containing +/- 140.86 acres.

**BASIS OF BEARINGS:** As shown on the official BLM plat, approved December 19, 2012, referenced to the true meridian.

Meaning and intending to describe the parcel derived from the Official Bureau of Land Management plats and fieldnotes of the Dependent Resurvey and Survey of the Arkansas River Bed approved December 19, 2012. The purpose of this description is to delineate the upland claim areas from the full claim areas as shown on the plat. This is exclusively for use by the Arkansas Riverbed Authority and the Cherokee Nation of Oklahoma. Accuracy and acreages defined by the original survey documentation.

**Note:** See Exhibit "A" enlargement of the official Bureau of Land Management Plat attached.

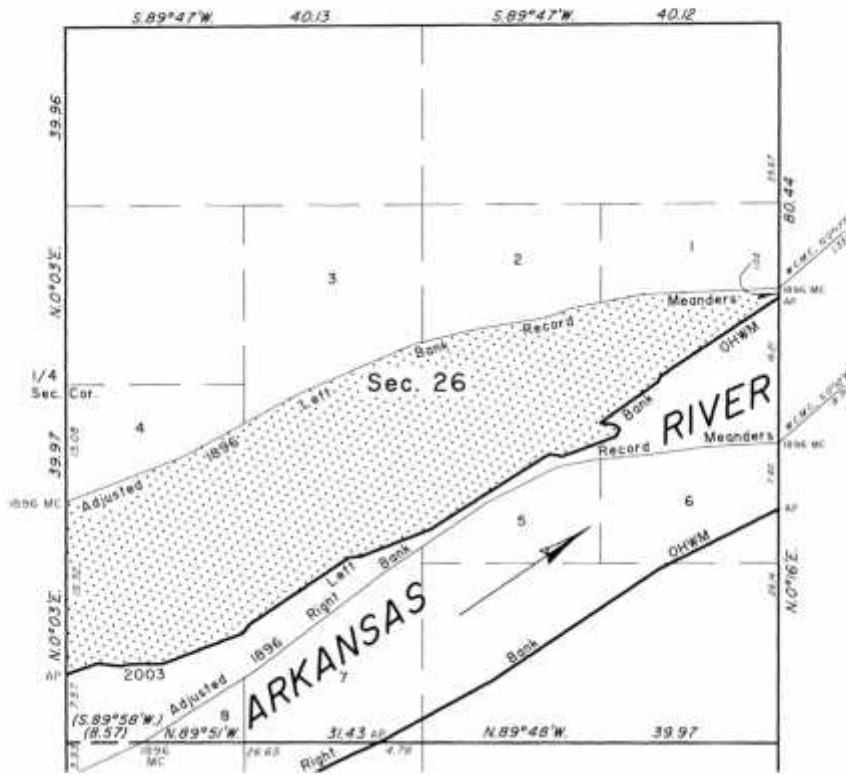
Mark L. Bush (12/02/18)

LS #1385

Exhibit "A"

Sec. 22

Sec. 27  
See Sheet No. 6



Sec. 25  
See Sheet No. 8

A parcel of land in the south half of section 27, situated southerly of lots 1, 2, 3 and 4, of township 15 north, range 19 east, Indian Meridian, Muskogee County, Oklahoma, and being more particularly described as follows:

**BEGINNING** at the 1896 adjusted left bank meander corner of sections 26 and 27, upstream along said meander line;

**THENCE**, S. 60° 34' W., 526.68 feet,

**THENCE**, S. 72° 36' W., 527.34 feet,

**THENCE**, S. 78° 51' W., 1,318.68 feet,

**THENCE**, N. 84° 09' W., 726.66 feet,

**THENCE**, N. 71° 40' W., 661.32 feet,

**THENCE**, N. 66° 10' W., 793.98 feet,

**THENCE**, N. 52° 43' W., 1,192.62 feet to 1896 adjusted left bank meander corner of sections 27 and 28,

**THENCE**, S. 0° 03' W., 747.12 feet to the AP sections of 27 and 28,

**THENCE**, downstream along afore said mark S. 29° 32' E., 227.70 feet,

**THENCE**, S. 35° 47' E., 345.18 feet,

**THENCE**, S. 48° 27' E., 298.32 feet,

**THENCE**, S. 56° 23' E., 316.80 feet,

**THENCE**, S. 63° 52' E., 515.46 feet,

**THENCE**, S. 57° 19' E., 167.64 feet,

**THENCE**, S. 75° 04' E., 312.84 feet,

**THENCE**, S. 68° 51' E., 403.92 feet,

**THENCE**, S. 05° 21' E., 49.50 feet,

**THENCE**, S. 74° 01' E., 514.14 feet,

**THENCE**, S. 84° 58' E., 631.62 feet,

**THENCE**, N. 88° 11' E., 518.10 feet,

**THENCE**, N. 75° 43' E., 1,098.90 feet,

**THENCE**, N. 70° 32' E., 514.80 feet to AP sections 26 and 27,

**THENCE**, N. 0° 03' E., 1,275.12 feet to **POINT OF BEGINNING**, containing +/- 128.57 acres.

**BASIS OF BEARINGS:** As shown on the official BLM plat, approved December 19, 2012, referenced to the true meridian.

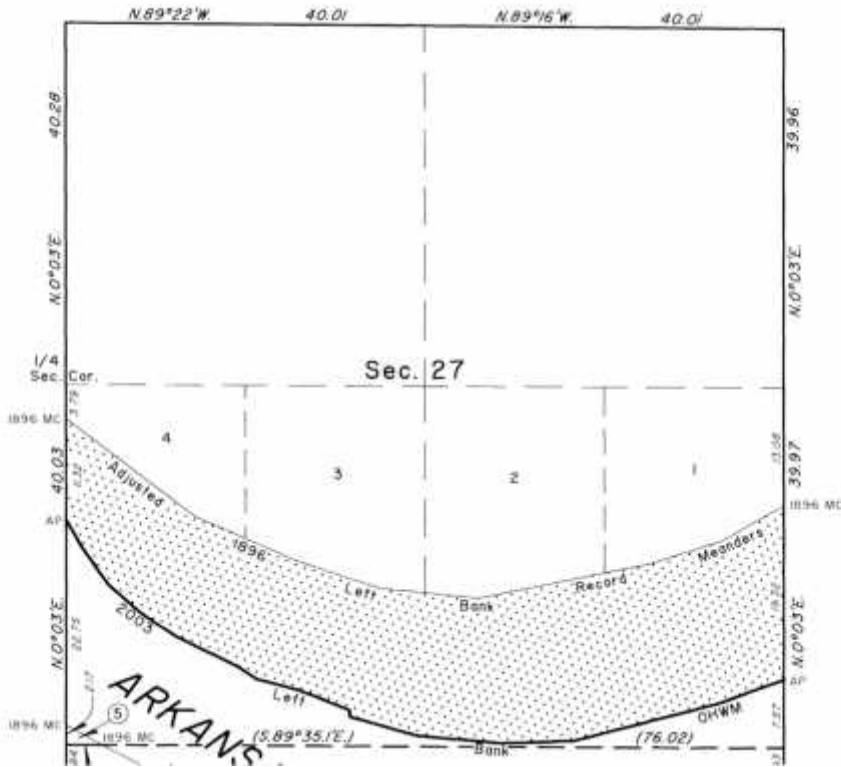
Meaning and intending to describe the parcel derived from the Official Bureau of Land Management plats and fieldnotes of the Dependent Resurvey and Survey of the Arkansas River Bed approved December 19, 2012. The purpose of this description is to delineate the upland claim areas from the full claim areas as shown on the plat. This is exclusively for use by the Arkansas Riverbed Authority and the Cherokee Nation of Oklahoma. Accuracy and acreages defined by the original survey documentation.

**Note:** See Exhibit "A" enlargement of the official Bureau of Land Management Plat attached.

Mark L. Bush (11/25/18)  
LS #1385

# Exhibit "A"

Sec. 28  
See Sheet No. 5



Sec. 26  
See Sheet No. 7

A parcel of land in the east half of the east half of section 28, situated westerly of lot 5, of township 15 north, range 19 east, Indian Meridian, Muskogee County, Oklahoma, and being more particularly described as follows:

**BEGINNING** at the 1896 adjusted left bank meander corner of sections 27 and 28, upstream along said meander line;

**THENCE**, N. 67° 28' W., 264.66 feet,

**THENCE**, N. 48° 17' W., 927.30 feet,

**THENCE**, N. 31° 36' W., 507.14 feet, to 2003 left bank ordinary high-water mark,

**THENCE**, S. 28° 28' E., 630.30 feet,

**THENCE**, S. 45° 58' E., 281.82 feet,

**THENCE**, S. 34° 41' E., 157.74 feet,

**THENCE**, S. 29° 02' E., 335.94 feet,

**THENCE**, S. 46° 01' E., 109.56 feet,

**THENCE**, S. 29° 32' E., 744.48 feet to AP sections 27 and 28,

**THENCE**, N. 0° 03' E., 747.12 feet to the **POINT OF BEGINNING**, containing +/- 6.68 acres.

**BASIS OF BEARINGS:** As shown on the official BLM plat, approved December 19, 2012, referenced to the true meridian.

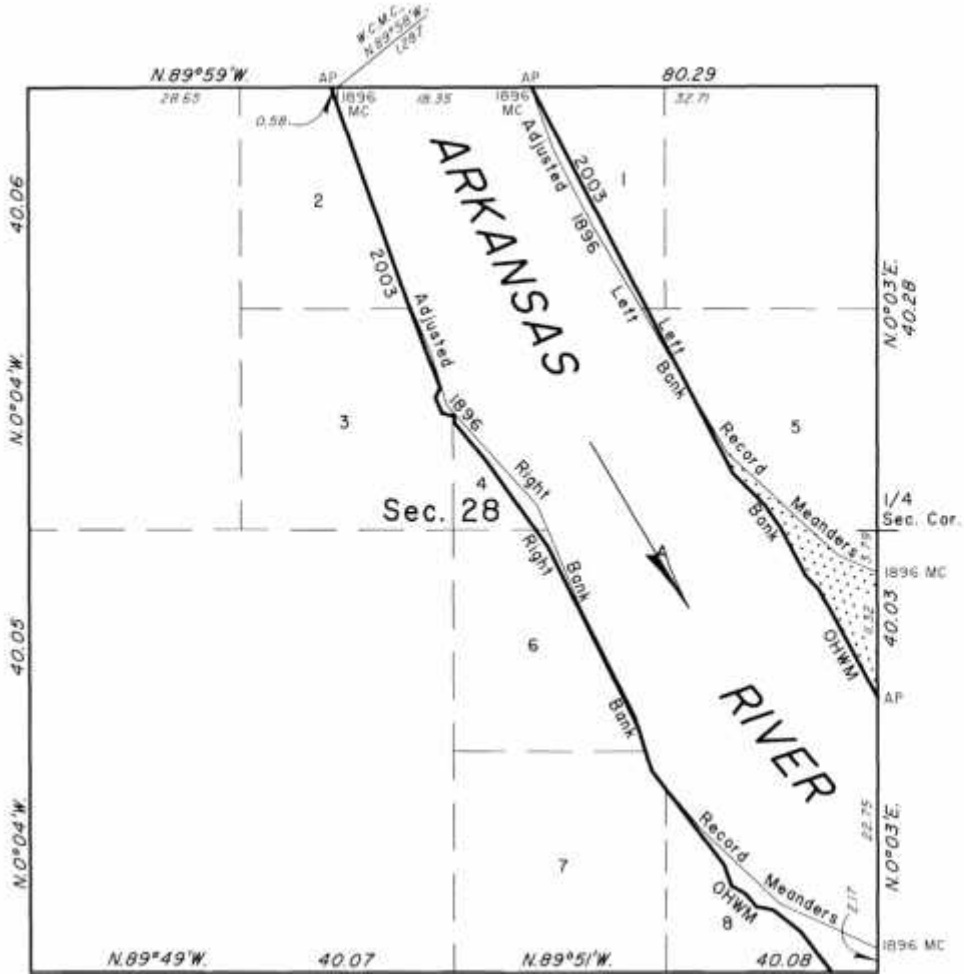
Meaning and intending to describe the parcel derived from the Official Bureau of Land Management plats and fieldnotes of the Dependent Resurvey and Survey of the Arkansas River Bed approved December 19, 2012. The purpose of this description is to delineate the upland claim areas from the full claim areas as shown on the plat. This is exclusively for use by the Arkansas Riverbed Authority and the Cherokee Nation of Oklahoma. Accuracy and acreages defined by the original survey documentation.

**Note:** See Exhibit "A" enlargement of the official Bureau of Land Management Plat attached.

Mark L. Bush (12/02/18)

LS #1385

Exhibit "A"



Sec. 27  
See Sheet No. 6

### **Parcel 1**

A parcel of land in the west half of section 30, situated southerly of lot 2, of township 15 north, range 20 east, Indian Meridian, Muskogee County, Oklahoma, and being more particularly described as follows:

**BEGINNING** at the 1896 adjusted left bank meander corner of sections 25 and 30, downstream along said meander line;

**THENCE**, S. 81° 09'E., 335.94 feet to the 2003 left bank ordinary high-water mark,

**THENCE**, S. 82° 42' W., 335.28 feet to the angle point of sections 25 and 30,

**THENCE**, NORTH, along the section line 94.38 feet to **POINT OF BEGINNING**, containing +/- 0.36 acres.

**BASIS OF BEARINGS:** As shown on the official BLM plat, approved September 28, 2012, referenced to the true meridian.

Meaning and intending to describe the parcel derived from the Official Bureau of Land Management plats and fieldnotes of the Dependent Resurvey and Survey of the Arkansas River Bed approved September 28, 2012. The purpose of this description is to delineate the upland claim areas from the full claim areas as shown on the plat. This is exclusively for use by the Arkansas Riverbed Authority and the Cherokee Nation of Oklahoma. Accuracy and acreages defined by the original survey documentation.

**Note:** See Exhibit "A" enlargement of the official Bureau of Land Management Plat attached.

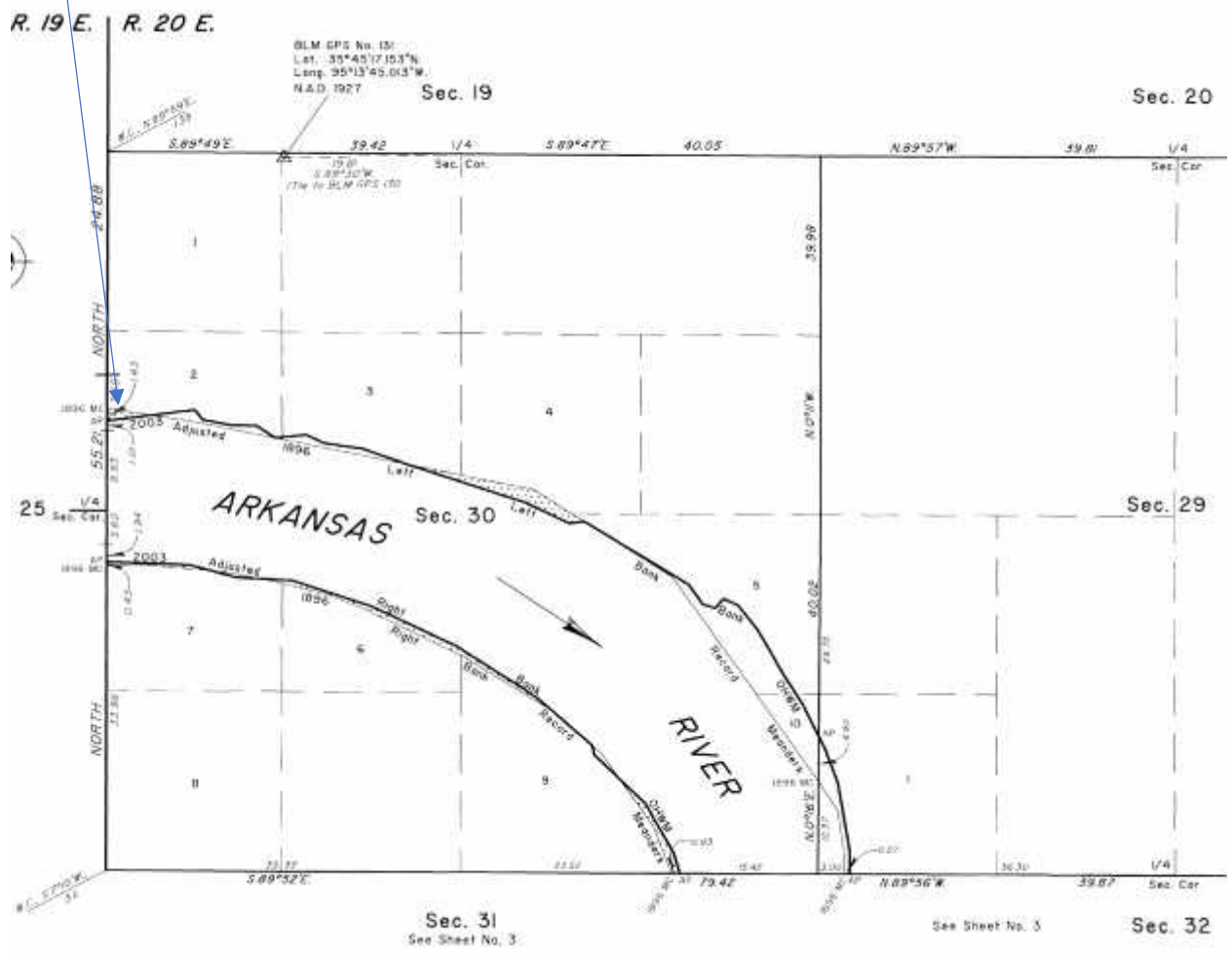
Mark L. Bush (12/02/18)

LS #1385



# Exhibit "A"

Parcel 1



## Parcel 2

A parcel of land in the south half of the north half of section 30, situated southerly of lots 3 and 4, of township 15 north, range 20 east, Indian Meridian, Muskogee County, Oklahoma, and being more particularly described as follows:

**BEGINNING** at the 1896 adjusted left bank meander corner of sections 25 and 30, downstream along said meander line;

**THENCE**, S. 81° 09' E., 335.94 feet to the 2003 left bank ordinary high-water mark,

**THENCE**, S. 81° 09' E., 343.20 feet,

**THENCE**, S. 78° 55' E., 1,568.82 feet to the **POINT OF BEGINNING**,

**THENCE**, S. 78° 55' E., 947.76 feet,

**THENCE**, S. 57° 58' E., 442.86 feet to the 2003 left bank ordinary high-water mark,

**THENCE**, upstream along afore said mark, S. 83° 14' W., 110.22 feet,

**THENCE**, N. 65° 03' W., 357.06 feet,

**THENCE**, N. 72° 14' W., 916.08 feet to the **POINT OF BEGINNING**, containing +/- 1.97 acres.

**BASIS OF BEARINGS:** As shown on the official BLM plat, approved September 28, 2012, referenced to the true meridian.

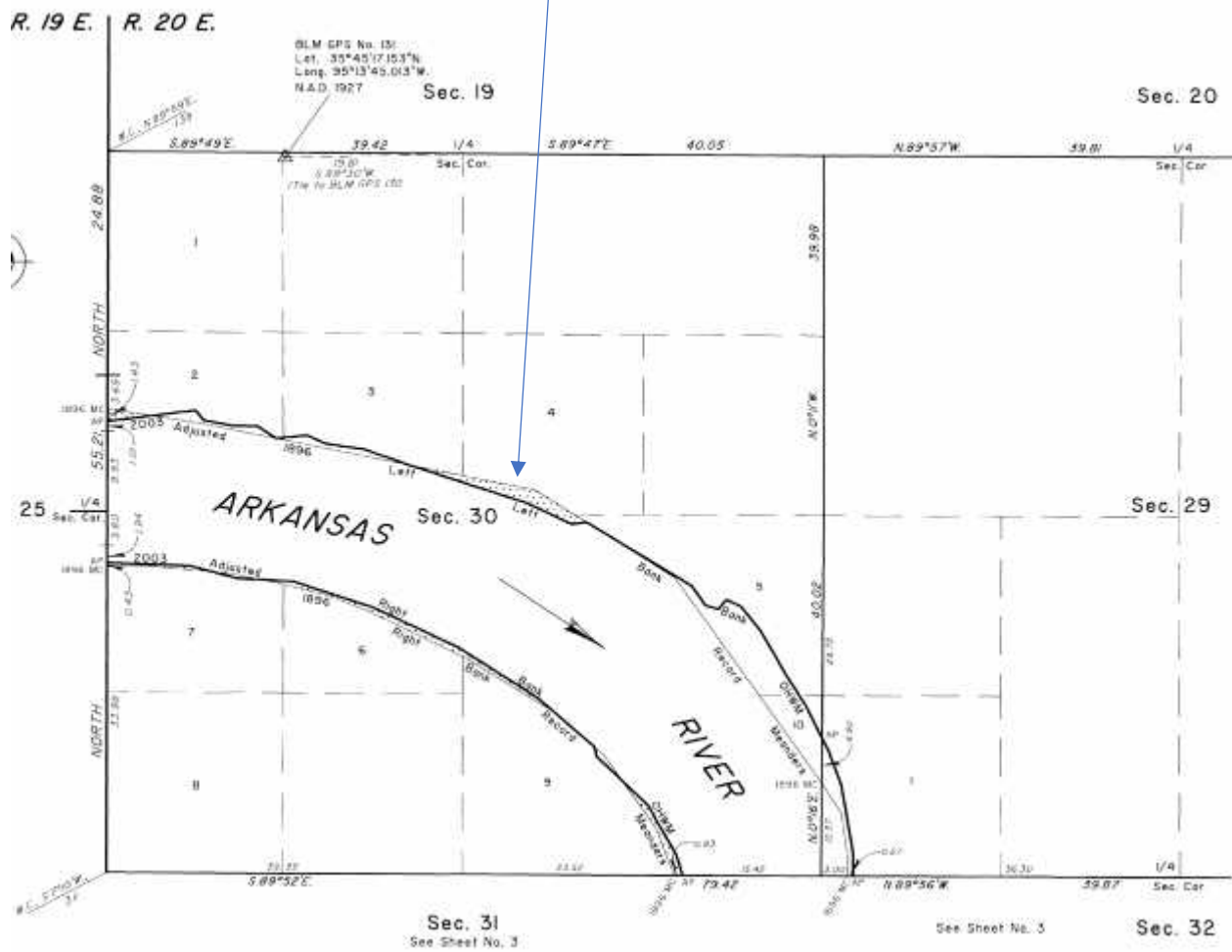
Meaning and intending to describe the parcel derived from the Official Bureau of Land Management plats and fieldnotes of the Dependent Resurvey and Survey of the Arkansas River Bed approved September 28, 2012. The purpose of this description is to delineate the upland claim areas from the full claim areas as shown on the plat. This is exclusively for use by the Arkansas Riverbed Authority and the Cherokee Nation of Oklahoma. Accuracy and acreages defined by the original survey documentation.

**Note:** See Exhibit "A" enlargement of the official Bureau of Land Management Plat attached.

Mark L. Bush (12/02/18)  
LS #1385

Exhibit "A"

Parcel 2



### Parcel 1

A parcel of land in the west half of section 30, situated northerly of lot 7, of township 15 north, range 20 east, Indian Meridian, Muskogee County, Oklahoma, and being more particularly described as follows:

**BEGINNING** at the 1896 right bank meander corner of sections 25 and 30, downstream along said meander line;

**THENCE**, N. 87° 30' E., 163.68 feet,

**THENCE**, N. 89° 47' E., 130.68 feet,

**THENCE**, S. 84° 55' E., 475.20 feet to the 2003 ordinary high-water mark,

**THENCE**, upstream along afore said mark, N. 75° 25' W., 169.62 feet,

**THENCE**, N. 88° 07' W., 603.90 feet to the angle point of sections 25 and 30,

**THENCE**, S. 00° 00' E., 28.38 feet along the section line to the **POINT OF BEGINNING**, containing +/- 0.31 acres.

**BASIS OF BEARINGS:** As shown on the official BLM plat, approved September 28, 2012, referenced to the true meridian.

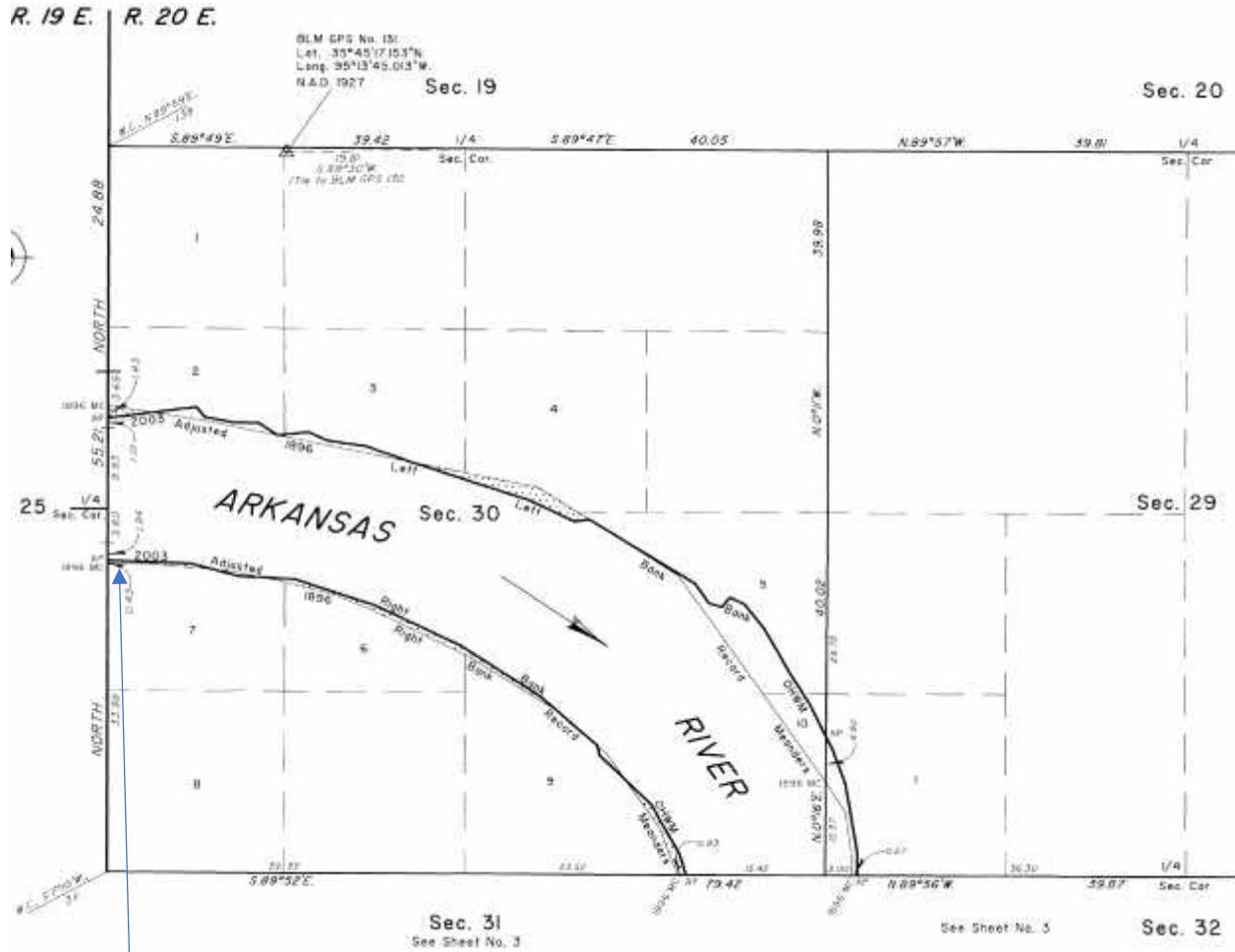
Meaning and intending to describe the parcel derived from the Official Bureau of Land Management plats and fieldnotes of the Dependent Resurvey and Survey of the Arkansas River Bed approved September 28, 2012. The purpose of this description is to delineate the upland claim areas from the full claim areas as shown on the plat. This is exclusively for use by the Arkansas Riverbed Authority and the Cherokee Nation of Oklahoma. Accuracy and acreages defined by the original survey documentation.

**Note:** See Exhibit "A" enlargement of the official Bureau of Land Management Plat attached.

Mark L. Bush (03/07/19)

LS #1385

# Exhibit "A"



**PARCEL 1**

## Parcel 2

A parcel of land in the south western half of section 30, situated northerly of lots 6 and 9, of township 15 north, range 20 east, Indian Meridian, Muskogee County, Oklahoma, and being more particularly described as follows:

**BEGINNING** at the point for the 1896 right bank meander corner of sections 25 and 30, downstream along said meander line;

**THENCE**, N. 87° 30' E., 163.68 feet,

**THENCE**, N 89° 47' E., 130.68 feet,

**THENCE**, S. 84° 55' E., 475.20 feet to the 2003 ordinary high-water mark,

**THENCE**, S. 84° 55' E., 47.52 feet,

**THENCE**, S. 83° 25' E., 104.28 feet,

**THENCE**, S. 78° 52' E., 217.14 feet to the 2003 ordinary high-water mark at the **POINT OF BEGINNING**,

**THENCE**, S. 78° 52' E., 109.56 feet,

**THENCE**, S. 76° 20' E., 392.04 feet,

**THENCE**, S. 69° 01' E., 326.70 feet,

**THENCE**, S. 64° 13' E., 784.08 feet,

**THENCE**, S. 58° 55' E., 718.74 feet,

**THENCE**, S. 49° 50' E., 432.96 feet to the 2003 ordinary high-water mark,

**THENCE**, upstream along afore said mark, N. 49° 18' W., 547.80 feet,

**THENCE**, N. 57° 40' W., 694.98 feet,

**THENCE**, N. 65° 04' W., 687.06 feet,

**THENCE**, N. 71° 59' W., 616.44 feet,

**THENCE**, N. 86° 56' W., 234.30 feet to the **POINT OF BEGINNING**, containing +/- 1.68 acres.

**BASIS OF BEARINGS:** As shown on the official BLM plat, approved September 28, 2012, referenced to the true meridian.

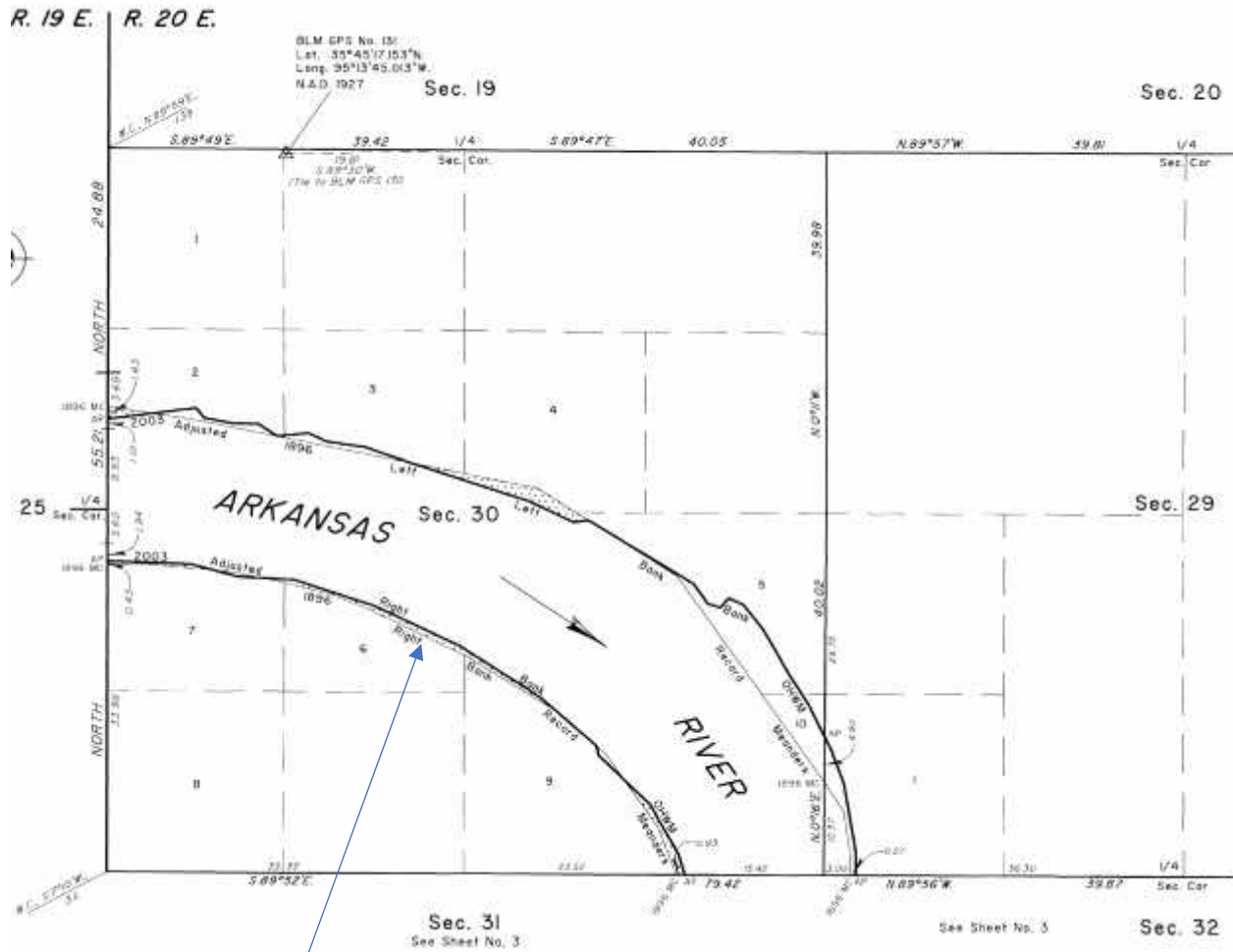
Meaning and intending to describe the parcel derived from the Official Bureau of Land Management plats and fieldnotes of the Dependent Resurvey and Survey of the Arkansas River Bed approved September 28, 2012. The purpose of this description is to delineate the upland claim areas from the full claim areas as shown on the plat. This is exclusively for use by the Arkansas Riverbed Authority and the Cherokee Nation of Oklahoma. Accuracy and acreages defined by the original survey documentation.

**Note:** See Exhibit "A" enlargement of the official Bureau of Land Management Plat attached.

Mark L. Bush (02/10/19)

LS #1385

# Exhibit "A"



**PARCEL 2**



### Parcel 3

A parcel of land in the south eastern quarter of section 30, situated easterly of lot 9, of township 15 north, range 20 east, Indian Meridian, Muskogee County, Oklahoma, and being more particularly described as follows:

**BEGINNING** at the 1896 meander corner of sections 30 and 31, upstream along said meander line;

**THENCE**, N. 21° 05'W., 373.56 feet,

**THENCE**, N. 35° 42'W., 419.76 feet to the 2003 right bank ordinary high-water mark,

**THENCE**, downstream along afore said mark, S. 46° 29'E., 260.70 feet,

**THENCE**, S. 29° 53'E., 421.08 feet,

**THENCE**, S. 16° 13'E., 151.14 feet to the angle point of sections 30 and 31,

**THENCE**, N. 89° 52'W., 61.38 feet along the section line back to the **POINT OF BEGINNING**, containing +/- 0.79 acres.

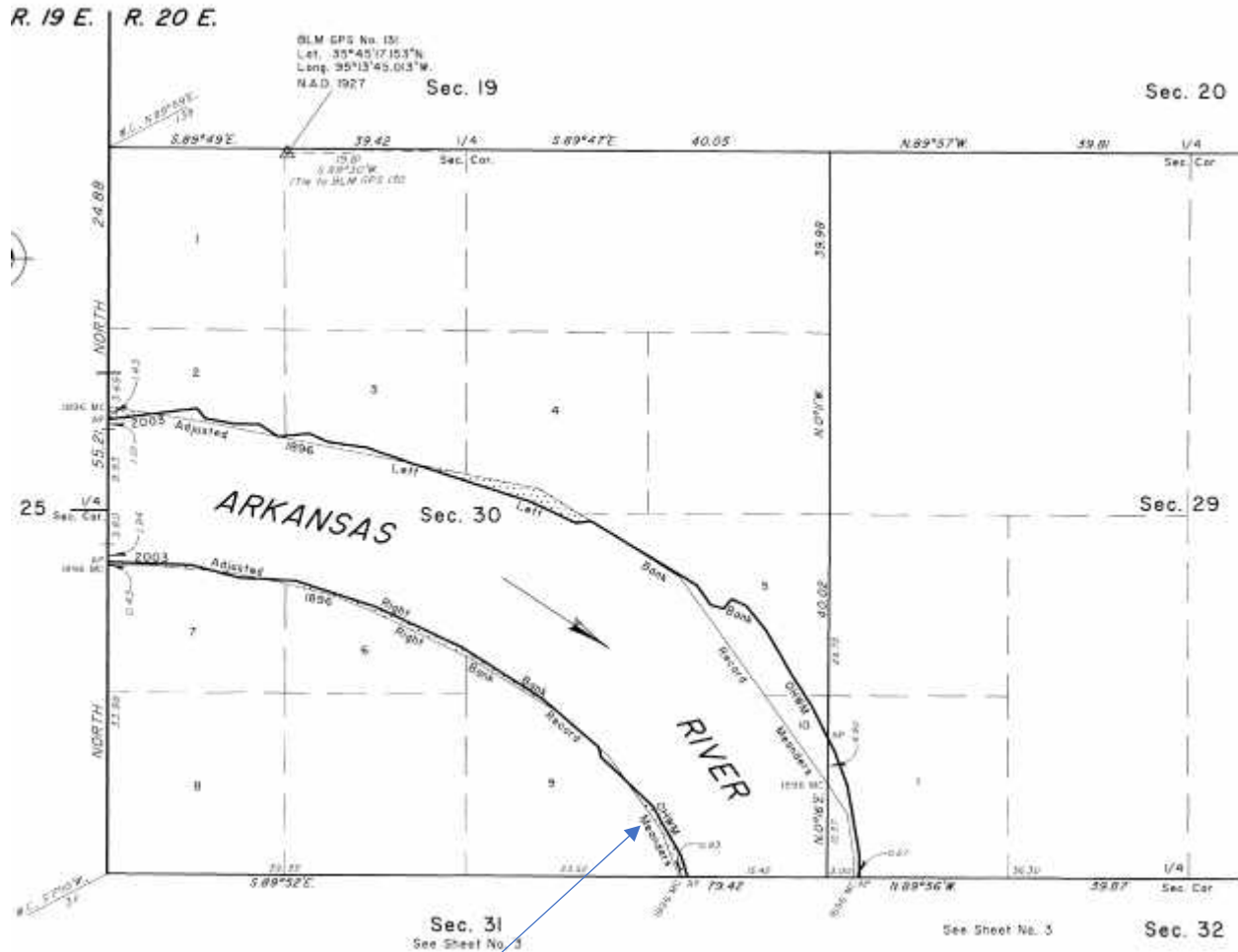
**BASIS OF BEARINGS:** As shown on the official BLM plat, approved September 28, 2012, referenced to the true meridian.

Meaning and intending to describe the parcel derived from the Official Bureau of Land Management plats and fieldnotes of the Dependent Resurvey and Survey of the Arkansas River Bed approved September 28, 2012. The purpose of this description is to delineate the upland claim areas from the full claim areas as shown on the plat. This is exclusively for use by the Arkansas Riverbed Authority and the Cherokee Nation of Oklahoma. Accuracy and acreages defined by the original survey documentation.

**Note:** See Exhibit "A" enlargement of the official Bureau of Land Management Plat attached.

Mark L. Bush (03/07/19)  
LS #1385

# Exhibit "A"



**PARCEL 3**

### Parcel 1

A parcel of land in the north eastern half of section 31, situated easterly of lot 1, of township 15 north, range 20 east, Indian Meridian, Muskogee County, Oklahoma, and being more particularly described as follows:

**BEGINNING** at the 1896 right bank meander corner of sections 30 and 31, downstream along said meander line,

**THENCE**, S. 17° 47' E., 420.42 feet,

**THENCE**, S. 05° 48' E., 411.84 feet to the 2003 right bank ordinary high-water mark,

**THENCE**, upstream along afore said mark, N. 01° 41' W., 480.48 feet,

**THENCE**, N. 16° 03' W., 343.20 feet to the angle point of sections 30 and 31,

**THENCE**, N. 89° 52' W., 61.38 feet along the section line to the **POINT OF BEGINNING**, containing +/- 0.62 acres.

**BASIS OF BEARINGS:** As shown on the official BLM plat, approved September 28, 2012, referenced to the true meridian.

Meaning and intending to describe the parcel derived from the Official Bureau of Land Management plats and fieldnotes of the Dependent Resurvey and Survey of the Arkansas River Bed approved September 28, 2012. The purpose of this description is to delineate the upland claim areas from the full claim areas as shown on the plat. This is exclusively for use by the Arkansas Riverbed Authority and the Cherokee Nation of Oklahoma. Accuracy and acreages defined by the original survey documentation.

**Note:** See Exhibit "A" enlargement of the official Bureau of Land Management Plat attached.

Mark L. Bush (03/07/19)

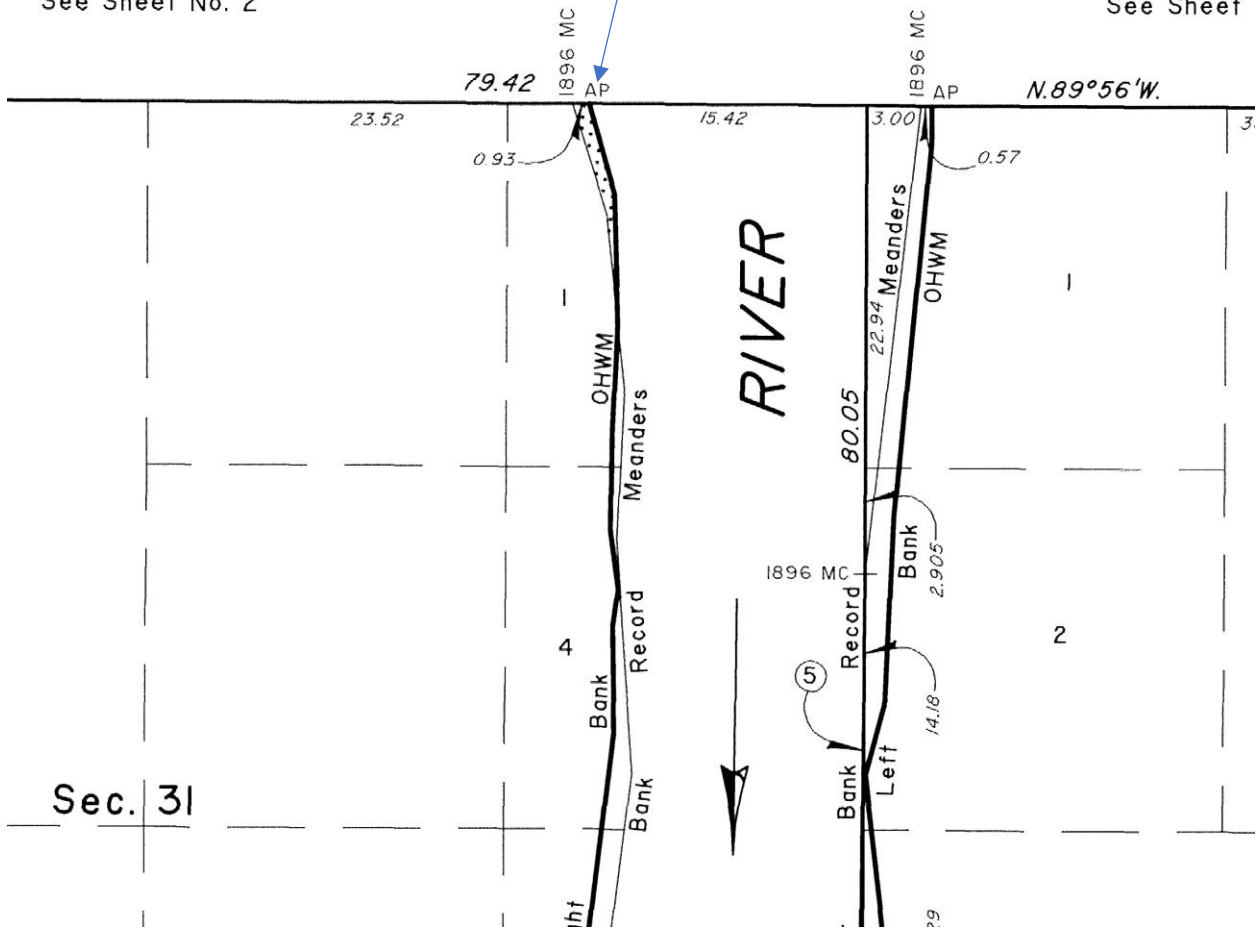
LS #1385

Exhibit "A"

PARCEL 1

Sec. 30  
See Sheet No. 2

See Sheet



Sec. 31

## Parcel 2

A parcel of land in the south eastern half of section 31, situated southernly of lots 10 and 11, of township 15 north, range 20 east, Indian Meridian, Muskogee County, Oklahoma, and being more particularly described as follows:

**BEGINNING** from the point for the 1896 right bank meander corner of sections 6 and 31, upstream along said meander line,

**THENCE**, N. 16° 12'E., 565.62 feet to the 2003 ordinary high-water mark,

**THENCE**, downstream along afore said mark, S. 03° 38' E., 121.44 feet,

**THENCE**, S. 21° 25'W., 453.42 feet to the **POINT OF BEGINNING**, containing +/- .27 acres.

**BASIS OF BEARINGS:** As shown on the official BLM plat, approved September 28, 2012, referenced to the true meridian.

Meaning and intending to describe the parcel derived from the Official Bureau of Land Management plats and fieldnotes of the Dependent Resurvey and Survey of the Arkansas River Bed approved September 28, 2012. The purpose of this description is to delineate the upland claim areas from the full claim areas as shown on the plat. This is exclusively for use by the Arkansas Riverbed Authority and the Cherokee Nation of Oklahoma. Accuracy and acreages defined by the original survey documentation.

**Note:** See Exhibit "A" enlargement of the official Bureau of Land Management Plat attached.

Mark L. Bush (07/07/19)

LS #1385

Exhibit "A"



PARCEL 2