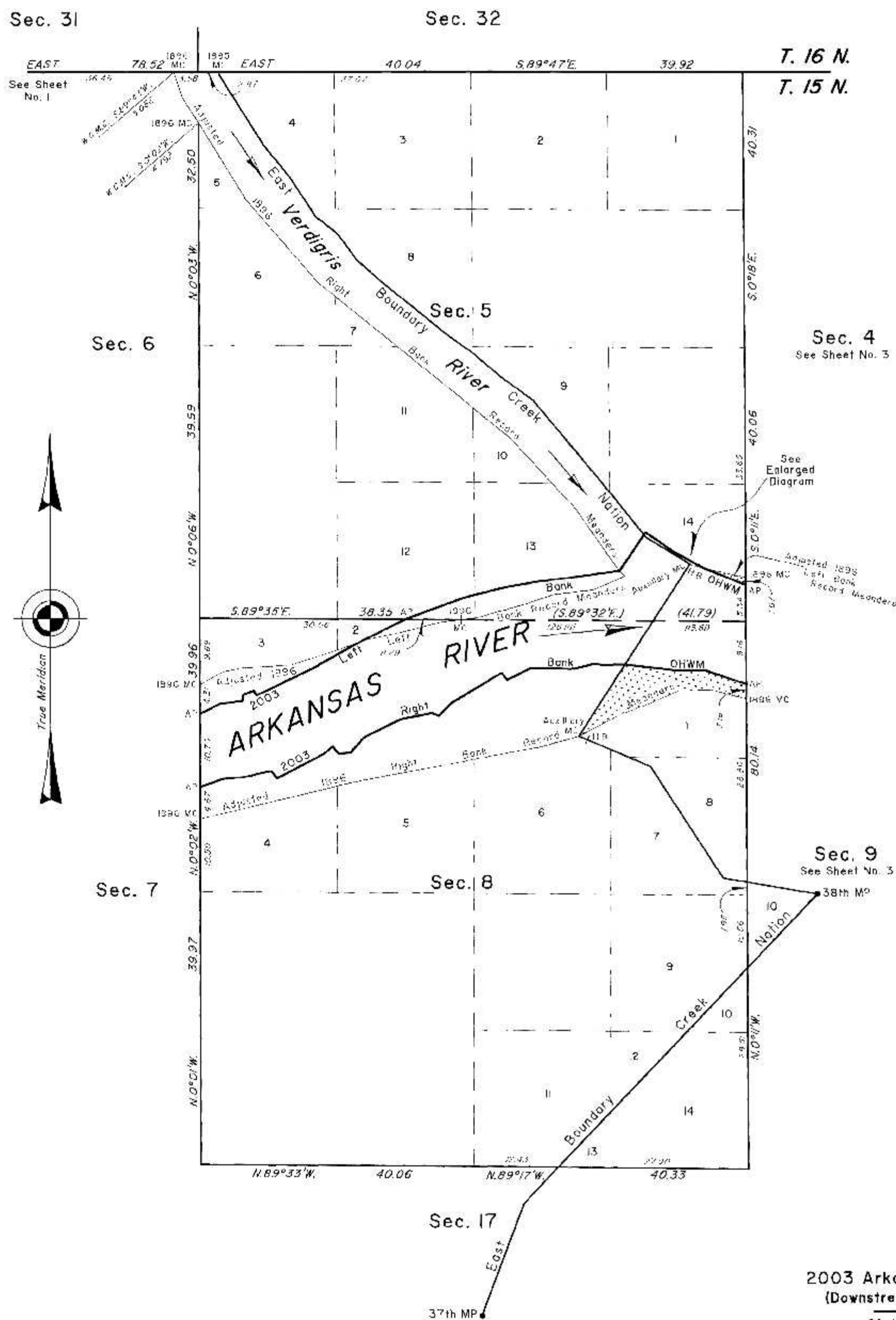


TOWNSHIP 15 NORTH, RANGE 19 EAST, OF THE INDIAN MERIDIAN, OKLAHOMA
DEPENDENT RESURVEY AND SURVEY



2003 Arkansas River in Sections 5 and 8 Left Bank OHWM as Digitized

From AP, sections 4 and 5, at 2003 Left Bank OHWM, thence upstream in section 5:

N.68°10'W.,	6.56
Adjusted 1896 Left Bank Record Meanders of Arkansas River	
N.61°39'W.,	4.97
N.55°21'W.,	5.17
S.33°50'W.,	0.41
East Boundary Creek Nation	
S.33°50'W.,	6.38
Adjusted 1896 Right Bank Record Meanders of Verdigris River	
S.61°55'W.,	6.31
S.83°53'W.,	5.70
S.79°36'W.,	5.27
S.75°54'W.,	5.96
S.70°06'W.,	9.23
AP sections 5 and 8	
S.63°18'W.,	7.65
Adjusted 1896 Left Bank Record Meanders of Arkansas River	
S.60°56'W.,	7.98
S.64°23'W.,	8.76
N.37°19'W.,	0.83
S.68°28'W.,	1.64
S. 8°22'W.,	0.93
S.84°25'W.,	3.22
S.63°12'W.,	3.33
AP sections 7 and 8	

2003 Arkansas River in Section 8 Right Bank OHWM as Digitized

From AP, sections 8 and 9, at 2003 Right Bank OHWM, thence upstream in section 8:

N.71°46'W.,	6.26
S.89°44'W.,	3.49
N.83°35'W.,	8.41
East Boundary Creek Nation	
S.89°24'W.,	3.48
N.81°21'W.,	1.14
S.75°16'W.,	2.88
N.89°12'W.,	6.48
S.62°57'W.,	3.83
N.38°06'W.,	1.34
S.59°04'W.,	8.48
S.45°37'W.,	2.70
N.70°48'W.,	1.12
S.78°59'W.,	4.62
S.64°18'W.,	5.95
S.42°09'W.,	3.10
S.84°51'W.,	1.71
N.39°58'W.,	1.43
S.47°10'W.,	1.65
S.62°56'W.,	7.80
N.40°47'W.,	.35
S.77°36'W.,	4.19
S.86°31'W.,	2.96
S.70°15'W.,	3.53
AP sections 7 and 8	

East Boundary of the Creek Nation

From 1895 M.C. sections 5 and 32, N. Bdy. of Tp., thence:

S.18°43'E.,	0.48
S.32°27'E.,	12.01
S.38°56'E.,	6.01
S.33°27'E.,	7.01
S.5°26'E.,	4.00
S.37°27'E.,	5.00
S.48°26'E.,	6.00
S.52°56'E.,	3.00
S.50°41'E.,	8.00
S.64°41'E.,	5.00
S.49°11'E.,	5.00
S.53°56'E.,	6.00
S.39°56'E.,	13.01
S.39°26'E.,	5.00
S.38°41'E.,	7.46
2003 Left Bank OHWM	
S.38°41'E.,	0.55
S.64°41'E.,	7.50
Auxiliary M.C., Adjusted 1896 Left Bank Record Meanders of Arkansas River, Historic Bank, Mouth of Verdigris River	
S.33°01'W.,	9.90
Intersect Secs 5 and 8	
S.33°01'W.,	7.62
2003 Right Bank OHWM	
S.33°01'W.,	12.46
Auxiliary M.C., Adjusted 1896 Right Bank Record Meanders of Arkansas River	
S.66°56'E.,	1.36
Historic Bank	
S.66°56'E.,	10.04
S.33°12'E.,	19.52
S.80°25'E.,	3.55
Intersect Secs. 8 and 9	
S.80°25'E.,	10.45
38th Mile Post:	
S.43°38'W.,	14.88
Intersect Secs. 8 and 9	
S.43°38'W.,	40.29
Intersect Secs. 8 and 17	
S.43°38'W.,	7.36
S.20°38'W.,	17.50
37th Mile Post	

Adjusted 1896 Left Bank Record Meanders Arkansas River

From the 1896 M.C. sections 4 and 5, thence:

N.77°20'W.,	6.24
2003 Left Bank OHWM	
N.77°20'W.,	1.72
N.58°44'W.,	0.50
Auxiliary M.C., Creek Nation and Cherokee Nation Boundary, Historic Bank, Mouth of Verdigris River	
S.67°20'W.,	5.23
S.60°50'W.,	3.96
S.63°04'W.,	6.97
Auxiliary M.C., Creek Nation and Cherokee Nation Boundary	
From the 1896 M.C. sections 7 and 8 thence:	
N.61°43'E.,	5.89
N.79°01'E.,	2.99
N.86°47'E.,	6.99
N.72°45'E.,	5.98
N.70°45'E.,	4.42
2003 Left Bank OHWM	
N.70°45'E.,	1.56
N.78°16'E.,	4.99
N.75°31'E.,	5.98
N.83°17'E.,	2.99
1896 MC Secs 5 and 8	
N.84°24'E.,	2.00
N.74°23'E.,	7.00
N.72°23'E.,	5.00
N.82°24'E.,	6.00
N.66°53'E.,	5.00
Mouth of Verdigris River	

Adjusted 1896 Right Bank Record Meanders Arkansas River

From the 1896 M.C. sections 8 and 9, thence:

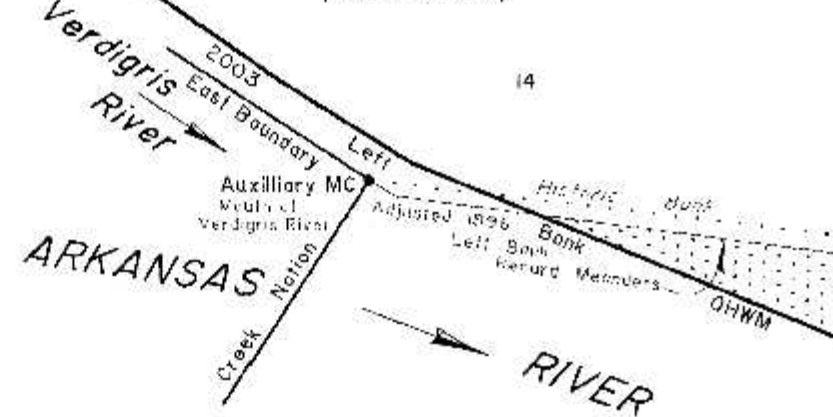
N.75°43'W.,	4.97
S.89°57'W.,	0.40
Historic Bank	
S.89°57'W.,	4.57
S.67°20'W.,	5.23
S.60°50'W.,	3.96
S.63°04'W.,	6.97
Auxiliary M.C., Creek Nation and Cherokee Nation Boundary	
From the 1896 M.C. sections 7 and 8 thence:	
S.74°25'W.,	5.60
S.79°24'W.,	28.05
S.76°39'W.,	23.23
1896 MC Secs 7 and 8	

Adjusted 1896 Right Bank Record Meanders Verdigris River

From the mouth of the Verdigris River, thence:

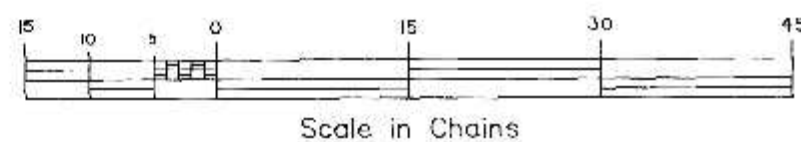
N.44°58'W.,	1.07
2003 Left Bank OHWM	
N.83°17'E.,	2.99
2003 Left Bank OHWM	
N.44°58'W.,	0.44
N.35°00'W.,	11.02
N.44°13'W.,	3.01
N.72°23'E.,	5.00
N.41°59'W.,	6.01
N.43°14'W.,	5.01
N.5°43'W.,	4.01
N.19°58'W.,	6.01
N.5°12'W.,	26.05
N.40°59'W.,	6.03
N.3°45'W.,	13.27
1896 MC Secs. 5 and 6	
N.33°07'W.,	4.43
N.18°36'W.,	3.91
1896 MC Secs. 6 and 31, N. Bdy. of Tp.	

ENLARGED DIAGRAM (Not to Scale)



2003 Arkansas Riverbed in Section 5 (Downstream of Creek Nation Boundary)
Claim Area ± 8.30 Acres
1896 Arkansas Riverbed Claim Area ± 0.33 Acres

2003 Arkansas Riverbed in Section 8 (Downstream of Creek Nation Boundary)
Claim Area ± 11.80 Acres
1896 Arkansas Riverbed Claim Area ± 8.94 Acres



1896 Riverbed Claim Area

Reference should be made to sheet No. 1 for survey and disclaimer information.

Bearings and distances depicted in parenthesis on certain lines represent calculated data.

UNITED STATES DEPARTMENT OF THE INTERIOR
BUREAU OF LAND MANAGEMENT

Sante Fe, New Mexico December 19, 2012

This plot is strictly conformable to the approved field notes, and the survey, having been correctly executed in accordance with the requirements of law and the regulations of this Bureau, is hereby accepted.

For the Director

John A. Casias

Chief Cadastral Surveyor for New Mexico