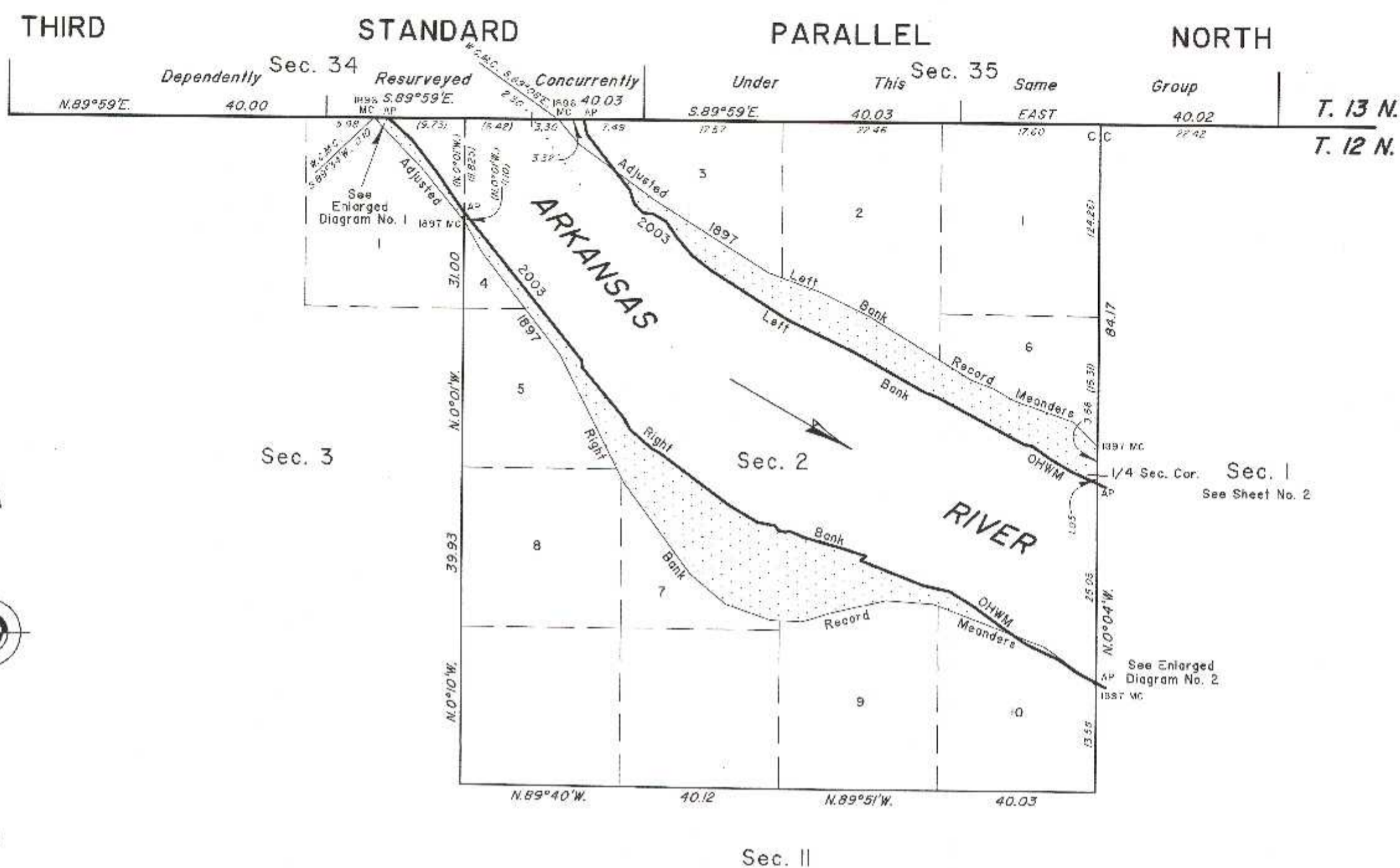


TOWNSHIP 12 NORTH, RANGE 20 EAST, OF THE INDIAN MERIDIAN, OKLAHOMA
DEPENDENT RESURVEY AND SURVEY



2003 Arkansas River in Section 2 Right Bank OHWM as Digitized

From AP, sections 1 and 2, at 2003 Right Bank OHWM, thence upstream in section 2:

N.62°37'W.	2.69
N.55°24'W.	2.87
N.64°41'W.	4.50
N.56°08'W.	1.96
Adj. 1897 R. B. Meanders	
N.56°08'W.	1.80
N.54°00'W.	4.32
N.58°39'W.	3.64
N.77°32'W.	3.50
N.69°02'W.	8.45
N.52°03'E.	0.90
N.72°17'W.	3.48
N.74°42'W.	4.73
N.65°52'W.	2.01
S.70°40'W.	0.54
N.74°42'W.	0.92
N.37°41'W.	0.82
N.81°05'W.	2.17
N.60°06'W.	4.20
N.53°22'W.	10.98
N.63°09'W.	1.09
N.49°27'W.	3.67
N.27°52'W.	1.62
N.40°14'W.	8.26
N. 8°27'W.	1.00
N.38°57'W.	23.75
AP sections 2 and 3 (Projected Line)	

2003 Arkansas River in Section 2 Left Bank OHWM as Digitized

From the 1897 MC, sections 1 and 2, at 2003 Left Bank OHWM, thence upstream in section 2:

N.65°50'W.	3.58
N.60°04'W.	3.00
N.54°46'W.	2.85
N.76°26'W.	1.17
N.6°56'W.	12.41
N.68°03'W.	1.80
N.60°58'W.	10.09
N.64°45'W.	9.40
N.57°48'W.	11.54
N.52°10'W.	2.99
N.40°44'W.	2.93
N.34°25'W.	2.57
N.60°37'W.	1.84
N.84°18'W.	1.29
N.44°21'W.	1.67
N.16°43'W.	1.68
N.38°23'W.	3.19
Adj. 1897 L. B. Meanders	
N.38°23'W.	5.74
N. 9°54'W.	1.87
AP sections 2 and 34	

Adjusted 1897 Right Bank Record Meanders

From the 1897 MC, sections 1 and 2 thence:	
N.54°25'W.	6.82
Historic Bank	
N.54°25'W.	1.20
N.69°23'W.	2.74
Historic Bank	
N.69°23'W.	1.45
2003 Right Bank OHWM	
N.69°23'W.	10.84
N.65°51'W.	6.01
S.77°10'W.	7.00
S.72°40'W.	4.00
N.87°51'W.	4.00
N.70°52'W.	6.01
N.49°55'W.	6.02
N.36°27'W.	11.04
N.26°59'W.	18.05
N.37°57'W.	16.04
N.30°14'W.	4.65
1897 MC Secs. 2 and 3	
N.39°09'W.	5.40
Historic Bank	
N.39°09'W.	2.62
N.43°54'W.	4.06
Historic Bank	
N.43°54'W.	5.26
1896 MC Secs. 3 and 34	

Adjusted 1897 Left Bank Record Meanders

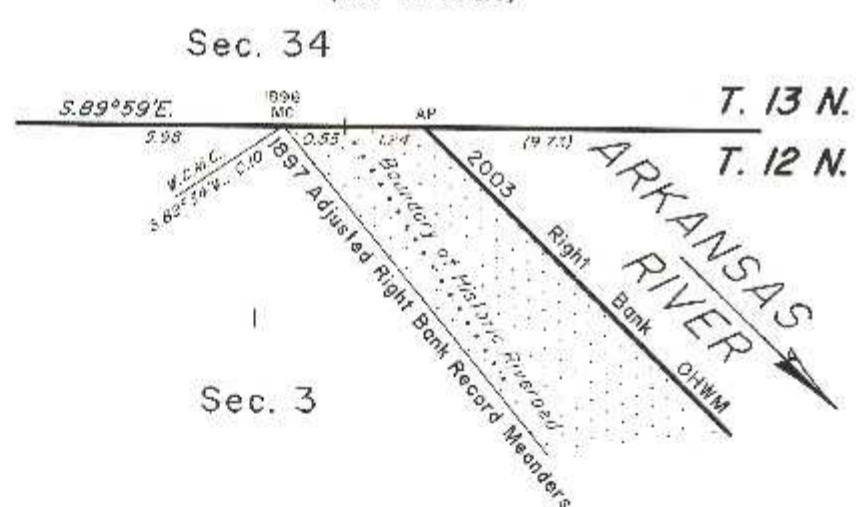
From the true point for the 1896 MC, sections 2 and 34 thence:	
S.41°02'E.	4.00
S.54°01'E.	5.66
2003 Left Bank OHWM	
S.54°01'E.	6.35
S.58°01'E.	17.01
S.70°01'E.	7.01
S.64°01'E.	7.00
S.58°31'E.	15.01
S.70°01'E.	3.00
S.60°01'E.	3.00
S.70°31'E.	8.01
S.45°32'E.	4.30
1897 MC Secs. 1 and 2	

2003 Arkansas River in Section 3 Right Bank OHWM as Digitized

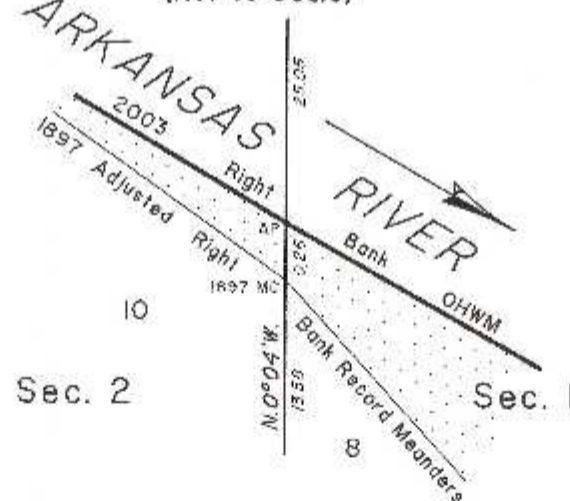
From AP, sections 2 and 3, at 2003 Right Bank OHWM, thence upstream in section 3:

N.38°57'W.	0.35
N.34°21'W.	5.48
N.38°14'W.	5.53
N.48°07'W.	4.03
AP sections 3 and 34	

ENLARGED DIAGRAM No. 1 (Not to Scale)

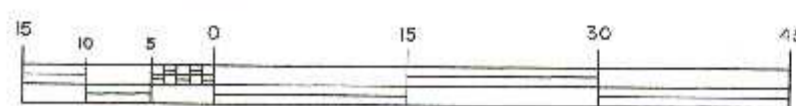


ENLARGED DIAGRAM No. 2 (Not to Scale)



2003 Arkansas Riverbed in Section 2	2003 Arkansas Riverbed in Section 3
Claim Area ±203.08 Acres	Claim Area ±5.19 Acres
1897 Arkansas Riverbed Claim Area ±71.10 Acres	1897 Arkansas Riverbed Claim Area ±1.94 Acres

1897 Riverbed Claim Area



Scale in Chains

Reference should be made to sheet No. 1 for survey and disclaimer information.

UNITED STATES DEPARTMENT OF THE INTERIOR
BUREAU OF LAND MANAGEMENT

Sante Fe, New Mexico September 30, 2011

This plat is strictly conformable to the approved field notes, and the survey, having been correctly executed in accordance with the requirements of law and the regulations of this Bureau, is hereby accepted.

For the Director

John A. Casada

Chief Cadastral Surveyor for New Mexico