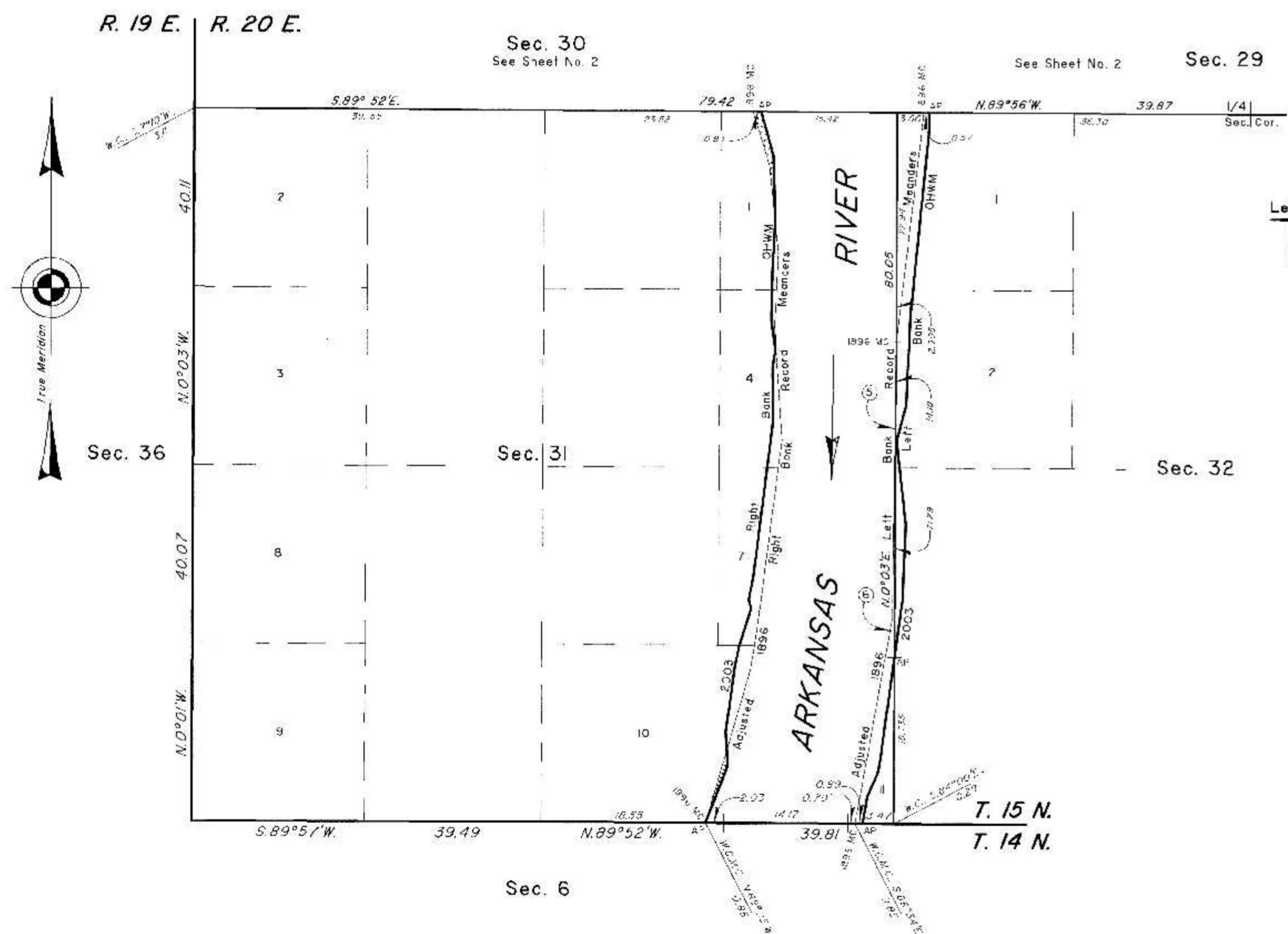


TOWNSHIP 15 NORTH, RANGE 20 EAST, OF THE INDIAN MERIDIAN, OKLAHOMA

DEPENDENT RESURVEY AND SURVEY



**2003 Arkansas River in Sections 31 and 32 Left Bank OHWM as Digitized**

From AP, sections 6 and 31, at 2003 Left Bank OHWM, thence upstream in section 31;

N.8°40'E.,	3.05
N.24°08'E.,	3.18
N.7°41'E.,	12.93
AP Sections 31 and 32	N.7°41'E., 6.55
	N.2°16'E., 8.47
	N.6°35'W., 9.42
	N.14°48'E., 3.98
	N.2°45'E., 0.47
	N.5°33'E., 20.73
	N.0°39'W., 2.06

AP Sections 29 and 32

**2003 Arkansas River in Section 31 Right Bank OHWM as Digitized**

From AP, sections 6 and 31, at 2003 Right Bank OHWM, thence upstream in section 31;

N.2°25'E.,	6.87
N.3°38'W.,	1.84
Adj. 1896 R.B. Meander	N.3°38'W., 2.02
	N.7°45'E., 7.39
	N.11°18'E., 7.27
	N.17°22'E., 4.50
	N.14°34'W., 1.09
	N.11°18'E., 2.61
	N.7°03'E., 17.70
	N.0°47'W., 5.96
	N.8°09'E., 1.99
	N.8°11'W., 3.35
	N.1°00'E., 5.35
	N.2°48'E., 5.91
Adj. 1896 R.B. Meander	N.1°41'W., 7.28
	N.16°03'W., 5.20

AP Sections 30 and 31

**Adjusted 1896 Left Bank Record Meanders**

From the 1896 MC, sections 6 and 31, S. Bdy. of Tp., thence;

N.10°05'E.,	3.36
Historic Bank	N.10°05'E., 5.20
Historic Bank	N.10°05'E., 3.71
Historic Bank	N.0°05'E., 3.97
Historic Bank	N.10°05'L., 7.19
	N.0°35'E., 51.3
1896 MC Secs. 31 and 32	N.6°41'E., 8.54
Historic Bank	N.6°41'E., 14.65
Historic Bank	N.6°41'E., 2.80

1896 MC Secs. 29 and 32

**Adjusted 1896 Right Bank Record Meanders**

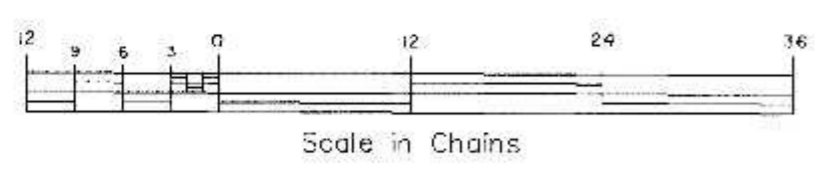
From the 1896 MC, sections 6 and 31, S. Bdy. of Tp., thence;

N.15°12'E.,	8.57
2003 Right Bank OHWM	N.16°12'L., 9.41
Historic Bank	N.8°42'E., 2.26
Historic Bank	N.8°42'E., 5.74
Historic Bank	N.7°12'E., 20.00
Historic Bank	N.3°48'W., 0.64
Historic Bank	N.3°48'W., 12.37
Historic Bank	N.2°42'E., 8.00
Historic Bank	N.5°48'W., 3.77
2003 Right Bank OHWM	N.5°48'W., 6.24
Historic Bank	N.17°47'W., 6.37

1896 MC Secs. 30 and 31

2003 Arkansas Riverbed in Section 31 Claim Area ± 122.98 Acres	2003 Arkansas Riverbed in Section 32 Claim Area ± 9.55 Acres
1896 Arkansas Riverbed Claim Area ± 0.89 Acres	

 1896 Riverbed Claim Area



Reference should be made to sheet No. 1 for survey and disclaimer information.

UNITED STATES DEPARTMENT OF THE INTERIOR  
BUREAU OF LAND MANAGEMENT

Sante Fe, New Mexico September 28, 2012

This plat is strictly conformable to the approved field notes, and the survey, having been correctly executed in accordance with the requirements of law and the regulations of this Bureau, is hereby accepted.

For the Director



Chief Cadastral Surveyor for New Mexico