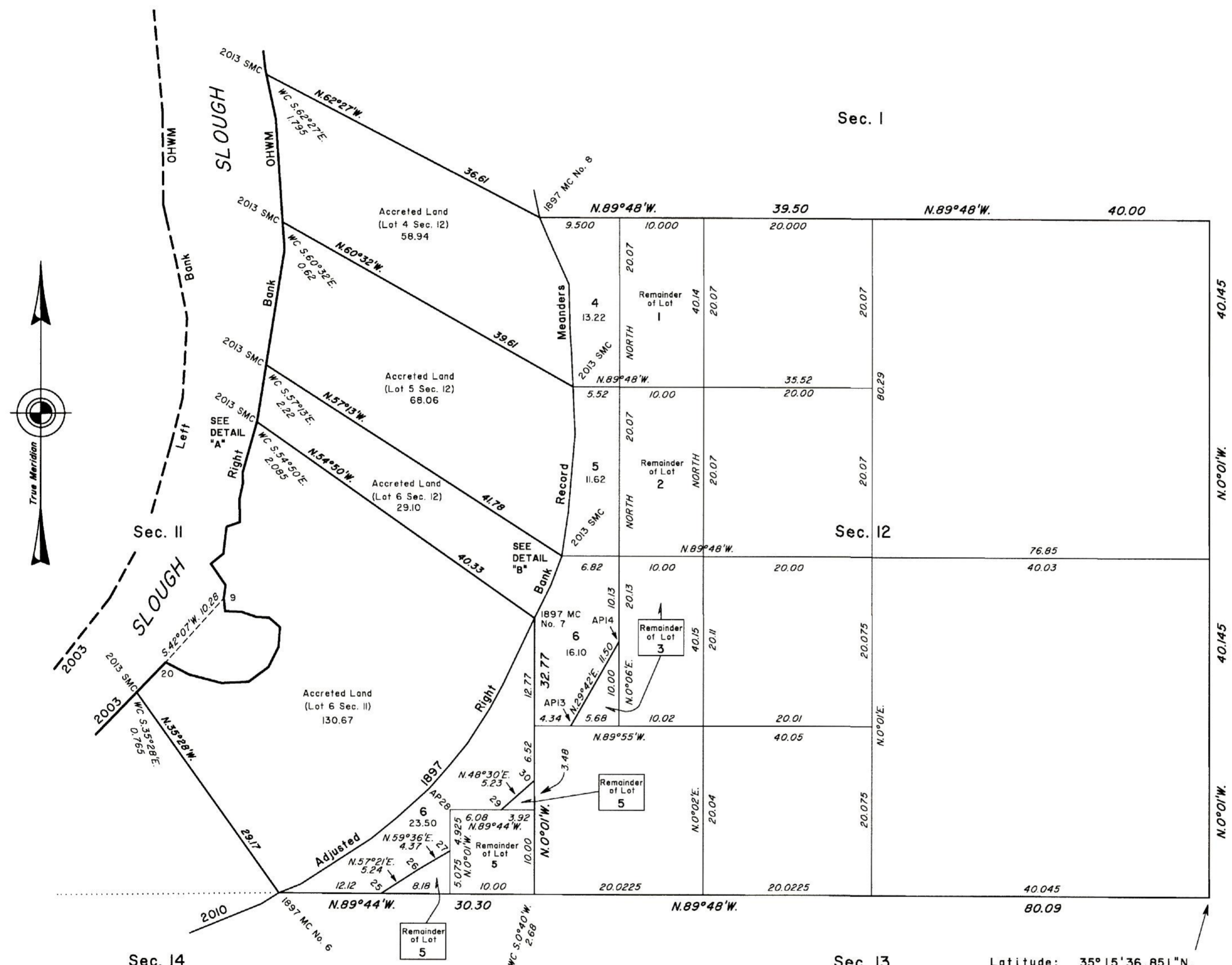


TOWNSHIP 9 NORTH, RANGE 25 EAST, OF THE INDIAN MERIDIAN, OKLAHOMA  
DEPENDENT RESURVEY AND SURVEY



2003 Arkansas River Slough Right Bank Ordinary High Water Mark

Thence along Right Bank of Slough:

2013 SMC	S.12°03'E.	5.42
	S. 3°50'E.	12.25
2013 SMC	S. 3°50'E.	3.29
	S. 8°59'W.	13.82
2013 SMC	S. 8°59'W.	6.75
	S.15°40'W.	0.10
2013 SMC	S.15°40'W.	6.26
	S. 0°56'E.	1.28
	S.12°18'W.	1.86
	S. 0°56'E.	2.77
	S.70°37'W.	1.68
	S. 6°39'W.	3.22
	S.50°54'W.	1.90
	S.34°38'E.	3.07
	S. 7°28'W.	1.56
9	S. 5°26'E.	1.55
	S.87°46'E.	1.92
2013 SMC	S.71°30'E.	1.92
	S.86°51'E.	1.50
	S.48°26'E.	1.73
	S. 4°37'W.	2.36
	S.26°34'W.	2.64
	S.53°35'W.	2.93
	S.87°02'W.	3.20
	N.75°25'W.	3.98
	N.62°38'W.	3.15
20	S.44°03'W.	4.95

2010 Adjusted 1897 Right Bank Record Meanders

1897 MC, Sections II and I4, thence section II:

	N.68°09'E.	2.79
	N.57°07'E.	9.97
	N.50°51'E.	3.79
	N.47°51'E.	5.28
	N.41°04'E.	3.59
	N.39°19'E.	3.39
	N.32°47'E.	4.98
	N.28°31'E.	3.29
	N.25°16'E.	8.67

1897 MC No. 7, Sections II and I2, thence section I2:

	N.26°33'E.	4.39
	N.20°26'E.	3.66
	N. 8°21'E.	0.015
2013 SMC	N. 8°21'E.	5.245
	N. 4°53'E.	9.28
2013 SMC	N. 2°33'W.	5.635
	N. 2°33'W.	4.405
	N. 3°48'W.	2.61
	N. 1°19'W.	5.13
	N.24°05'W.	6.05
	N.22°34'W.	2.63

1897 MC No. 8, Sections I and I2

Inverse between 9 and 20 used for partition line calculations; S.42°07'W. 10.28

Reference should be made to Sheet No. 1 for survey information.

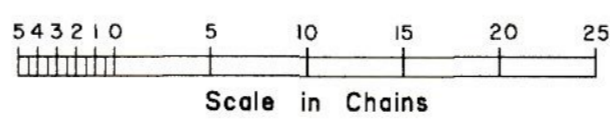
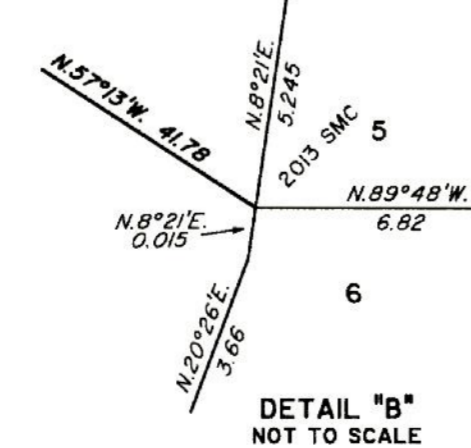
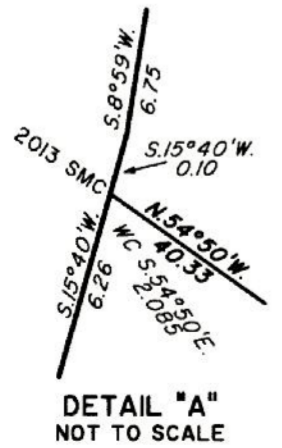
UNITED STATES DEPARTMENT OF THE INTERIOR  
BUREAU OF LAND MANAGEMENT

Santa Fe, New Mexico April 15, 2015

This plat is strictly conformable to the approved field notes, and the survey, having been correctly executed in accordance with the requirements of law and the regulations of this Bureau, is hereby accepted.

For the Director

Acting Chief Cadastral Surveyor for New Mexico



Latitude: 35°15'36.851"N.  
Longitude: 94°36'07.543"W.  
NAD 83 (2011)