

TOWNSHIP 9 NORTH, RANGE 25 EAST, OF THE INDIAN MERIDIAN, OKLAHOMA
DEPENDENT RESURVEY AND SURVEY

T. 10 N., R. 25 E.
Sec. 35

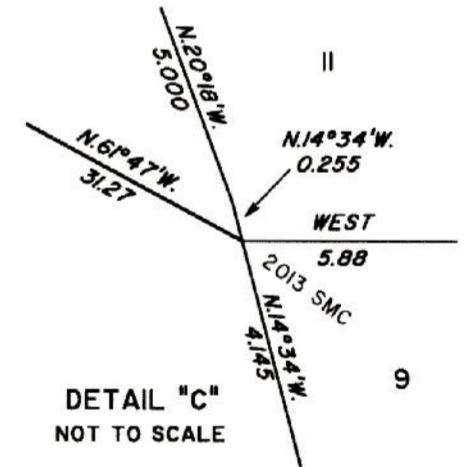
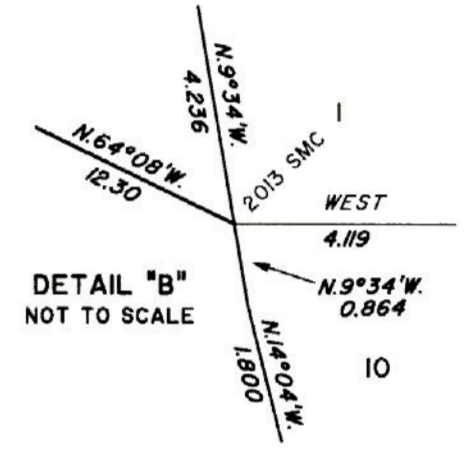
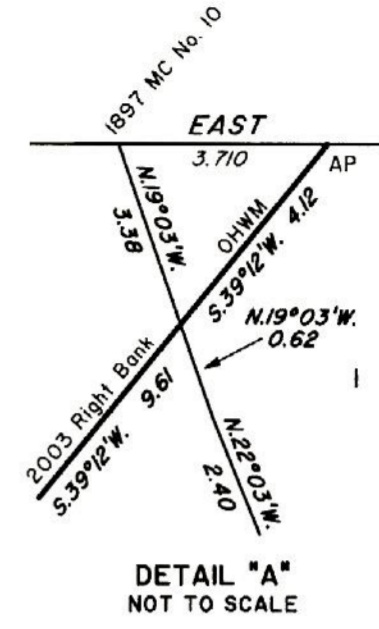
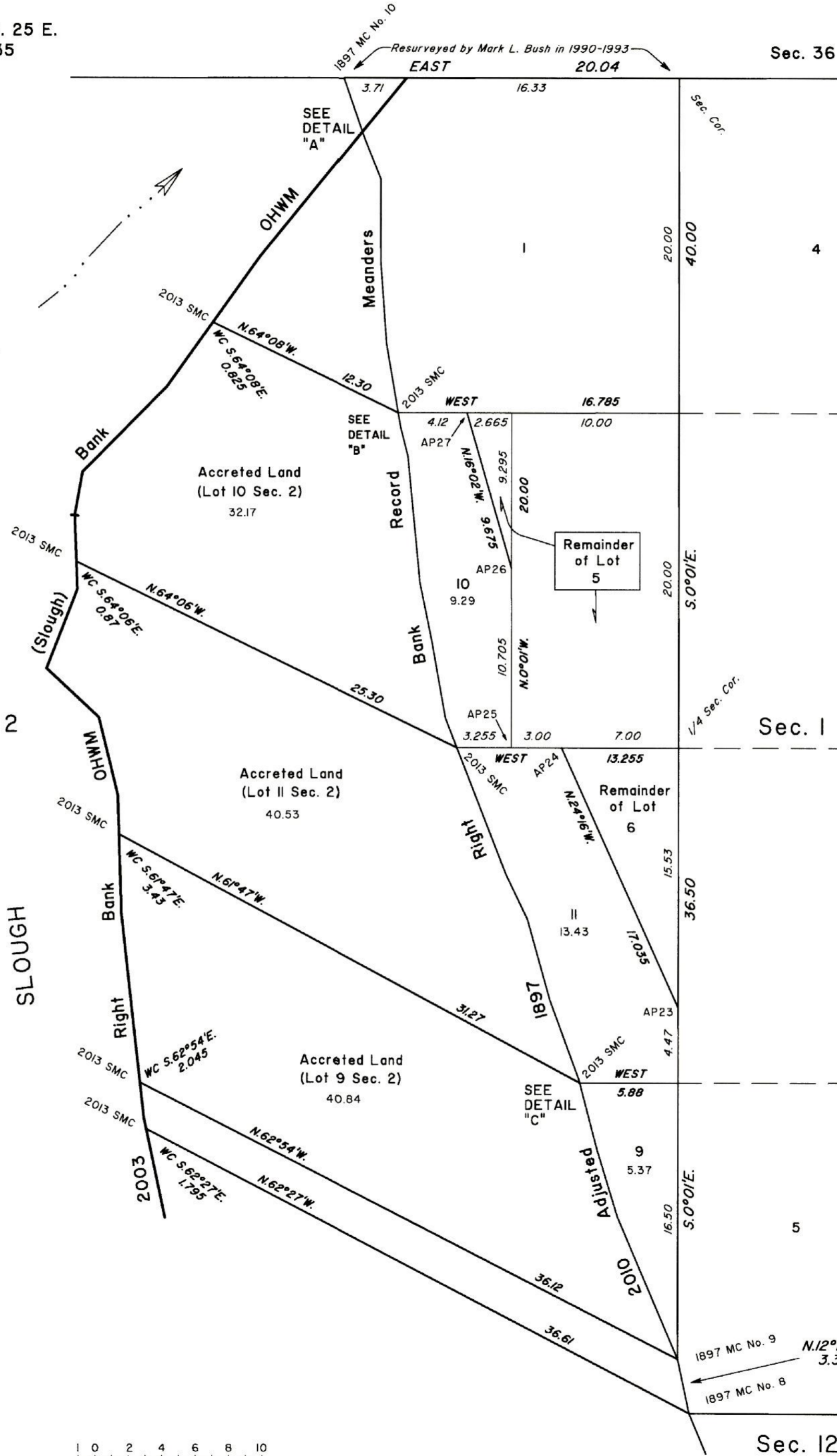
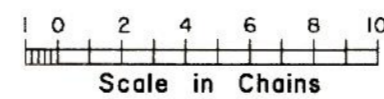
Sec. 36

2003 Arkansas River Right Bank
Ordinary High Water Mark

- From AP, sections 2 and 35, at the 2003 Right Bank OHWM, thence upstream in section 2, through section II;
- S.39°12'W., 4.12
 - Point of intersection with the 2010 Adj. 1897 Right Bank Record Meanders
 - S.39°12'W., 9.61
 - 2013 SMC S.35°34'W., 4.87
 - S.35°34'W., 4.72
 - S.44°39'W., 7.17
 - S.10°12'W., 2.65
 - Slough, continue on 2003 OHWM along Right Bank of Slough
 - 2013 SMC S. 2°13'E., 2.77
 - S. 2°13'E., 1.65
 - S.21°18'W., 0.81
 - Point of intersection with the 2010 Adj. 1897 Left Bank Record Meanders
 - S.21°18'W., 4.25
 - S.46°57'E., 4.29
 - S.13°45'E., 4.81
 - 2013 SMC S. 1°49'E., 2.305
 - S. 1°49'E., 4.725
 - S. 6°24'E., 6.39
 - Point of intersection with the 2010 Adj. 1897 Left Bank Record Meanders
 - S. 6°24'E., 3.78
 - S. 6°24'E., 2.14
 - 2013 SMC S.12°03'E., 0.66

2010 Adjusted 1897 Right Bank
Record Meanders

- 1897 MC No. 8, Sections I and 12, thence section I;
- N.12°24'W., 3.30
- 1897 MC No. 9, Sections I and 2, thence section 2;
- N.23°03'W., 9.21
 - N.17°04'W., 4.20
 - 2013 SMC N.14°34'W., 4.145
 - N.14°34'W., 0.255
 - N.20°18'W., 5.00
 - N.15°34'W., 5.00
 - N.25°33'W., 3.00
 - 2013 SMC N.21°18'W., 8.095
 - N.21°18'W., 1.915
 - N.10°04'W., 4.60
 - N.11°34'W., 3.60
 - N. 5°34'W., 7.60
 - N.14°04'W., 1.80
 - 2013 SMC N. 9°34'W., 0.865
 - N. 9°34'W., 4.235
 - N. 4°04'W., 4.90
 - N. 0°04'W., 4.90
 - N.22°03'W., 2.40
 - N.19°03'W., 0.62
 - Point of intersection with the 2003 Right Bank OHWM;
 - N.19°03'W., 3.38
- 1897 MC No. 10, sections 2 and 35



Reference should be made to Sheet No. 1 for survey information.

UNITED STATES DEPARTMENT OF THE INTERIOR
BUREAU OF LAND MANAGEMENT

Santa Fe, New Mexico April 15, 2015

This plat is strictly conformable to the approved field notes, and the survey, having been correctly executed in accordance with the requirements of law and the regulations of this Bureau, is hereby accepted.

For the Director
Robert A. Cannon

Acting Chief Cadastral Surveyor for New Mexico