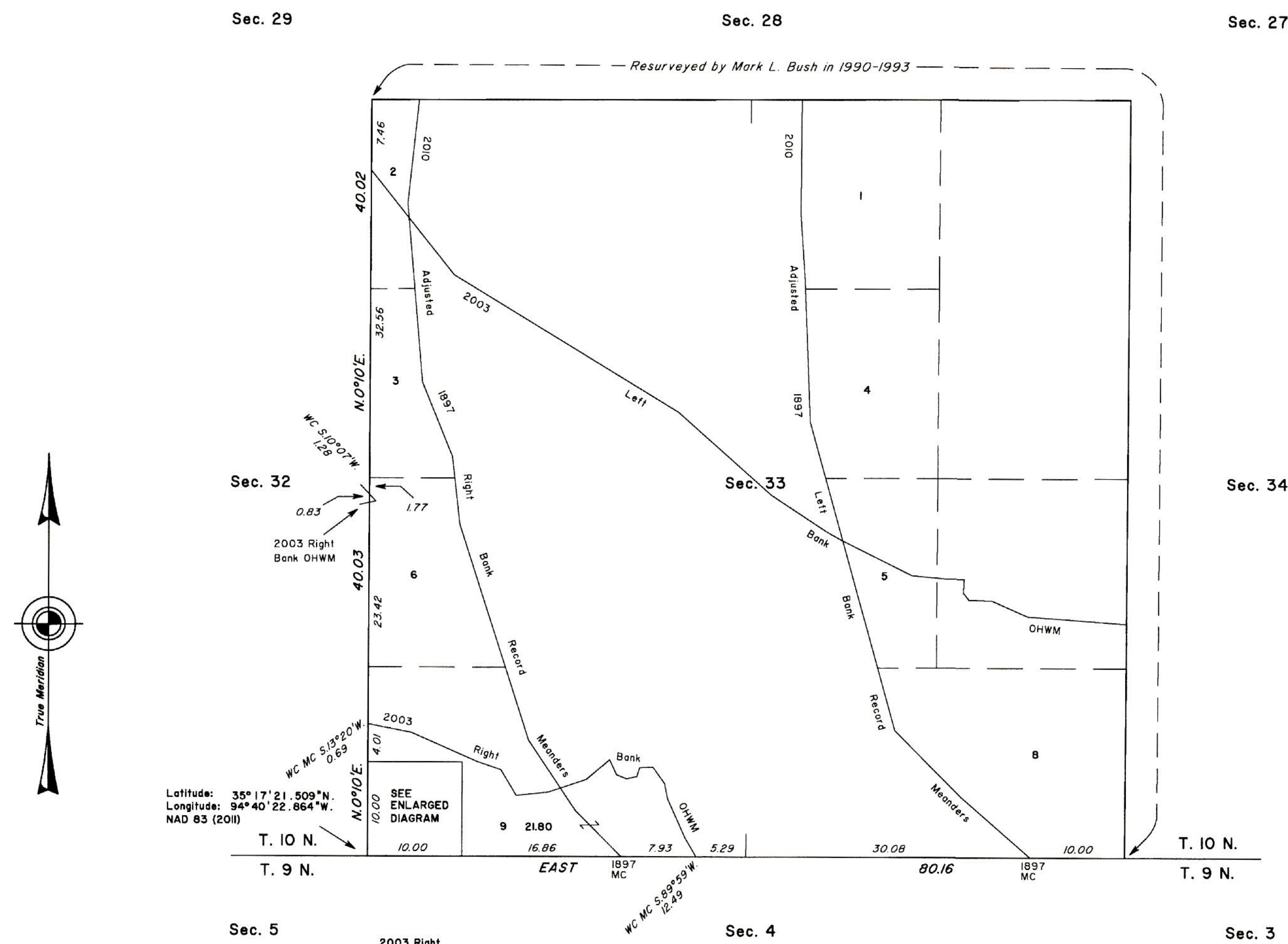
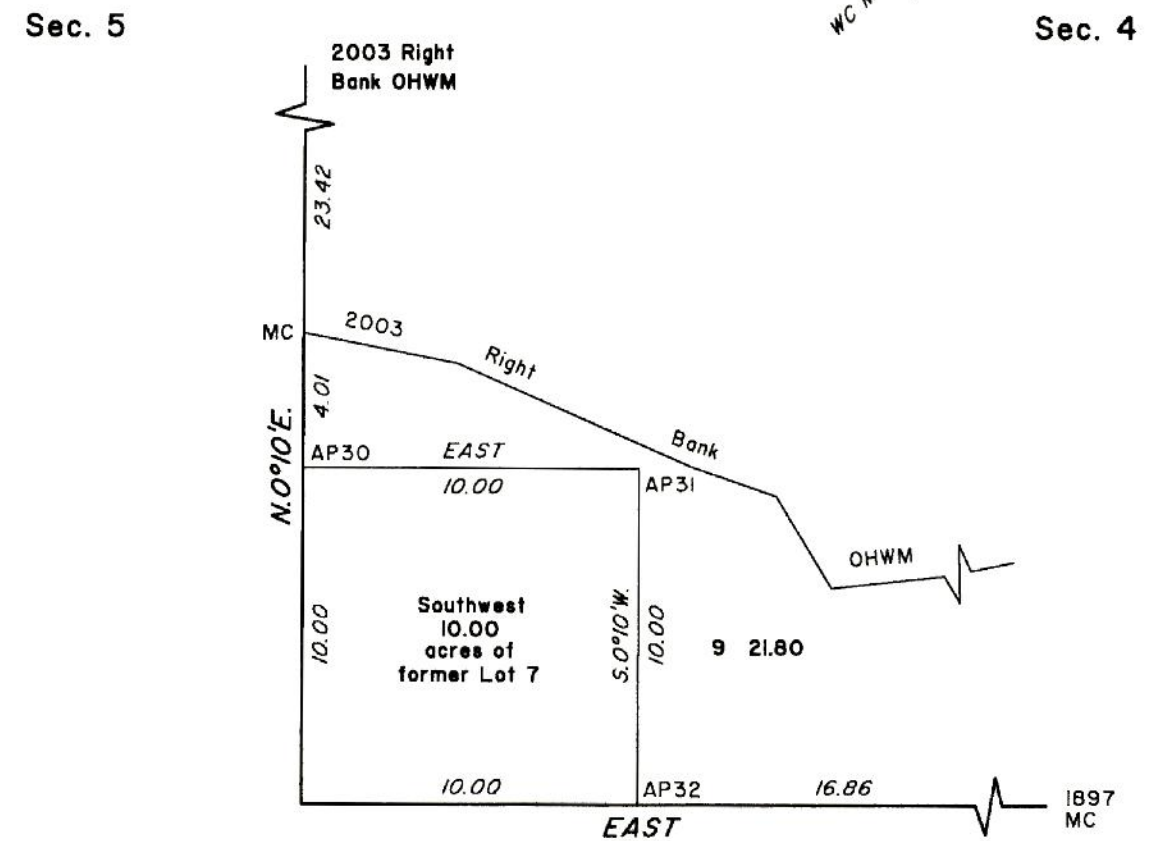


TOWNSHIP 10 NORTH, RANGE 25 EAST, OF THE INDIAN MERIDIAN, OKLAHOMA
DEPENDENT RESURVEY AND SURVEY



Latitude: 35° 17' 21.509" N.
Longitude: 94° 40' 22.864" W.
NAD 83 (2011)

SEE ENLARGED DIAGRAM

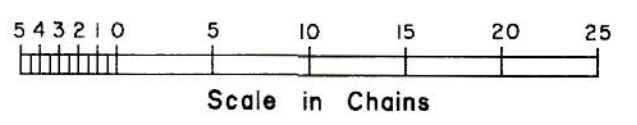


2003 Arkansas River Right Bank Ordinary High Water Mark (OHWM)

From the meander corner on the 2003 right bank OHWM, on the section line between sections 4 and 33, on the 2003 Right Bank OHWM, thence upstream in section 33:

N.30°02'W.,	2.36	S.49°46'W.,	3.26
N.24°13'W.,	4.49	S.7°40'W.,	2.85
N.11°33'W.,	1.66	Point of intersection with the 2010 Adjusted 1897 Right Bank Record Meanders	
N.35°44'W.,	2.14	S.7°40'W.,	1.39
S.86°53'W.,	1.40	S.83°54'W.,	3.38
S.16°15'W.,	0.98	N.3°10'W.,	3.18
S.78°15'W.,	1.12	N.7°05'W.,	2.69
N.68°33'W.,	1.14	N.66°16'W.,	7.58
N.24°50'W.,	1.75	N.78°56'W.,	4.66

Meander corner on the 2003 right bank OHWM, on the section line between sections 32 and 33.



A history of surveys and additional information are contained in the field notes.

This plat represents the dependent resurvey of a portion of the south boundary, a portion of the subdivisional lines, and a portion of the informative traverse of the digitized 2003 right bank ordinary high water mark of the Arkansas River, designed to restore the corners in their true original locations according to the best available evidence, and a metes-and-bounds survey in Section 33, Township 10 North, Range 25 East, Indian Meridian, Oklahoma.

Except as indicated hereon, the lottings and areas are as shown on the plats approved November 2, 1898.

Survey executed by Nathaniel J. Belson, Cadastral Surveyor, beginning June 3, 2013 and completed November 20, 2013, pursuant to Special Instructions dated and approved May 23, 2013, for Group No. 221, Oklahoma.

UNITED STATES DEPARTMENT OF THE INTERIOR
BUREAU OF LAND MANAGEMENT

Santa Fe, New Mexico April 2, 2015

This plat is strictly conformable to the approved field notes, and the survey, having been correctly executed in accordance with the requirements of law and the regulations of this Bureau, is hereby accepted.

For the Director

Acting Chief Cadastral Surveyor for New Mexico